



Automotive
Energy & Power Analysis
Aerospace & Defense
Transportation
General Test & Measurement

DEWE-901

Technical reference manual



Test & Measurement Solutions



Copyright © DEWETRON elektronische Messgeraete Ges.m.b.H.

This document contains information which is protected by copyright. All rights are reserved. Reproduction, adaptation, or translation without prior written permission is prohibited, except as allowed under the copyright laws.

All trademarks and registered trademarks are acknowledged to be the property of their owners.
DEWESoft™ is a trademark of Dewesoft d.o.o

Thank you!

Thank you very much for your investment in DEWETRON's unique data acquisition systems. These are top-quality instruments which are designed to provide you years of reliable service. This guide has been prepared to help you get the most from your investment, starting from the day you take it out of the box, and extending for years into the future.

This guide includes important startup notes, as well as safety notes and information about keeping your DEWETRON system in good working condition over time.

We strongly suggest that you read this entire manual, especially the safety and care sections, as well as to avoid damaging your DEWETRON system.

What is the DEWE-901?

This product is used for measuring of different physical and/or electrical sizes (depending on model or configuration). The connection is depending on model or configuration and takes place via safety banana plugs, BNC connectors ($\pm 50V$ max.), D-SUB connectors ($\pm 50V$ max.), thermocouple connectors ($\pm 50V$ max.), BINDER® connectors ($\pm 50V$ max.), SMB connectors ($\pm 50V$ max.), μ dot connectors ($\pm 50V$ max.), LEMO® connectors or RJ-45 connectors.

Preface

Notes

Content

General Information, Safety Instructions	7
Training	7
Calibration.....	7
Support	7
Service/repairs	7
Warranty Information	8
Printing History.....	8
Safety conventions	9
General safety and hazard warnings for all DEWETRON systems	10
Maintenance.....	13
Windows updates and antivirus/security software	14
Problematic network stacks	14
Environmental Considerations	14
Blockdiagram of the internal signal processing	15
First steps	16
Main System	17
DEWE-901 PC instrument	17
System specifications	17
Cleaning the filter pad.....	18
Connectors	18
Trouble shooting	23
A/D Conversion	A1
Internal Wiring	B1
CE-Certificate of conformity	C1

Table of content

Training

DEWETRON offers training at various offices around the world several times each year. DEWETRON headquarters in Austria have a very large and professional conference and seminar center, where training classes are conducted on a regular basis starting with sensors and signal conditioning, A/D technology and software operation. For more information about training services, please visit:
<http://www.dewetron.com/support/training>

Dewetron Inc. in the USA also has a dedicated training facility connected to its headquarters, located in Rhode Island. For more information about training services in the US, please visit:
<http://www.dewamerica.com/support/trainingsclasses>

Calibration

Every instrument needs to be calibrated at regular intervals. The standard norm across nearly every industry is annual calibration. Before your DEWETRON data acquisition system is delivered, it is calibrated at our DEWETRON headquarter. Each of this system is delivered with a certificate of compliance with our published specifications. Detailed calibration reports from our calibration system are available for purchase with each order. We retain them for at least one year, so calibration reports can be purchased for up to one year after your system was delivered.

Support

DEWETRON has a team of people ready to assist you if you have any questions or any technical difficulties regarding the system. For any support please contact your local distributor first or DEWETRON directly.

For Asia and Europe, please contact:

DEWETRON Ges.m.b.H.
Parkring 4
A-8074 Graz-Grambach
AUSTRIA
Tel.: +43 316 3070
Fax: +43 316 307090
Email: support@dewetron.com
Web: <http://www.dewetron.com>

The telephone hotline is available
Monday to Friday between
08:00 and 17:00 CET (GMT +1:00)

For the Americas, please contact:

DEWETRON, Inc.
10 High Street, Suite K
Wakefield, RI 02879
U.S.A.
Tel.: +1 401 284 3750
Toll-free: +1 877 431 5166
Fax: +1 401 284 3755
Email: support@dewamerica.com
Web: <http://www.dewamerica.com>

The telephone hotline is available
Monday to Friday between
08:00 and 17:00 GST (GMT -5:00)

Service/repairs

Only the team of DEWETRON is allowed to perform any kinds of repairs to your system to assure a safe and proper operation in future. For information regarding service and repairs please contact your local distributor first or DEWETRON directly.



Any spare parts (screws, backplanes, cables,...) must be obtained from DEWETRON only.

Notice

The information contained in this document is subject to change without notice.

DEWETRON elektronische Messgeraete Ges.m.b.H. (DEWETRON) shall not be liable for any errors contained in this document. DEWETRON MAKES NO WARRANTIES OF ANY KIND WITH REGARD TO THIS DOCUMENT, WHETHER EXPRESS OR IMPLIED. DEWETRON SPECIFICALLY DISCLAIMS THE IMPLIED WARRANTIES OF MERCHANTABILITY AND FITNESS FOR A PARTICULAR PURPOSE. DEWETRON shall not be liable for any direct, indirect, special, incidental, or consequential damages, whether based on contract, tort, or any other legal theory, in connection with the furnishing of this document or the use of the information in this document.

Warranty Information

A copy of the specific warranty terms applicable to your DEWETRON product and replacement parts can be obtained from your local sales and service office.

Restricted Rights Legend

Use austrian law for duplication or disclosure.

DEWETRON GesmbH
Parkring 4
A-8074 Graz-Grambach / Austria

TRION™ is a trademark of DEWETRON Ges.m.b.H.

SYNC-CLOCK™ is a trademark of DEWETRON Ges.m.b.H.

SUPER-COUNTER™ is a trademark of DEWETRON Ges.m.b.H.

DEWESoft™ is a trademark of DEWESoft d.o.o.

Any other trademarks and registered trademarks are acknowledged to be the property of their owners.

Printing History

Please refer to the page bottom for printing version.

Copyright © DEWETRON elektronische Messgeraete Ges.m.b.H.

This document contains information which is protected by copyright. All rights are reserved. Reproduction, adaptation, or translation without prior written permission is prohibited, except as allowed under the copyright laws.

Safety conventions

Safety conventions



Observe precautions for handling electrostatic sensitive devices!



This icon denotes a caution, which advises you of precautions to take to avoid injury, data loss, or a system crash. When this symbol is marked on the product, refer to the technical reference manual.



Indicates hazardous voltages.



Indicates the chassis terminal

WARNING *Calls attention to a procedure, practice, or condition that could cause bodily injury or death.*

CAUTION *Calls attention to a procedure, practice, or condition that could possibly cause damage to equipment or permanent loss of data.*

Safety instructions

Your safety is our primary concern! Please be safe!



General safety and hazard warnings for all DEWETRON systems

- Use this system under the terms of the specifications only to avoid any possible danger. If the unit is used in a manner not specified by the manufacturer the protection can be impaired!
- This product is intended for use in industrial locations. As a result, this product may cause interference if used in residential areas. Such use must be avoided unless the user takes special measures to reduce electromagnetic emissions to prevent interferences to the reception of radio and television broadcasts.
- Maintenance will be executed by qualified staff only.
- During the use of the system, it might be possible to access another parts of a more comprehensive system. Please read and follow the safety instructions provided in the manuals of all other components regarding warning and security advices for using the system.
- With this product, only use the power cable delivered or defined for the host country.
- DO NOT connect or disconnect sensors, probes or test leads, as these parts are connected to a voltage supply unit.
- The system is grounded via a protective conductor in the power supply cord. To avoid electric shocks, the protective conductor has to be connected with the ground of the power network. Before connecting the input or output connectors of the system, make sure that there is a proper grounding to guarantee potential free usage. For countries, in which there is no proper grounding, please refer to your local legally safety regulations for safety use.

DC systems: Every DC system has a grounding connected to the chassis (yellow/green safety banana plug).

- Please note the characteristics and indicators on the system to avoid fire or electric shocks. Before connecting the system, please carefully read the corresponding specifications in the product manual.
- The inputs are not, unless otherwise noted (CATx identification), for connecting to the main circuits of category II, III and IV. The measurement category can be adjusted depending on module configuration.
- The power cord separates the system from the power supply. Do not block the power cord, since it has to be accessible for the users.
- Supply overvoltage category is II.
- DO NOT use the system if equipment covers or shields are removed.
- If you assume the system is damaged, get it examined by authorised personnel only.
- Any use in wet rooms, outdoors or in adverse environmental condition is not allowed!
Adverse environmental conditions are:
 - Moisture or high humidity
 - Dust, flammable gases, fumes or dissolver
 - Thunderstorm or thunderstorm conditions (except assembly PNA)
 - Electrostatic fields, et cetera.
- Any direct voltage output is protected with a fuse against short cut and reverse-polarity, but is NOT galvanically isolated (except it is explicit marked on the system).
- The system must be connected and operated to an earthed wall socket at the AC mains power supply only (except for DC systems).
- Any other use than described above may damage your system and is attended with dangers like shortcut, fire or electric shocks.

Safety instructions

- The whole system must not be changed, rebuilt or opened (except for changing TRION™ modules).
 - If you assume a more riskless use is not provided anymore, the system has to be rendered inoperative and should be protected against inadvertent operation. It is assumed that a more riskless operation is not possible anymore, if
 - the system is damaged obviously or causes strange noises.
 - the system does not work anymore.
 - the system has been exposed to long storage in adverse environmental.
 - the system has been exposed to heavy shipment strain.
 - DO NOT touch any exposed connectors or components if they are live wired. The use of metal bare wires is not allowed. There is a risk of short cut and fire hazard!
 - Warranty void if damages caused by disregarding this manual. For consequential damages NO liability will be assumed!
 - Warranty void if damages to property or persons caused by improper use or disregarding the safety instructions.
 - Unauthorized changing or rebuilding the system is prohibited due to safety and permission reasons (CE). Exception: changing TRION™ modules.
 - The assembly of the system is equivalent to protection class I. For power supply, only the correct power socket of the public power supply must be used, except the system is DC powered.
 - Be careful with voltages $>25 V_{AC}$ or $>35 V_{DC}$! These voltages are already high enough in order to get a perilous electric shock by touching the wiring.
 - Maximum input voltage for measuring cards are $70 V_{DC}$ and $46.7 V_{PEAK}$
 - The product heats during operation. Make sure there is adequate ventilation. Ventilation slots must not covered!
 - Only fuses of the specified type and nominal current may be used. The use of patched fuses is prohibited.
 - Prevent using metal bare wires! Risk of short cut and fire hazard!
 - DO NOT use the system before, during or shortly after a thunderstorm (risk of lightning and high energy overvoltage). An advanced range of application under certain conditions is allowed with therefore designed products only. For details please refer to the specifications.
 - Make sure that your hands, shoes, clothes, the floor, the system or measuring leads, integrated curcuits and so on, are dry.
 - DO NOT use the system in rooms with flammable gases, fumes or dust or in adverse environmental conditions.
 - Avoid operation in the immediate vicinity of:
 - high magnetic or electromagnetic fields
 - transmitting antennas or high-frequency generators
- For exact values please refere to enclosed specifications.
- Use measurement leads or measurement accessories aligned to the specification of the system only. Fire hazard in case of overload!
 - Do not switch on the system after transporting it from a cold into a warm room and vice versa. The thereby created condensation may damage your system. Acclimatise the system unpowered to room temperature.
 - Do not disassemble the system! There is a high risk of getting a perilous electric shock. Capacitors still might charged, even the system has been removed from the power supply.

Safety instructions

- The electrical installations and equipments in industrial facilities must be observed by the security regulations and insurance institutions.
- The use of the measuring system in schools and other training facilities must be observed by skilled personnel.
- The measuring systems are not designed for use at humans and animals.
- Please contact a professional if you have doubts about the method of operation, safety or the connection of the system.
- Please be careful with the product. Shocks, hits and dropping it from already lower level may damage your system. For exact values please refer to enclosed specifications.
- Please also consider the detailed technical reference manual as well as the security advices of the connected systems.

This product has left the factory in safety-related flawless and proper condition.

In order to maintain this condition and guarantee safety use, the user has to consider the security advices and warnings in this manual.

EN 61326-3-1:2008

IEC 61326-1 applies to this part of IEC 61326 but is limited to systems and equipment for industrial applications intended to perform safety functions as defined in IEC 61508 with SIL 1-3.

The electromagnetic environments encompassed by this product family standard are industrial, both indoor and outdoor, as described for industrial locations in IEC 61000-6-2 or defined in 3.7 of IEC 61326-1. Equipment and systems intended for use in other electromagnetic environments, for example, in the process industry or in environments with potentially explosive atmospheres, are excluded from the scope of this product family standard, IEC 61326-3-1.

Devices and systems according to IEC 61508 or IEC 61511 which are considered as “operationally well-tried”, are excluded from the scope of IEC 61326-3-1.

Fire-alarm and safety-alarm systems, intended for protection of buildings, are excluded from the scope of IEC 61326-3-1.



*For safety reasons max. 50 V may be applied to the BNC input-connectors!
Refer to the regulation of maximum allowable touch potential.*

Maintenance

The information in this section is designed for use by qualified service personal.

Service interval:

Clean dust from the chassis exterior/interior and exchange filter foam based on the operating environment.

Cleaning:

Clean surface of the chassis with dry lint-free cloth.

Use a dry velocity stream of air to clean the chassis interior.



- Disconnect all cables before servicing the unit!
- Many components within the chassis are sensitive to static discharge damage. Always wear a ground wrist strap and service the unit only in static-free environment.
- Do not use harsh chemical cleaning agents!

General information

CAUTION

- The system BIOS is protected by password. Any change in the BIOS may cause a system crash. When the system is booting, do not press ESC-button on keyboard. This may clear the BIOS settings and cause system faults.
- Any change in the file structure as deleting or adding files or directories might cause a system crash.
- Before installing software updates contact DEWETRON or your local distributor. Use only software packages which are released by DEWETRON. Further informations are also available in the internet (<http://www.dewetron.com>).
- After power off the system wait at least 10 seconds before switching the system on again. Otherwise the system may not boot correct. This prolongs also the life of all system components.

Windows updates and antivirus/security software

Before installing Windows software updates consult with DEWETRON for compatibility guidance. Please also keep in mind that the use of any antivirus or other security software may slow down your system and may cause data loss.

Problematic network stacks

Often intrusive IT software or network processes can interfere with the primary function of the DEWETRON system: to record data. Therefore we recommend strongly against the installation of IT/MIS software and running their processes on any DEWETRON data acquisition system, and cannot guarantee the performance of our systems if they are so configured.



Environmental Considerations

Information about the environmental impact of the product.

Product End-of-Life Handling

Observe the following guidelines when recycling a DEWETRON system:

System and Components Recycling

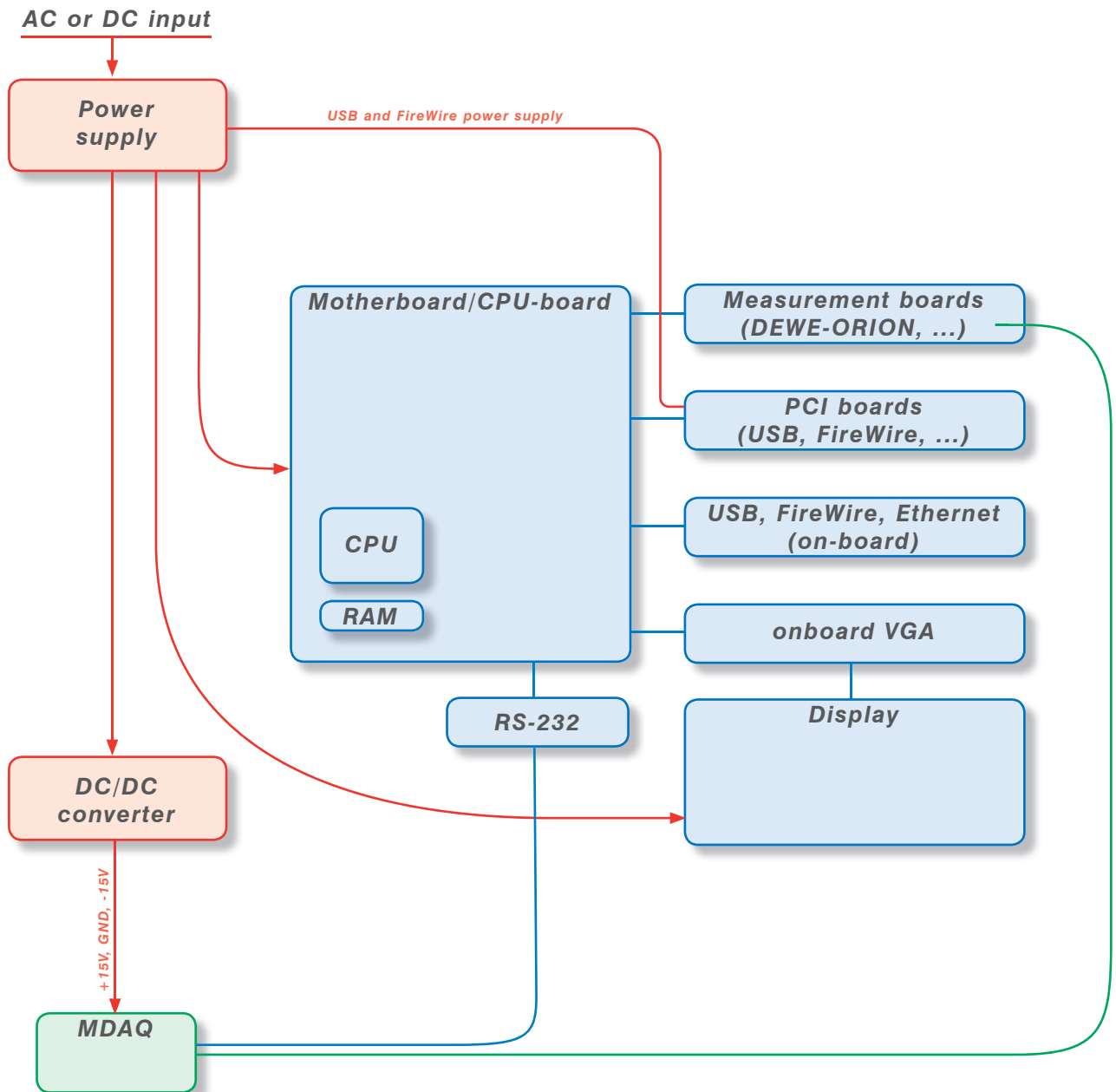
Production of these components required the extraction and use of natural resources. The substances contained in the system could be harmful to your health and to the environment if the system is improperly handled at it's end of life! Please recycle this product in an appropriate way to avoid an unnecessary pollution of the environment and to keep natural resources.

This symbol indicates that this system complies with the European Union's requirements according to Directive 2002/96/EC on waste electrical and electronic equipment (WEEE). Please find further information about recycling on the DEWETRON website www.dewetron.com

Restriction of Hazardous Substances

This product has been classified as Monitoring and Control equipment, and is outside the scope of the 2011/65/EU RoHS Directive. This product is known to contain lead.

Blockdiagram of the internal signal processing



First steps

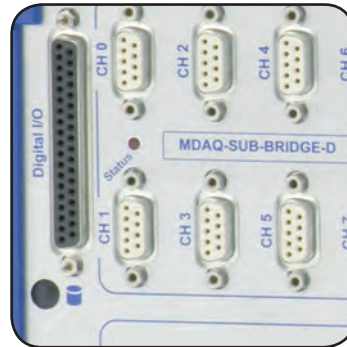
First steps

1



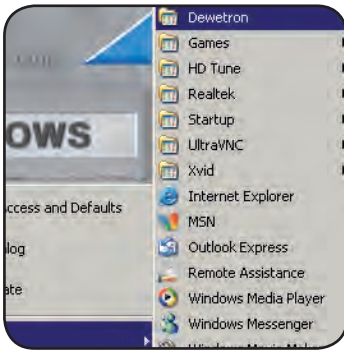
Power-on your system.

2



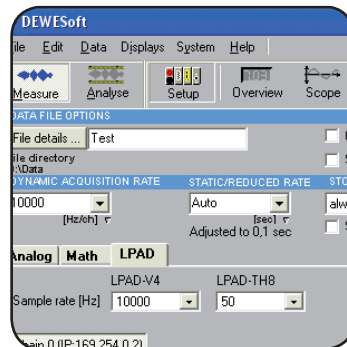
Connect your sensors to the system.

3



Run DEWESoft usually via "Start" > "Programs" > "Dewetron" > "DEWESoft x.x" > "DEWESoft x.x"

4



Start recording your data!

All accessories shown in this document are available as option and will not be shipped as standard parts. These parts are described as "option".

DEWE-901 PC instrument

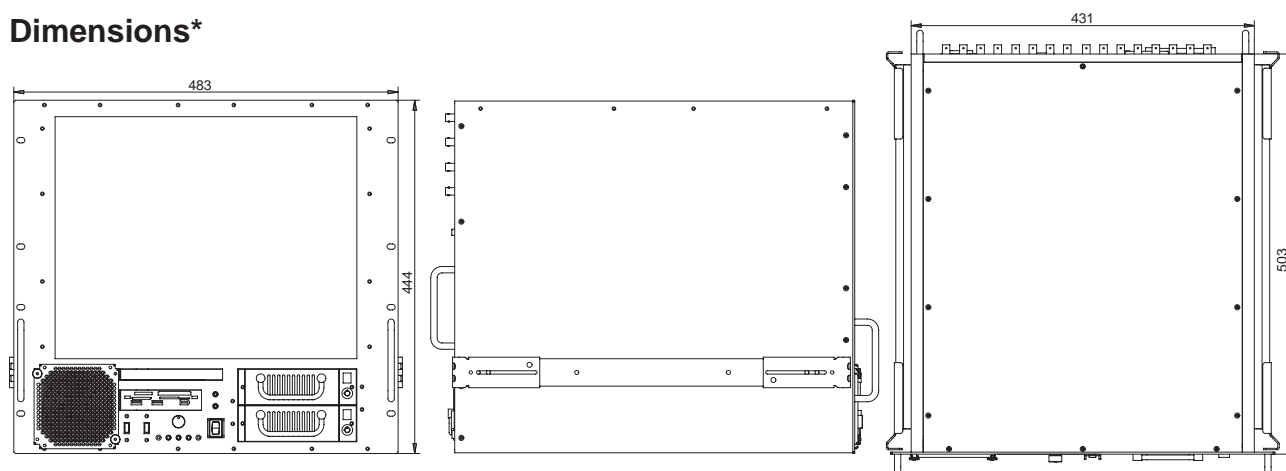
- 19" rack mount data acquisition system
- Prepared for up to 4 MDAQ-Modules
- Up to 256 channels with external expansion racks or PAD modules
- A/D converter specs see appendix A



System specifications

DEWE-901	
MDAQ-	-INT-V- -SUB-V-200 -SUB-ACC-x -SUB-BRIDGE -INT-BASE- -FILT-5- -FILT-10
Channel 0 to 7	-10 <input type="checkbox"/> -100 <input type="checkbox"/> <input type="checkbox"/> <input type="checkbox"/> <input type="checkbox"/> -5 <input type="checkbox"/> -10 <input type="checkbox"/> -BU <input type="checkbox"/> -BE <input type="checkbox"/> <input type="checkbox"/>
Channel 8 to 15	<input type="checkbox"/> <input type="checkbox"/> <input type="checkbox"/> <input type="checkbox"/> <input type="checkbox"/> <input type="checkbox"/> <input type="checkbox"/> <input type="checkbox"/>
Channel 16 to 23	-10 <input type="checkbox"/> -100 <input type="checkbox"/> <input type="checkbox"/> <input type="checkbox"/> <input type="checkbox"/> -5 <input type="checkbox"/> -10 <input type="checkbox"/> -BU <input type="checkbox"/> -BE <input type="checkbox"/> <input type="checkbox"/>
Channel 24 to 31	<input type="checkbox"/> <input type="checkbox"/> <input type="checkbox"/> <input type="checkbox"/> <input type="checkbox"/> <input type="checkbox"/> <input type="checkbox"/> <input type="checkbox"/>
Channel 32 to 39	-10 <input type="checkbox"/> -100 <input type="checkbox"/> <input type="checkbox"/> <input type="checkbox"/> <input type="checkbox"/> -5 <input type="checkbox"/> -10 <input type="checkbox"/> -BU <input type="checkbox"/> -BE <input type="checkbox"/> <input type="checkbox"/>
Channel 40 to 47	<input type="checkbox"/> <input type="checkbox"/> <input type="checkbox"/> <input type="checkbox"/> <input type="checkbox"/> <input type="checkbox"/> <input type="checkbox"/> <input type="checkbox"/>
Channel 48 to 55	-10 <input type="checkbox"/> -100 <input type="checkbox"/> <input type="checkbox"/> <input type="checkbox"/> <input type="checkbox"/> -5 <input type="checkbox"/> -10 <input type="checkbox"/> -BU <input type="checkbox"/> -BE <input type="checkbox"/> <input type="checkbox"/>
Channel 56 to 63	<input type="checkbox"/> <input type="checkbox"/> <input type="checkbox"/> <input type="checkbox"/> <input type="checkbox"/> <input type="checkbox"/> <input type="checkbox"/> <input type="checkbox"/>
Power supply:	<input type="checkbox"/> 400 W (100 to 240 V _{AC}) ATX power supply 000001 € <input type="checkbox"/> 300 W (12 V _{DC}) ATX power supply DX 300HEW <input type="checkbox"/> 300 W (24 V _{DC}) ATX power supply APT-DY300H
	for details see next pages
Operating temperature:	-5 °C to 50 °C (standard)
Storage temperature:	-20 °C to +70 °C
Humidity (operating):	10 % to 80 %, non condensing 5 % to 95 %, rel. humidity
Dimensions (W x D x H):	approx. 483 x 503 x 444 mm (19 x 19.8 x 17.4 in.)
Weight:	typ. 25 kg (55 lbs), depending on configuration

Dimensions*



* Dimensions in mm
(1 inch = 25.4 mm)

Main System

Cleaning the filter pad

Note: Check the filter pad frequently! A polluted filter pad may cause an overheating of the system! The cleaning interval depends on the environmental conditions.

To clean or exchange the filter pad you only have to open two screws on the left front of the system and pull out the filter.



Dismount of the filter cover

Connectors



14 4 9 4 10

Typical DEWE-901 front view



2, 1, 4, 4, 11, 7

Typical DEWE-901 rear view

Connector overview:

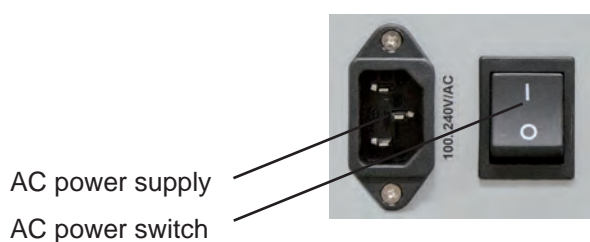
1. Power supply connector with general power switch
2. PS/2 keyboard connector
3. PS/2 mouse connector
4. USB interface connectors
5. LPT interface connector
6. RS-232 interface connector
7. DVI and LVDS connector (NO SCSI!)
8. Ethernet LAN connector
9. IEEE-1394 (FireWire®) connector
10. Power-on button
11. Ground connectors
12. Digital I/O connector
13. Optional RS-485 interface with power supply for EPAD modules (fuse 1 A)
14. Audio connectors (in, mic, out)
15. Optional trigger input connector
16. Optional clock input connector

Note: The location of the connectors might vary from system to system and depends on system configuration

Power supply connectors

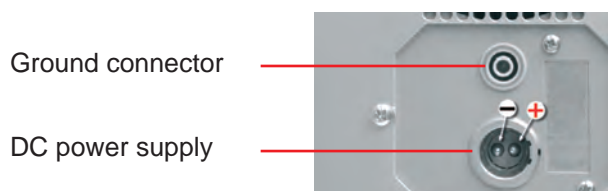
400 W AC power supply

400 W AC power supply		BEA-640	
Input:			
Rated input voltage:	100 to 240 V _{AC} (max. 90 to 264 V _{AC}); active PFC		
Input frequency:	47 to 63 Hz		
Max. input current:	7 A (115 V _{AC}), 3.5 A (230 V _{AC})		
Output:			
Output power:	max. 400 W		
Output voltages:	+3.3 V (max. 28 A)	-5 V (max. 0.5 A)	
	+5 V (max. 35 A)		
	+5 Vsb (max. 2 A)		
	+12 V (max. 30 A)	-12 V (max. 0.8 A)	



300 W DC power supply

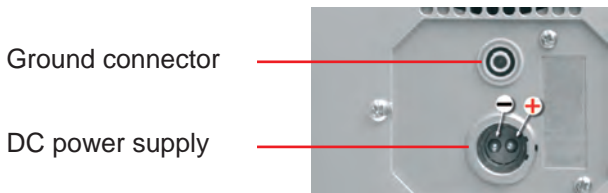
300 W DC power supply		DX 300HEW	
Input:			
Input range:	9 to 18 V _{DC} (12 V _{DC} nom.)		
Input frequency:	DC		
Max. input current:	50 A		
Output:			
Output power:	250 W		
Output voltages:	+3.3 V (max. 20 A)	-5 V (max. 0.3 A)	
	+5 V (max. 35 A, min. 3 A)		
	+5 Vsb (max. 2 A)		
	+12 V (max. 18 A, min. 0.5 A)	-12 V (max. 2 A)	



Main System

300 W DC power supply

300 W DC power supply		APT-DY300HEW	
Input:			
Input range:	18 to 36 V _{DC} (24 V _{DC} nom.)		
Input frequency:	DC		
Max. input current:	25 A		
Output:			
Output power:	300 W		
Output voltages:	+3.3 V (max. 28 A)		
	+5 V (max. 30 A, min. 3 A, peak 35 A)		-5 V (max. 1 A)
	+5 Vsb (max. 1.5 A)		
	+12 V (max. 12 A, min. 1 A, peak 15 A)		-12 V (max. 2 A)



PS/2 mouse connector

The mouse / trackball connector is used to connect the trackball embedded in the keyboard or an external PS/2 mouse. The connector meets standard PS/2 pin assignment.

PS/2 keyboard connector

The keyboard connector is used to connect PS/2 keyboard to DEWE-901 system. The connector meets standard PS/2 pin assignment.

USB interface connectors (Universal Serial Bus)

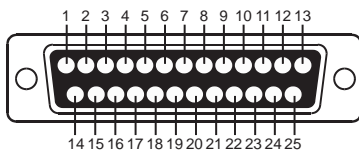
The USB interface connectors meets standard USB pin assignment.

LPT printer interface connector

The printer interface connector (female) is located on the rear side of the DEWE-901. It is configured as standard LPT interface.



25-pin SUB-D connector (female)



Schematic

Pin assignment

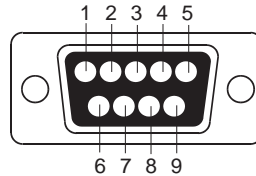
1: Strobe	14: Auto FD
2: Data 1	15: Error
3: Data 2	16: Init
4: Data 3	17: Select In
5: Data 4	18: GND
6: Data 5	19: GND
7: Data 6	20: GND
8: Data 7	21: GND
9: Data 8	22: GND
10: ACK	23: GND
11: Busy	24: GND
12: PE	25: GND
13: Select	

RS-232 interface connector (COM1)

The RS-232 interface connector (male) is located on the rear side of the DEWE-901. It is configured as standard RS-232 interface COM 1 and can be used for mouse or other peripheral units.



9-pin SUB-D connector (male)



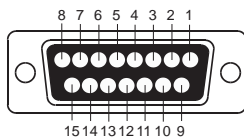
Schematic

Pin assignment

- 1: DCD (Data Carrier Detector)
- 2: RD (Received Data)
- 3: TD (Transmitted Data)
- 4: DTR (Data Terminal Ready)
- 5: GND (Ground)
- 6: DSR (Data Set Ready)
- 7: RTS (Request To Send)
- 8: CTS (Clear To Send)
- 9: RI (Ring Indicator)

RS-485 interface connector (option)

The RS-485 interface connector is prepared to communicate with additional EPAD modules and to supply them.



15-pin SUB-D connector (female)

Pin assignment

- 1 RS-485 A
 - 2 RS-485 B
 - 3 RS-485 GND
 - 14 GND (EPAD supply)
 - 15 + 12 V (EPAD supply)
- the remaining pins are not connected

DVI connector

The DVI connector offers the possibility to connect an external display



15-pin mini-SUB-D connector (male)



Schematic

Pin assignment

- | | | | |
|-------------------------|---------------------------|--------------------------|--------------------|
| 1: TDMS-data 2- | 9: TDMS-data 1- | 17: TDMS-data 0- | C1: Analog: red |
| 2: TDMS-data 2+ | 10: TDMS-data 1+ | 18: TDMS-data 0+ | C2: Analog: green |
| 3: Shield TDMS-data 2,4 | 11: Shield TDMS-Daten 1,3 | 19: Shield TDMS-data 0,5 | C3: Analog: blue |
| 4: TDMS-data 4- | 12: TDMS-data 3- | 20: TDMS-data 5- | C4: Analog: H-Sync |
| 5: TDMS-data 4+ | 13: TDMS-data 3+ | 21: TDMS-data 5+ | C5: Analog: ground |
| 6: DDC clock | 14: +5 volt | 22: Shield TDMS-Takt | |
| 7: DDC data | 15: Ground for +5 volt | 23: TDMS-clock+ | |
| 8: Analog: V-Sync | 16: Hotplug-Detect | 24: TDMS-clock - | |

Main System

Ethernet connector

The DEWE-901 system supports 10/100/1000 BaseT Ethernet with standard RJ45 connector.

Power-on button

The power-on button has to be used to switch on the system. It only works when the main power switch is on.

Digital I/O connector

This connector supports digital input and output lines of the built-in A/D board. If this board does not support digital I/O's, the connector is not available.

The pin assignment is depending on A/D board used - details are available in appendix B.

Ground connector

For some kind of measurements, it's necessary to give the system an additional ground connection.

Trigger input connector (option)

Please find details about the allowed trigger levels in appendix B (internal wiring).

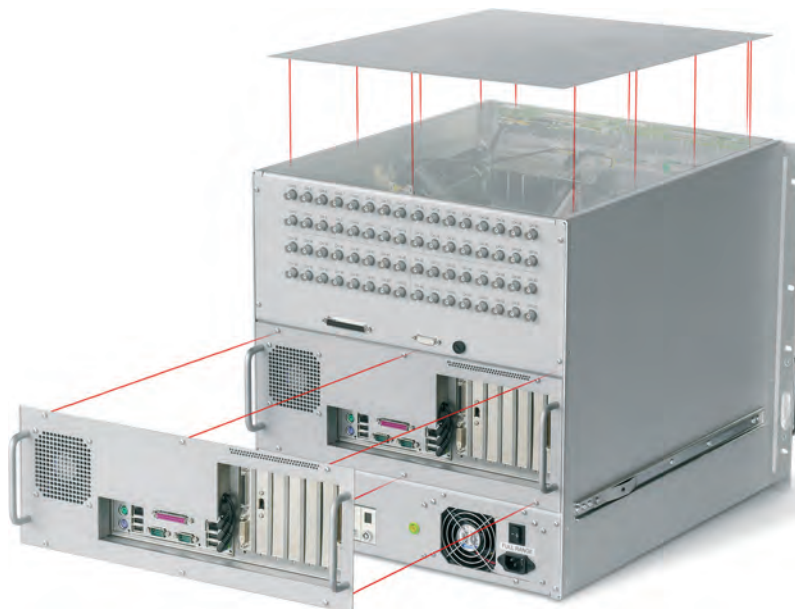
Clock input connector (option)

Please find details about the allowed clock levels in appendix B (internal wiring).

Trouble shooting

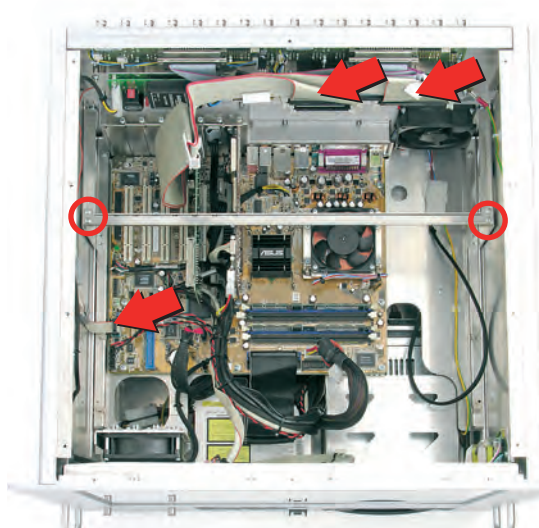
PC-part

To service the internal PC-part unscrew the 12 screws and remove the top cover from the system first.



Disconnect the marked cables (arrows in the picture below) if you just want to pull out the PC-part for 15 centimeters. Unscrew the six screws of the PC-part and pull it out carefully by watching the internal cables. If you want to pull out the PC-part completely you have to disconnect all cables between the system and the PC-part!

To add PCI cards you have to unscrew the four screws marked with circles in the picture below.



WARNING: The system may only be opened by experts. Disconnect power supply and measurement inputs before opening the system! Touch internal parts only in an ESD protected area!

Main System

Display "ghost pictures"

If there is displayed the same picture on your display for some days it's possible that this picture will be "burned in" to the display! Its recommended to modify your power settings at: start - settings - control panel - power option properties. It's your choice within which time the display should be powered off automatically!

Blocked drawer position

Leave the blocked drawer position by pressing the small button in the telescoping slide.



A/D & D/A Conversion

A/D Conversion

Please find information about the A/D conversion in the attached DEWE-ORION series manual. The latest version of the manual can be downloaded from:

<http://download.dewetron.com/dl/components/adboards>

Informations regarding different manufacturer's see the corresponding D/A card manual.

A/D & D/A Conversion

Notes

Internal Wiring

Please find information about the MDAQ amplifiers in the attached DEWE-MDAQ series manual. The latest version of the manual can be downloaded from:

<http://download.dewetron.com/dl/products/signal/mdaq>

Internal Wiring

Notes

Declaration of conformity

Following products are in conformity with EN50081 (Electromagnetic compatibility, generic emission standard for light and heavy industry) and EN50082 (Electromagnetic compatibility, generic immunity standard for light and heavy industry):

DEWE-2000 / DEWE-2010 / DEWE-2500 series

DEWE-3000 / DEWE-3010 / DEWE-3020 series

DEWE-4000 / DEWE-4010 series

DEWE-200 series

DEWE-500 series

DEWE-5000 series

DEWE-600 series

DEWE-800 series

DEWE-900 series

DEWE-BOOK series

DEWE-RACK series

DAQ / MDAQ modules series

PAD / EPAD modules series

Note: Enhanced EMC specifications are achieved when using DC power supply input.

Manufacturer:

DEWETRON Elektronische Messgeraete Ges.m.b.H.
Parkring 4
A-8074 Graz-Grambach
Austria

Tel.: +43 316 3070 0
Fax: +43 316 3070 90
e-mail: sales@dewetron.com
<http://www.dewetron.com>

Graz, Nov. 15th, 2004



Ing. Herbert Wernigg
Managing director

Notes
