

# DEWE-5000

- High-end benchtop all-in-one instrument
- 16 isolated DAQP analog inputs
- Flexible sidepanel for counters, sensor supply ...
- Up to 5 PCI slots for A/D and other cards (1394, ARINC, 1553...)



DEWE-5000 series	
Input specifications	DEWE-5000
Slots for DAQP/HSI/PAD modules	16
<b>Main system <sup>1)</sup></b>	
Total PCI slots	5 (4 full / 1 half length)
Hard disk	1000 GB
Data throughput	Typ. 70 MB/s <sup>2)</sup>
Power supply (max.)	90 to 264 V <sub>AC</sub>
Display	17.3" full-HD TFT (1920 x 1080)
Processor	Intel® Core™ i5
RAM	8 GB
Ethernet	2x 1 Gbit 2 LAN
USB interfaces	6
RS-232 interface	1
Operating system	64 bit Microsoft® WINDOWS® 7
Dimensions (W x D x H)	460 x 351 x 192 mm (18.1 x 13.8 x 7.7 in.)
Weight	Typ. 17 kg (37 lb.)
<b>Environmental specifications</b>	
Operating temperature	0 to +50 °C, down to -20 °C with prewarmed unit
Storage temperature	-20 to +70 °C
Humidity	10 to 80 % non cond., 5 to 95 % rel. humidity
Vibration <sup>3)</sup>	MIL-STD 810F 514.5, procedure I
Shock <sup>3)</sup>	MIL-STD 810F 516.5, procedure I
<sup>1)</sup> Please find current specifications in the latest price list <sup>2)</sup> Depends on the system configuration. Examples: • DEWE-5000 with 4x DEWE-ORION-1624-200 and 1x DEWE-CAM01 = 72 MB/s • DEWE-5000 with 2x DEWE-ORION-1624 + 4x DEWE-CAM01 = 60 MB/s <sup>3)</sup> Tested with Solid State Disk	

### Needed to complete the system

DEWE-ORION "A/D Boards" offer simultaneous sampled analog inputs, synchronous digital I/Os, high-performance counters and high-speed CAN interfaces. DAQP signal amplifiers and software are needed as well.

### Options to expand the system

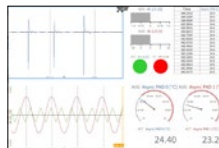
Add further "Interface Cards" like ARINC-429, 1553, and analog output or special "Sensors" like synchronized video, industrial encoders (RIE-360) or GPS.



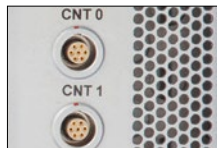
A/D card



DAQP



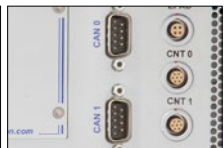
Software



CNT2-LEMO



VIDEO



CAN

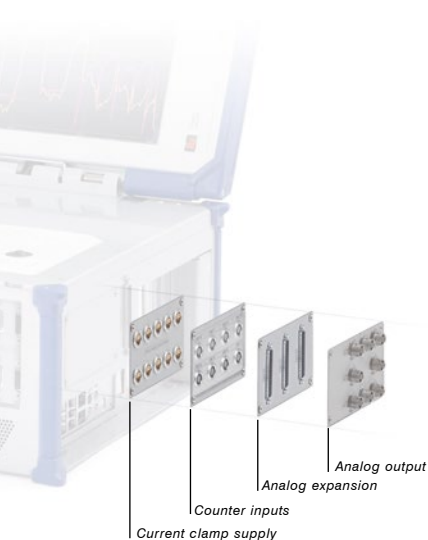


DEWE-5000

**DEWE-5000**

Most flexible model, prepared for DAQP **isolated** analog input amplifier modules. DAQP conditioners offer highest bandwidth, great accuracy, different input ranges and integrated filters. Besides the single channel modularity – a module easily can be changed by the user at any time – the main advantage of these modules is the high galvanic isolation which ensures safe measurements, high quality results and make them almost indestructible. See chapter “Signal Conditioning” for details.

Max. channel count	<b>ANALOG</b>	16 DAQ modules
	<b>DIGITAL</b>	I/O card & counter & CAN



**Flexible side panel**

The DEWE-5000 series instruments offer a flexible side panel prepared for adding additional connectors.

The most popular use of this panel is adding Lemo sockets for counter / encoder inputs. However, there are many different versions like multiple Binder 712 power supply connectors for current transducers, BNC sockets for analog outputs, multi-pin Sub-d sockets for additional analog inputs ...



DEWE-5000 side view

Due to the high number of available PCI slots the connection of additional interfaces like CAN bus, ARINC-429, Firewire-1394 etc. is done directly via the slot panel.

- Side panel with 10 connectors for powering current transducers
- 2 CAN interfaces on slot panel
- 2 FireWire interfaces on slot panel

**Example Configurations**



**5000-PS-BAT**  
Optional battery power supply with UPS function

System options and upgrades for DEWE-5000 series	
Options	Description
BAT-89WH	Lithium-Ion battery, 14.4 V, 89Wh, max. 8A
BAT-CHARGER-1	Desktop battery charger for 1 battery, incl. external AC adaptor
BAT-CHARGER-4	Desktop battery charger for 4 batteries, incl. external AC adaptor
PS-BAT-REMOTE-ON	Special add-on for the battery power supply, one extra connection with a wake-up signal is required
DEWE-DCDC-24-300-ISO	External DC/DC converter with isolation, input: 11 to 32 VDC, output: 24 VDC, 300 W
5000-PS-BAT	Battery power supply with UPS function, 18 .. 24 V <sub>DC</sub> non-isolated input, incl. external AC adaptor, 3 slots for hot-swappable batteries, 3 batteries for appr. 2 hours operation included
Upgrades	Description
5000-CPU-UP-I7	Upgrade of PC for DEWE-5000 series to Intel® Core™ i7 processor
RAM-8GB-16GB	Upgrade from 8 GB to 16 GB RAM (total)
HDD-1T-SSD-256G	Upgrade to industrial grade 256 GB solid state disk (replaces 1 TB harddisk)
HDD-1T-SSD-1T	Upgrade to industrial grade 1 TB solid state disk (replaces 1 TB harddisk)

## Popular Accessories



Internal 256 GB Solid State Disk for maximum reliability



Accessory: 5000-CSMK1



Option 5000-DC-12V  
Internal 9 .. 18 V<sub>DC</sub> power supply including external AC adaptor.



Option BAT-CHARGER-1 and BAT-CHARGER-4



A carrying bag is available

## Channel Expansion

Signal conditioning for slow signals is added by connecting EPAD2 series modules to the systems EPAD interface.

For expanding the number of dynamic channels there are three choices:

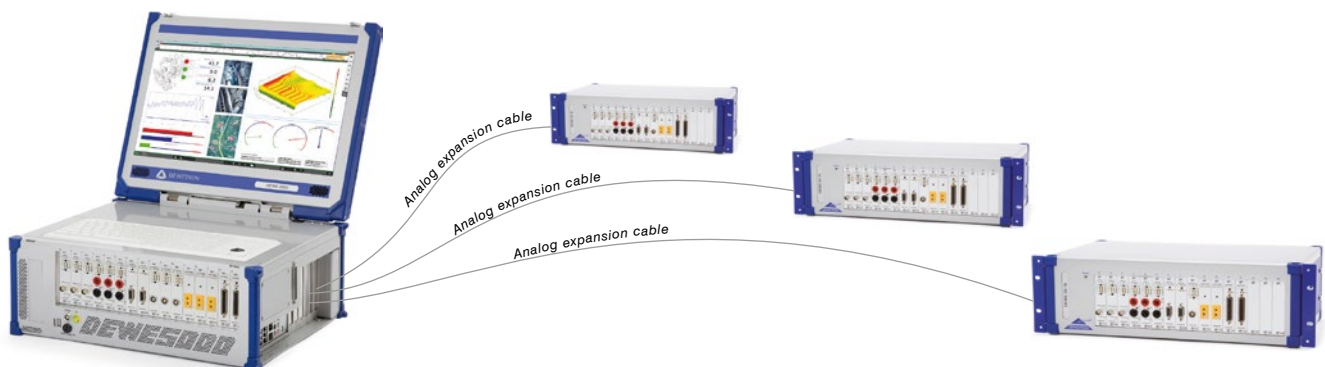
**Analog cable:** Additional A/D boards are installed into the basic instrument and external signal conditioning, e.g. DAQ modules in a DEWE-30 chassis, is connected by means of an analog signal cable.

**PCI expansion:** A PCI-HOST card is installed into the basic instrument and external signal conditioning, e.g. DAQ modules in a DEWE-50 chassis, is connected by means of a PCI cable.

**DEWE-NET:** Several instruments are connected via Ethernet. Each unit requires an ORION-SYNC option. For short distances a sync cable is used if the units are far from each other a sync interface like DEWE-CLOCK is used.

## Example

Analog expansion standard 2 m | optional up to 50 meter



DEWE-5000 with DEWE-30-16 signal conditioning chassis; DAQP modules for voltage, ICP®, bridge, strain ... measurement