



Automotive
Energy & Power Analysis
Aerospace & Defense
Transportation
General Test & Measurement

DEWE-51-PCI-192

Technical reference manual



ISO9001

Re-inventing Data Acquisition



Copyright © DEWETRON elektronische Messgeraete Ges.m.b.H.

This document contains information which is protected by copyright. All rights are reserved. Reproduction, adaptation, or translation without prior written permission is prohibited, except as allowed under the copyright laws.

All trademarks and registered trademarks are acknowledged to be the property of their owners.

Thank you!

Thank you very much for your investment in DEWETRON's unique data acquisition systems. These are top-quality instruments which are designed to provide you years of reliable service. This guide has been prepared to help you get the most from your investment, starting from the day you take it out of the box, and extending for years into the future.

This guide includes important startup notes, as well as safety notes and information about keeping your DEWETRON system in good working condition over time.

We strongly suggest that you read this entire manual, especially the safety and care sections, as well as to avoid damaging your DEWETRON system.

What is the DEWE-51-PCI-192?

This product is used for measuring of different physical and/or electrical sizes (depending on model or configuration). The connection is depending on model or configuration and takes place via safety banana plugs, BNC connectors ($\pm 50V$ max.), D-SUB connectors ($\pm 50V$ max.), thermocouple connectors ($\pm 50V$ max.), BINDER® connectors ($\pm 50V$ max.) or LEMO® connectors.

Preface

Notes

Content

General Information, Safety Instructions	7
Training	7
Calibration.....	7
Support	7
Service/repairs	7
Warranty Information	8
Printing History.....	8
Safety symbols in the manual	9
General safety and hazard warnings for all DEWETRON systems	10
Windows updates and antivirus/security software	13
Problematic network stacks	13
Environmental Considerations	13
Blockdiagram of the internal signal processing	14
First steps	15
Main System	17
DEWE-51-PCI-192	17
System specifications	17
Software installation	19
Connectors	23
Internal signal processing	24
Power supply	25
Adding or exchanging PCI-Boards	27
A/D Conversion	A1
Internal Wiring	B1
CE-Certificate of conformity	C1

Table of content

Training

DEWETRON offers training at various offices around the world several times each year. DEWETRON headquarters in Austria have a very large and professional conference and seminar center, where training classes are conducted on a regular basis starting with sensors and signal conditioning, A/D technology and software operation. For more information about training services, please visit:
<http://www.dewetron.com/support/training>

Dewetron Inc. in the USA also has a dedicated training facility connected to its headquarters, located in Rhode Island. For more information about training services in the US, please visit:
<http://www.dewamerica.com/support/training>

Calibration

Every instrument needs to be calibrated at regular intervals. The standard norm across nearly every industry is annual calibration. Before your DEWETRON data acquisition system is delivered, it is calibrated at our DEWETRON headquarter. Each of this system is delivered with a certificate of compliance with our published specifications. Detailed calibration reports from our calibration system are available for purchase with each order. We retain them for at least one year, so calibration reports can be purchased for up to one year after your system was delivered.

Support

DEWETRON has a team of people ready to assist you if you have any questions or any technical difficulties regarding the system. For any support please contact your local distributor first or DEWETRON directly.

For Asia and Europe, please contact:

DEWETRON Ges.m.b.H.
Parkring 4
A-8074 Graz-Grambach
AUSTRIA
Tel.: +43 316 3070
Fax: +43 316 307090
Email: support@dewetron.com
Web: <http://www.dewetron.com>

The telephone hotline is available
Monday to Friday between
08:00 and 17:00 CET (GMT +1:00)

Service/repairs

The Team of DEWETRON also performs any kinds of repairs to your system to assure a safe and proper operation in future. For information regarding service and repairs please contact your local distributor first or DEWETRON directly.

For the Americas, please contact:

DEWETRON, Inc.
10 High Street, Suite K
Wakefield, RI 02879
U.S.A.
Tel.: +1 401 284 3750
Toll-free: +1 877 431 5166
Fax: +1 401 284 3755
Email: support@dewamerica.com
Web: <http://www.dewamerica.com>

The telephone hotline is available
Monday to Friday between
08:00 and 17:00 GST (GMT -5:00)

Notice

The information contained in this document is subject to change without notice.

DEWETRON elektronische Messgeraete Ges.m.b.H. (DEWETRON) shall not be liable for any errors contained in this document. DEWETRON MAKES NO WARRANTIES OF ANY KIND WITH REGARD TO THIS DOCUMENT, WHETHER EXPRESS OR IMPLIED. DEWETRON SPECIFICALLY DISCLAIMS THE IMPLIED WARRANTIES OF MERCHANTABILITY AND FITNESS FOR A PARTICULAR PURPOSE. DEWETRON shall not be liable for any direct, indirect, special, incidental, or consequential damages, whether based on contract, tort, or any other legal theory, in connection with the furnishing of this document or the use of the information in this document.

Warranty Information

A copy of the specific warranty terms applicable to your DEWETRON product and replacement parts can be obtained from your local sales and service office.

Restricted Rights Legend

Use austrian law for duplication or disclosure.

DEWETRON GesmbH
Parkring 4
A-8074 Graz-Grambach / Austria

Printing History

Please refer to the page bottom for printing version.

Copyright © DEWETRON elektronische Messgeraete Ges.m.b.H.

This document contains information which is protected by copyright. All rights are reserved. Reproduction, adaptation, or translation without prior written permission is prohibited, except as allowed under the copyright laws.

All trademarks and registered trademarks are acknowledged to be the property of their owners.

Safety instructions

Safety symbols in the manual



Indicates hazardous voltages.

WARNING *Calls attention to a procedure, practice, or condition that could cause bodily injury or death.*

CAUTION *Calls attention to a procedure, practice, or condition that could possibly cause damage to equipment or permanent loss of data.*

WARNINGS

The following general safety precautions must be observed during all phases of operation, service, and repair of this product. Failure to comply with these precautions or with specific warnings elsewhere in this manual violates safety standards of design, manufacture, and intended use of the product. DEWETRON Elektronische Messgeraete Ges.m.b.H. assumes no liability for the customer's failure to comply with these requirements.

All accessories shown in this document are available as option and will not be shipped as standard parts.



*For safety reasons max. 50 V may be applied to the BNC input-connectors!
Refer to the regulation of maximum allowable touch potential.*

Safety instructions

Your safety is our primary concern! Please be safe!

General safety and hazard warnings for all DEWETRON systems

- Use this system under the terms of the specifications only to avoid any possible danger.
- Maintenance will be executed by qualified staff only.
- During the use of the system, it might be possible to access another parts of a more comprehensive system. Please read and follow the safety instructions provided in the manuals of all other components regarding warning and security advices for using the system.
- With this product, only use the power cable delivered or defined for the host country.
- DO NOT connect or disconnect sensors, probes or test leads, as these parts are connected to a voltage supply unit.
- The system is grounded via a protective conductor in the power supply cord. To avoid electric shocks, the protective conductor has to be connected with the ground of the power network. Before connecting the input or output connectors of the system, make sure that there is a proper grounding to guarantee potential free usage. For countries, in which there is no proper grounding, please refer to your local legally safety regulations for safety use.

DC systems: Every DC system has a grounding connected to the chassis (yellow/green safety banana plug).

- Please note the characteristics and indicators on the system to avoid fire or electric shocks. Before connecting the system, please carefully read the corresponding specifications in the product manual.
- The inputs are not, unless otherwise noted (CATx identification), for connecting to the main circuit of category II, III and IV.
- The power cord separates the system from the power supply. Do not block the power cord, since it has to be accessible for the users.
- DO NOT use the system if equipment covers or shields are removed.
- If you assume the system is damaged, get it examined by authorised personnel only.
- Any use in wet rooms, outdoors or in adverse environmental condition is not allowed!
Adverse environmental conditions are:
 - Moisture or high humidity
 - Dust, flammable gases, fumes or dissolver
 - Thunderstorm or thunderstorm conditions (except assembly PNA)
 - Electrostatic fields, et cetera.
- The measurement category can be adjusted depending on module configuration.
- Any direct voltage output is protected with a fuse against short cut and reverse-polarity, but is NOT galvanically isolated (except it is explicit marked on the system).
- The system must be connected and operated to an earthed wall socket at the AC mains power supply only (except for DC systems).
- Any other use than described above may damage your system and is attended with dangers like shortcut, fire or electric shocks.
- The whole system must not be changed, rebuilt or opened (except for changing DAQ, DAQP, PAD modules).

Safety instructions

- If you assume a more riskless use is not provided anymore, the system has to be rendered inoperative and should be protected against inadvertent operation. It is assumed that a more riskless operation is not possible anymore, if
 - the system is damaged obviously or causes strange noises.
 - the system does not work anymore.
 - the system has been exposed to long storage in adverse environmental.
 - the system has been exposed to heavy shipment strain.
 - DO NOT touch any exposed connectors or components if they are live wired. The use of metal bare wires is not allowed. There is a risk of short cut and fire hazard!
 - Warranty void if damages caused by disregarding this manual. For consequential damages NO liability will be assumed!
 - Warranty void if damages to property or persons caused by improper use or disregarding the safety instructions.
 - Unauthorized changing or rebuilding the system is prohibited due to safety and permission reasons (CE). Exception: changing modules like DAQ, DAQP or PAD.
 - The assembly of the system is equivalent to protection class I. For power supply, only the correct power socket of the public power supply must be used, except the system is DC powered.
 - Be careful with voltages >25 VAC or >35 VDC! These voltages are already high enough in order to get a perilous electric shock by touching the wiring.
 - The product heats during operation. Make sure there is adequate ventilation. Ventilation slots must not be covered!
 - Only fuses of the specified type and nominal current may be used. The use of patched fuses is prohibited.
 - Prevent using metal bare wires! Risk of short cut and fire hazard!
 - DO NOT use the system before, during or shortly after a thunderstorm (risk of lightning and high energy overvoltage). An advanced range of application under certain conditions is allowed with therefore designed products only. For details please refer to the specifications.
 - Make sure that your hands, shoes, clothes, the floor, the system or measuring leads, integrated circuits and so on, are dry.
 - DO NOT use the system in rooms with flammable gases, fumes or dust or in adverse environmental conditions.
 - Avoid operation in the immediate vicinity of:
 - high magnetic or electromagnetic fields
 - transmitting antennas or high-frequency generators
- For exact values please refer to enclosed specifications.
- Use measurement leads or measurement accessories aligned to the specification of the system only. Fire hazard in case of overload!
 - Do not switch on the system after transporting it from a cold into a warm room and vice versa. The thereby created condensation may damage your system. Acclimatise the system unpowered to room temperature.
 - Do not disassemble the system! There is a high risk of getting a perilous electric shock. Capacitors still might be charged, even the system has been removed from the power supply.
 - The electrical installations and equipments in industrial facilities must be observed by the security regulations and insurance institutions.

Safety instructions

- The use of the measuring system in schools and other training facilities must be observed by skilled personnel.
- The measuring systems are not designed for use at humans and animals.
- Please contact a professional if you have doubts about the method of operation, safety or the connection of the system.
- Please be careful with the product. Shocks, hits and dropping it from already lower level may damage your system. For exact values please refer to enclosed specifications.
- Please also consider the detailed technical reference manual as well as the security advices of the connected systems.

This product has left the factory in safety-related flawless and proper condition.

In order to maintain this condition and guarantee safety use, the user has to consider the security advices and warnings in this manual.

EN 61326-3-1:2008

IEC 61326-1 applies to this part of IEC 61326 but is limited to systems and equipment for industrial applications intended to perform safety functions as defined in IEC 61508 with SIL 1-3.

The electromagnetic environments encompassed by this product family standard are industrial, both indoor and outdoor, as described for industrial locations in IEC 61000-6-2 or defined in 3.7 of IEC 61326-1. Equipment and systems intended for use in other electromagnetic environments, for example, in the process industry or in environments with potentially explosive atmospheres, are excluded from the scope of this product family standard, IEC 61326-3-1.

Devices and systems according to IEC 61508 or IEC 61511 which are considered as “operationally well-tried”, are excluded from the scope of IEC 61326-3-1.

Fire-alarm and safety-alarm systems, intended for protection of buildings, are excluded from the scope of IEC 61326-3-1.

CAUTION

- The system BIOS is protected by password. Any change in the BIOS may cause a system crash. When the system is booting, do not press ESC-button on keyboard. This may clear the BIOS settings and cause system faults.
- Any change in the file structure as deleting or adding files or directories might cause a system crash.
- Before installing software updates contact DEWETRON or your local distributor. Use only software packages which are released by DEWETRON. Further informations are also available in the internet (<http://www.dewetron.com>).
- After power off the system wait at least 10 seconds before switching the system on again. Otherwise the system may not boot correct. This prolongs also the life of all system components.

Windows updates and antivirus/security software

Before installing Windows software updates consult with DEWETRON for compatibility guidance. Please also keep in mind that the use of any antivirus or other security software may slow down your system and may cause data loss.

Problematic network stacks

Often intrusive IT software or network processes can interfere with the primary function of the DEWETRON system: to record data. Therefore we recommend strongly against the installation of IT/MIS software and running their processes on any DEWETRON data acquisition system, and cannot guarantee the performance of our systems if they are so configured.



Environmental Considerations

Information about the environmental impact of the product.

Product End-of-Life Handling

Observe the following guidelines when recycling a DEWETRON system:

System and Components Recycling

Production of these components required the extraction and use of natural resources. The substances contained in the system could be harmful to your health and to the environment if the system is improperly handled at its end of life! Please recycle this product in an appropriate way to avoid an unnecessary pollution of the environment and to keep natural resources.

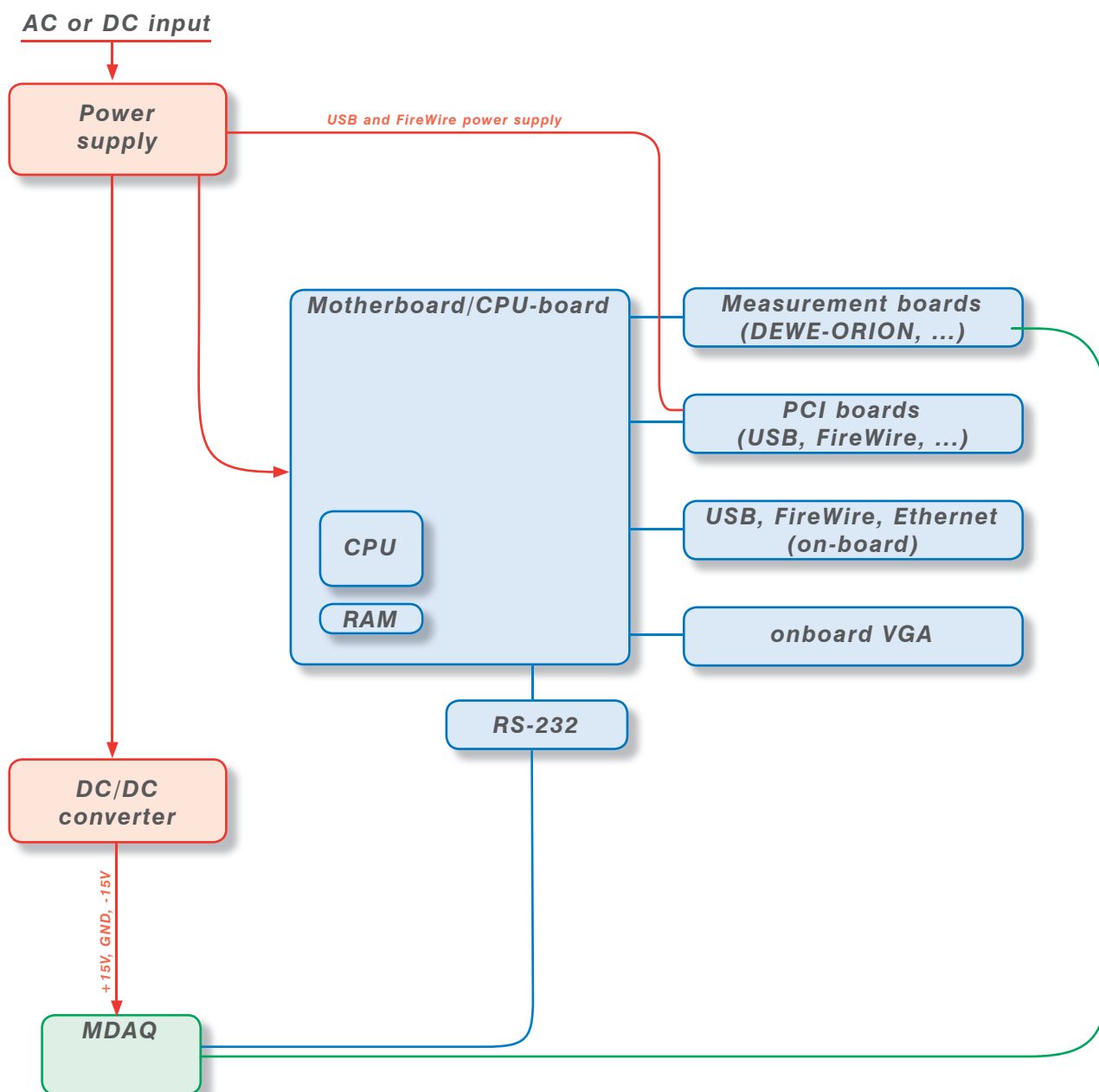
This symbol indicates that this system complies with the European Union's requirements according to Directive 2002/96/EC on waste electrical and electronic equipment (WEEE). Please find further informations about recycling on the DEWETRON web site www.dewetron.com

Restriction of Hazardous Substances

This product has been classified as Monitoring and Control equipment, and is outside the scope of the 2002/95/EC RoHS Directive. This product is known to contain lead.

Signal processing

Blockdiagram of the internal signal processing



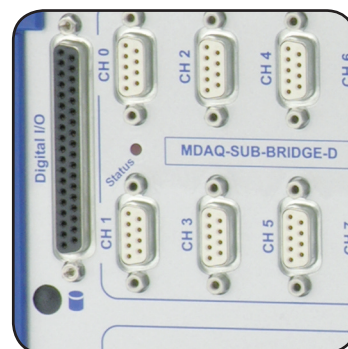
First steps

1



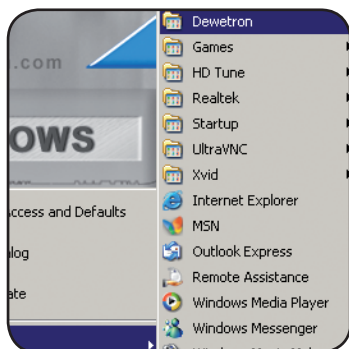
Power-on your system.

2



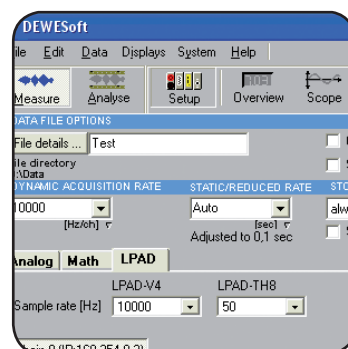
Connect your sensors to the system.

3



Run DEWESoft usually via "Start" > "Programs" > "Dewetron" > "DEWESoft x.x" > "DEWESoft x.x"

4



Start recording your data!

First steps

Notes

DEWE-51-PCI-192

- 192 channel differential voltage amplifier
- Supports up to 13 half size PCI slots
- A/D converter specs: see appendix A
- Wiring to A/D converter: see appendix B
- MDAQ-SUB Modules specs: see MDAQ Manual



System specifications

DEWE-51-PCI-192																
	MDAQ-DIRECT	MDAQ-V-10	MDAQ-V-100	MDAQ-SUB-V-200	MDAQ-SUB-ACC-x	MDAQ-SUB-ACC-A-x	MDAQ-SUB-BRIDGE	MDAQ-SUB-STG	MDAQ-BASE-5	MDAQ-BASE-10	MDAQ-FILT-5-BU	MDAQ-FILT-5-BE	MDAQ-FILT-5-BU-S1	MDAQ-FILT-10	MDAQ-FILT-10-S1	MDAQ-AAF4-5-BU
Channel 0 to 7 Channel 8 to 15	<input type="checkbox"/>	<input type="checkbox"/>	<input type="checkbox"/>	<input type="checkbox"/>	<input type="checkbox"/>	<input type="checkbox"/>	<input type="checkbox"/>	<input type="checkbox"/>	<input type="checkbox"/>	<input type="checkbox"/>	<input type="checkbox"/>	<input type="checkbox"/>	<input type="checkbox"/>	<input type="checkbox"/>	<input type="checkbox"/>	<input type="checkbox"/>
Channel 16 to 23 Channel 24 to 31	<input type="checkbox"/>	<input type="checkbox"/>	<input type="checkbox"/>	<input type="checkbox"/>	<input type="checkbox"/>	<input type="checkbox"/>	<input type="checkbox"/>	<input type="checkbox"/>	<input type="checkbox"/>	<input type="checkbox"/>	<input type="checkbox"/>	<input type="checkbox"/>	<input type="checkbox"/>	<input type="checkbox"/>	<input type="checkbox"/>	<input type="checkbox"/>
Channel 32 to 39 Channel 40 to 47	<input type="checkbox"/>	<input type="checkbox"/>	<input type="checkbox"/>	<input type="checkbox"/>	<input type="checkbox"/>	<input type="checkbox"/>	<input type="checkbox"/>	<input type="checkbox"/>	<input type="checkbox"/>	<input type="checkbox"/>	<input type="checkbox"/>	<input type="checkbox"/>	<input type="checkbox"/>	<input type="checkbox"/>	<input type="checkbox"/>	<input type="checkbox"/>
Channel 48 to 55 Channel 56 to 63	<input type="checkbox"/>	<input type="checkbox"/>	<input type="checkbox"/>	<input type="checkbox"/>	<input type="checkbox"/>	<input type="checkbox"/>	<input type="checkbox"/>	<input type="checkbox"/>	<input type="checkbox"/>	<input type="checkbox"/>	<input type="checkbox"/>	<input type="checkbox"/>	<input type="checkbox"/>	<input type="checkbox"/>	<input type="checkbox"/>	<input type="checkbox"/>
Channel 64 to 71 Channel 72 to 79	<input type="checkbox"/>	<input type="checkbox"/>	<input type="checkbox"/>	<input type="checkbox"/>	<input type="checkbox"/>	<input type="checkbox"/>	<input type="checkbox"/>	<input type="checkbox"/>	<input type="checkbox"/>	<input type="checkbox"/>	<input type="checkbox"/>	<input type="checkbox"/>	<input type="checkbox"/>	<input type="checkbox"/>	<input type="checkbox"/>	<input type="checkbox"/>
Channel 80 to 87 Channel 88 to 95	<input type="checkbox"/>	<input type="checkbox"/>	<input type="checkbox"/>	<input type="checkbox"/>	<input type="checkbox"/>	<input type="checkbox"/>	<input type="checkbox"/>	<input type="checkbox"/>	<input type="checkbox"/>	<input type="checkbox"/>	<input type="checkbox"/>	<input type="checkbox"/>	<input type="checkbox"/>	<input type="checkbox"/>	<input type="checkbox"/>	<input type="checkbox"/>
Channel 96 to 103 Channel 104 to 111	<input type="checkbox"/>	<input type="checkbox"/>	<input type="checkbox"/>	<input type="checkbox"/>	<input type="checkbox"/>	<input type="checkbox"/>	<input type="checkbox"/>	<input type="checkbox"/>	<input type="checkbox"/>	<input type="checkbox"/>	<input type="checkbox"/>	<input type="checkbox"/>	<input type="checkbox"/>	<input type="checkbox"/>	<input type="checkbox"/>	<input type="checkbox"/>
Channel 112 to 119 Channel 120 to 127	<input type="checkbox"/>	<input type="checkbox"/>	<input type="checkbox"/>	<input type="checkbox"/>	<input type="checkbox"/>	<input type="checkbox"/>	<input type="checkbox"/>	<input type="checkbox"/>	<input type="checkbox"/>	<input type="checkbox"/>	<input type="checkbox"/>	<input type="checkbox"/>	<input type="checkbox"/>	<input type="checkbox"/>	<input type="checkbox"/>	<input type="checkbox"/>
Channel 128 to 135 Channel 136 to 143	<input type="checkbox"/>	<input type="checkbox"/>	<input type="checkbox"/>	<input type="checkbox"/>	<input type="checkbox"/>	<input type="checkbox"/>	<input type="checkbox"/>	<input type="checkbox"/>	<input type="checkbox"/>	<input type="checkbox"/>	<input type="checkbox"/>	<input type="checkbox"/>	<input type="checkbox"/>	<input type="checkbox"/>	<input type="checkbox"/>	<input type="checkbox"/>
Channel 144 to 151 Channel 152 to 159	<input type="checkbox"/>	<input type="checkbox"/>	<input type="checkbox"/>	<input type="checkbox"/>	<input type="checkbox"/>	<input type="checkbox"/>	<input type="checkbox"/>	<input type="checkbox"/>	<input type="checkbox"/>	<input type="checkbox"/>	<input type="checkbox"/>	<input type="checkbox"/>	<input type="checkbox"/>	<input type="checkbox"/>	<input type="checkbox"/>	<input type="checkbox"/>
Channel 160 to 167 Channel 168 to 175	<input type="checkbox"/>	<input type="checkbox"/>	<input type="checkbox"/>	<input type="checkbox"/>	<input type="checkbox"/>	<input type="checkbox"/>	<input type="checkbox"/>	<input type="checkbox"/>	<input type="checkbox"/>	<input type="checkbox"/>	<input type="checkbox"/>	<input type="checkbox"/>	<input type="checkbox"/>	<input type="checkbox"/>	<input type="checkbox"/>	<input type="checkbox"/>
Channel 176 to 183 Channel 184 to 191	<input type="checkbox"/>	<input type="checkbox"/>	<input type="checkbox"/>	<input type="checkbox"/>	<input type="checkbox"/>	<input type="checkbox"/>	<input type="checkbox"/>	<input type="checkbox"/>	<input type="checkbox"/>	<input type="checkbox"/>	<input type="checkbox"/>	<input type="checkbox"/>	<input type="checkbox"/>	<input type="checkbox"/>	<input type="checkbox"/>	<input type="checkbox"/>

continued on next page

Main System

continued from page 17

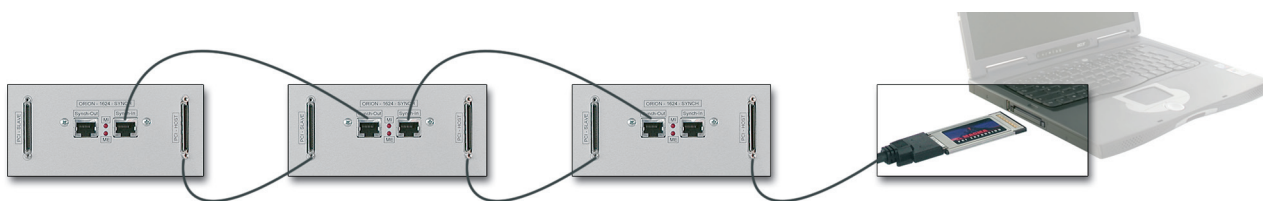
A/D converter interface:	<input type="checkbox"/> PCI-BRIDGE <input type="checkbox"/> PCMCIA (cable 1 m) <input type="checkbox"/> Express card 34 <input type="checkbox"/> Express card 54												
Power supply:	<input type="checkbox"/> 90 to 260 VAC (400 W BEA-640) <input type="checkbox"/> 9 to 18 VDC (250 W APT-DX250H) <input type="checkbox"/> 19 to 36 VDC (300 W APT-DY300HEW) others on request												
Interface:	<input type="checkbox"/> RS-232 <input type="checkbox"/> RS-485												
Operating temperature:	0 °C to 50 °C (standard)												
Storage temperature:	-20 °C to +60 °C												
Humidity (operating):	10 % to 80 %, non condensing 5 % to 95 %, rel. humidity												
Vibration test*: EN 60068-2-6	<table> <tr> <td>Shape</td> <td>Sine</td> </tr> <tr> <td>Frequency range</td> <td>10 - 150 Hz</td> </tr> <tr> <td>Acceleration</td> <td>2 g</td> </tr> <tr> <td>Sweep rate</td> <td>1 oct./min.</td> </tr> <tr> <td>Duration</td> <td>20 Cycles</td> </tr> <tr> <td>Test in 3 directions</td> <td></td> </tr> </table>	Shape	Sine	Frequency range	10 - 150 Hz	Acceleration	2 g	Sweep rate	1 oct./min.	Duration	20 Cycles	Test in 3 directions	
Shape	Sine												
Frequency range	10 - 150 Hz												
Acceleration	2 g												
Sweep rate	1 oct./min.												
Duration	20 Cycles												
Test in 3 directions													
Vibration test*: EN 60721-3-2 Class 2M2	<table> <tr> <td>Shape</td> <td>Random</td> </tr> <tr> <td>Frequency range</td> <td>10 - 200 Hz</td> </tr> <tr> <td>Power spectral density</td> <td>1 m/s² / Hz from 10 – 200 Hz</td> </tr> <tr> <td>Duration</td> <td>30 Minutes per axis</td> </tr> </table>	Shape	Random	Frequency range	10 - 200 Hz	Power spectral density	1 m/s ² / Hz from 10 – 200 Hz	Duration	30 Minutes per axis				
Shape	Random												
Frequency range	10 - 200 Hz												
Power spectral density	1 m/s ² / Hz from 10 – 200 Hz												
Duration	30 Minutes per axis												
Shocktests*: EN 60068-2-27	<table> <tr> <td>Shape</td> <td>Half-sine</td> </tr> <tr> <td>Acceleration amplitude</td> <td>15 g</td> </tr> <tr> <td>Duration</td> <td>11 ms</td> </tr> <tr> <td>Test in 3 axis, 3 shocks in each axis and direction</td> <td></td> </tr> </table>	Shape	Half-sine	Acceleration amplitude	15 g	Duration	11 ms	Test in 3 axis, 3 shocks in each axis and direction					
Shape	Half-sine												
Acceleration amplitude	15 g												
Duration	11 ms												
Test in 3 axis, 3 shocks in each axis and direction													
Dimensions (W x D x H):	approx. 438.5 x 308 x 443.7 mm (17.2 x 12.1 x 17.5 in.) with MK option (10U 19" mounting rack): 481.6 x 336 x 443.7 mm (19 x 13.2 x 17.5 in.)												
Weight:	typ. 19 kg (41.88 lbs), depending on configuration												
*) tested with SSD disc.													

PCI-Bridge connector

Like all DEWE-51-PCI-xx and DEWE-50-PCI-xx systems the DEWE-51-PCI-192 is using PCI-to-PCI-Bridge technology as basic structure. This technique allows to expand the internal data bus of a PC or add a PCI-Bus to systems like notebooks. In addition to this also a separation between the noisy PC environment and the high sensitive signal conditioning and digitising of the analog values increases the whole system quality. Since this PCI-to-PCI-Bridges are completely transparent there are no necessary changes, from the software point of view, to operate the DEWE-51-PCI-xx and DEWE-50-PCI-xx systems. The host PC “thinks” all the PCI-Boards are installed inside the PC directly.

PCI BRIDGE and Cascading (option -CS) connector

The PCI-HOST connector is usually connected to the PCI expansion connector of the Notebook (PCMCIA card) or DESKTOP PC (PCI card). Installing multiple DEWE-50-PCI-xx or DEWE-51-PCI-xx, the PCI-SLAVE connector can be connected in daisy chain manner to the PCI-HOST connector of the neighbor system.



ORION-DSA SYNC connector (option)

The Cascading option allows to expand the number of PCI slots for installing multiple boards. But this cascading does not guarantee the time synchronisation between the sub systems. Having ORI-ON-1624 installed in the DEWE-51-PCI-192 this synchronisation can be realised by expanding the ORI-ON-1624 synchronisation bus. Connecting multiple systems can simply be done with daisy chaining similar like cascading the PCI bus.

With two LED's the configuration of the subsystems is indicated: The LED ME is on, if a right configured master system is connected at the Synch-IN-connector. The LED MI is on, if the DEWE-51-PCI-192 is configured to master.

Software installation

Installing single DEWE-51-PCI-192

The DEWE-51-PCI-192 is based on PCI to PCI bridge systems. It offers the expansion of the internal PCI slots of the DEWE-2010, DEWE-3020, DEWE-4010 or DEWE-5000 series or adds PCI slots to notebooks. Since the PCI bus is a basic system component of any PC, the PCI to PCI bridge has neither Plug and Play nor hot swap capabilities. Therefore the driver installation is different to standard PCI-board installation or adding USB devices to your PC. In general following rules have to be considered during the software installation of the DEWE-51-PCI-192:

In the first step the additional PCI slots have to be recognized from your system, than the drivers for additional hardware can be installed.

The following basic steps lead you through the installation process. Be aware that there are differences related to the operating system (WinXP or Win2000), the service pack and system drivers. For detailed information please refer to the MAGMA manual which is also shipped with your system.

Main System

- Ensure power is turned off to all electronic devices prior to performing any maintenance or upgrades and installations.
- Following anti-static procedures in ALL steps!
- Insert the PCMCIA card (or the PCI Expansion Host Interface to the desktop PC)
- Connect the cable to both PCMCIA (or PCI) card and DEWE-51-PCI-192
- Plug in the DEWE-51-PCI-192 power cord
- Power on the DEWE-51-PCI-192
- Power on the Notebook (or PC)

Depending on the system – as described above – the first start may be different.

Usual procedure:

- The Notebook (or PC) will find a PCI-to-PCI bridge
- Install the hardware driver by clicking 3 times <next> at the Windows hardware install wizard until reboot is prompted
- Reboot your system
- Run <setup.exe> from the DEWETRON-SYSTEM DVD at directory <E:\Install\Drivers\X_Various\MAGMA\Mobility Express Card> and follow the installation instructions prompted to install the PCI expansion
- Shut down your complete system (include DEWE-51-PCI-192)
- Turn on your system again (first DEWE-51-PCI-192 followed by the Notebook or PC)
- Again one additional PCI-to-PCI bridge will be found
- Install the hardware driver but use the SYSTEM-DVD as location for the driver
- Reboot your system again
- Now the Notebook (or PC) will find the hardware devices installed in the DEWE-51-PCI-192 (please refer below for usual hardware installing process).

It may happen that on the very first start already the PCI-hardware installed in the DEWE-51-PCI-192 is found without running <setup.exe> from the SYSTEM-DVD. Please do not install any of these hardware drivers without running <setup.exe> from SYSTEM-DVD. Try to do exact the steps described above. When the system prompt to install any hardware drivers before the above steps are not complete done please click <cancel> at the hardware driver install wizard. This will guarantee a well working system.

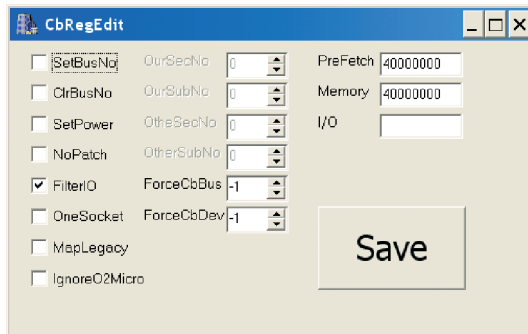
Installing multiple DEWE-51-PCI-xx or DEWE-50-PCI-xx

If several DEWETRON-systems are connected to the PC please connect at first just one DEWE-51-PCI-xx or DEWE-50-PCI-xx to the host computer. If the installation of the first system is finished continue with connecting all other expansion systems step by step to the host PC. The installation of additional DEWETRON-systems is similar to the other installing process: First of all install the PCI-Bridge and in the next step the hardware driver of the installed boards. The only difference to the installation of the first system is that the MAGMA driver don't have to be installed again.

Depending on the hardware configuration of the notebook it may happen, that the notebook does not start anymore as soon the second or the third DEWE-51-PCI-xx or DEWE-50-PCI-xx is connected. The reason of that is that the device manager of the operating system (usual W2K or WXP) will not automatically reserve the needed memory range. In this case this has to be done manually:

NOTE: Before performing this task, verify that the Magma Driver is installed. Go to add/remove programs and look for "Magma Cardbus Expansion Driver", if so - the driver is installed.

- Disconnect DEWE-51-PCI-xx or DEWE-50-PCI-xx from your notebook by ejecting the card bus card
- Reboot your system
- Go to your local disk drive and look for \C:\Programfiles\Magma\CBREGEDIT.EXE
- RUN CBREGEDIT.EXE and check Filter I/O
- Type in 20000000 in “Memory” and “Prefetch”



- Click “Save” and shutdown your notebook
- Connect the DEWE-51-PCI-xx or DEWE-50-PCI-xx unit to your Notebook. Reboot your system again and install the hardware driver
- Reboot your system again and install the hardware driver
- With the same procedure, connect step by step all your DEWE-51-PCI-xx or DEWE-50-PCI-xx to your system
- If your system hangs after adding the last chassis, run CBregedit.exe and change the values from 20000000 to 40000000 on Prefetch and Memory. Don't forget to enable the FilterIO by placing a checkmark into the “FilterIO” box

Installing the PCI-board hardware driver

The hardware installation procedure depends on the installed hardware in the DEWE-51-PCI-xx and the DEWE-50-PCI-xx.

- In case of NI card please abort the process and then insert the NI-DAQ CD to install the drivers. Please follow the installation instructions of the NI-DAQ setup program.
- In case of ORION-1624 card please insert the DEWE-System CD and select the location: <E:\Install\Drivers\DAQBoards\Dewetron\OrionDSA>
- For other hardware please refer to the manufacturers installation instruction. The table beyond shows the installed PCI-Boards in the DEWE-50-PCI-xx or DEWE-51-PCI-xx and also the DVD name of the driver location

Installing DEWESoft

It is recommended to install all necessary drivers prior to installing DEWESoft, as DEWESoft will need to see the drivers and Orion cards present in order for the registration code to al-

Main System

low the software to function. Install DEWESoft, using the DEWETRON SYSTEM-DVD. Locate the license key sheet provided by DEWETRON and be prepared to enter your license key into the field when DEWETRON runs for the first time. All of the hardware must be connected and properly working in order for this process to work, because DEWESoft compares the license to some values received from hardware within the DEWE-51-PCI-xx or DEWE-50-PCI-xx.

Used PCI boards and driver location

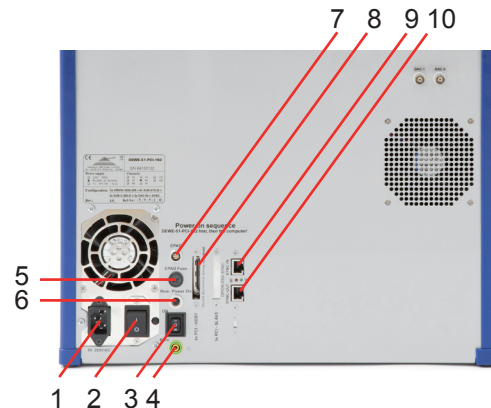
Slot	PCI board	Driver location
1		
2		
3		
4		
5		
6		
7		
8		
9		
10		
11		
12		
13		
14		

Installing DEWESoft

It is recommended to install all necessary drivers prior to installing DEWESoft, as DEWESoft will need to see the drivers and Orion cards present in order for the registration code to allow the software to function. Install DEWESoft, using the DEWETRON SYSTEM-DVD. Locate the license key sheet provided by DEWETRON and be prepared to enter your license key into the field when DEWETRON runs for the first time. All of the hardware must be connected and properly working in order for this process to work, because DEWESoft compares the license to some values received from hardware within the DEWE-51-PCI-xx or DEWE-50-PCI-xx.

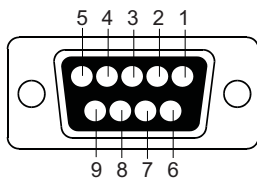
Connectors

- 1 Power supply connector
- 2 Main power switch
- 3 Remote power switch / Power on
- 4 Ground connector
- 5 Fuse
- 6 Remote power connector
- 7 EPAD connector interface
- 8 PCI-Bridge connector
- 9 SYNC-IN connector
- 10 SYNC-OUT connector



RS-232 interface connector (option)

The RS-232 interface connector (female) meets standard pin assignment.



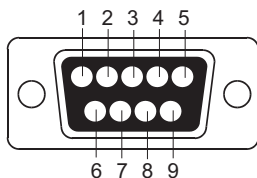
9-pin SUB-D connector (female)

Pin assignment

- 2: RD (Received Data)
 - 3: TD (Transmitted Data)
 - 5: GND (Ground)
- the remaining pins are not connected

Communication interface connector (option with com interface card)

The RS-232 interface connector (male) meets standard pin assignment.



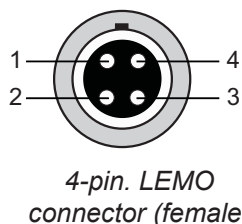
9-pin SUB-D connector (male)

Pin assignment

- 1: DCD (Data Carrier Detector)
- 2: RD (Received Data)
- 3: TD (Transmitted Data)
- 4: DTR (Data Terminal Ready)
- 5: GND (Ground)
- 6: DSR (Data Set Ready)
- 7: RTS (Request To Send)
- 8: CTS (Clear To Send)
- 9: RI (Ring Indicator)

EPAD interface connector (standard)

The EPAD interface connector is prepared to communicate with additional EPAD modules and to supply them.



4-pin. LEMO connector (female)

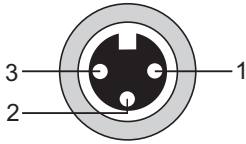
Pin assignment

- 1: RS-485 A
 - 2: RS-485 B
 - 3: +12 V
 - 4: GND
- Shield is connected on housing

Main System

Remote power connector

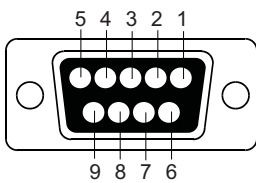
In combination with a Desktop-PC it is possible to switch on the DEWE-50-PCI-192 automatically with the PC. This can be done with a control voltage input which is connected to the power supply of the host PC. Switch the Power on / power remote switch to position "remote".



Pin assignment
 1: + 5 V_{DC} input
 2: GND
 3: not connected

3-pin Binder 712 series connector (female)

Mount the PCI slot cover at your Desktop-PC and connect it with the internal power supply of your PC.



Pin assignment
 2: + 5 V_{DC} output
 5: GND
 the remaining pins are not connected



PCI slot cover

9-pin SUB-D connector (female)

Ground connector

For some kind of measurements, it's necessary to give the system an additional ground connection.

Power supply connector

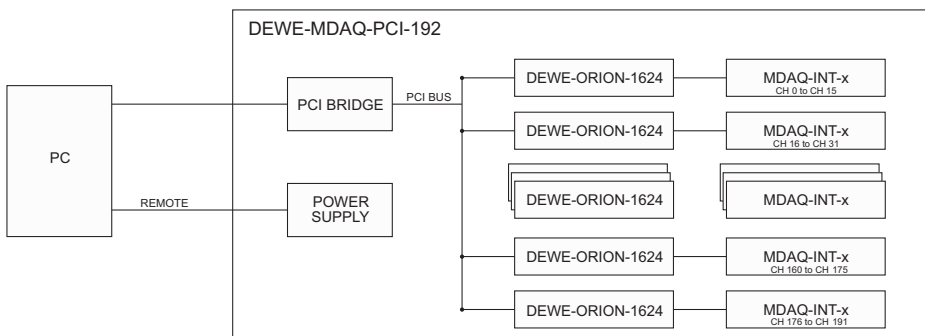
Supply voltage for the DEWE-51-PCI-192 should be within 100 VAC to 240 VAC.

Main power switch

The main power switch is used to power on / off the system.

Internal signal processing

The block diagram below shows the internal signal processing with DEWE-ORION A/D cards. DEWE-ORION cards have a RS-485 interface included. So you dont need an additional RS-232 PCI card.

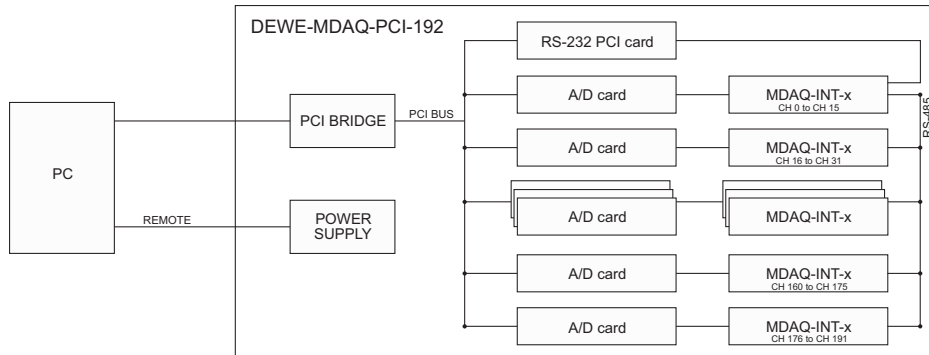


Please select "use onboard RS-485" in hardware setup screen to get access to the modules.

ID	Name	Sample rate	All channels	AI
0	ORION-1624E	200000	16	24
1	ORION-1624E	200000	16	24

Internal signal processing with standard A/D cards

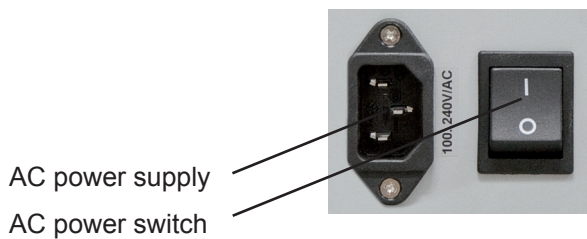
The block diagram below shows the internal signal processing with standard A/D cards.



Power supply

AC power supply

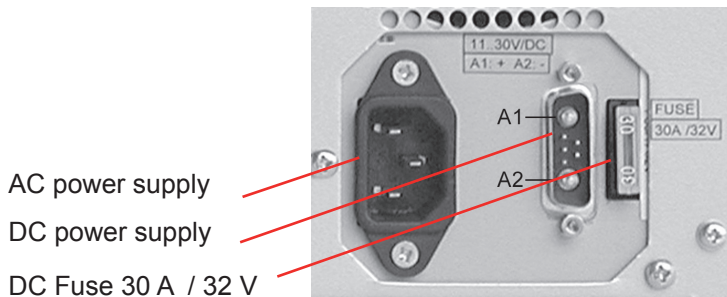
400 W AC power supply BEA-640	
Input:	
Input range:	100 to 240 V _{AC} (active PFC)
Input frequency:	47 to 63 Hz
Max. input current:	7 A (115 V _{AC}), 3.5 A (230 V _{AC})
Output:	
Output power:	400 W continuous
Output voltages:	+3.3 V (max. 28 A)
	+5 V (max. 35 A) -5 V (max. 0.5 A)
	+5 Vsb (max. 2 A)
	+12 V (max. 30 A) -12 V (max. 0.8 A)



Main System

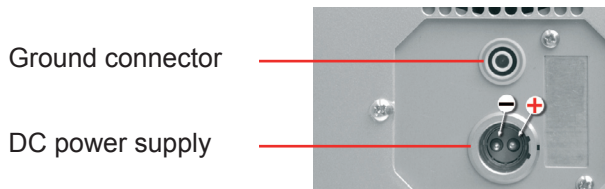
AC and DC input power supply

200 W dual power supply	MPS1058-100
Input:	
Input range:	90 to 260 V _{AC} (auto selecting) 11 to 30 V _{DC}
Input frequency:	47 to 63 Hz or DC
Max. input current:	4 A (110 V _{AC}), 2 A (230 V _{AC}), 30 A @ DC
Output:	
Output power:	200 W @ AC and DC > 18 V DC 18 to 11 V derate 7 W / V
Output voltages:	+3.3 V (max. 15 A) +5 V (max. 25 A) -5 V (max. 0.5 A) +5 Vsb (max. 0.75 A) +12 V (max. 10 A) -12 V (max. 0.8 A)



DC power supply

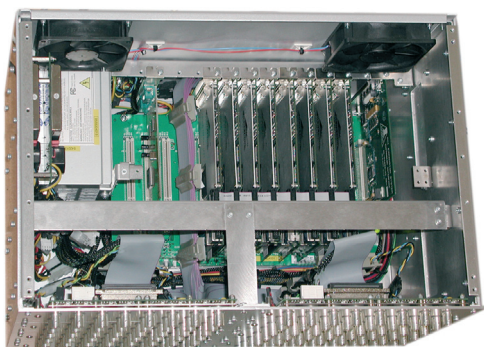
250 W DC power supply	APT-DX250H
Input:	
Input range:	9 to 18 V _{DC} (12 V _{DC} nom.)
Input frequency:	DC
Max. input current:	50 A
Output:	
Output power:	250 W
Output voltages:	+3.3 V (max. 14 A) +5 V (max. 25 A, min. 3 A, peak 30 A) -5 V (max. 1 A) +5 Vsb (max. 1 A, peak 1.5 A) +12 V (max. 10 A, min. 1 A, peak 12 A) -12 V (max. 2 A)



DC power supply

300 W DC power supply		APT-DY300HEW	
Input:			
Input range:	18 to 36 V _{DC} (24 V _{DC} nom.)		
Input frequency:	DC		
Max. input current:	25 A		
Output:			
Output power:	300 W		
Output voltages:	+3.3 V (max. 28 A)		
	+5 V (max. 30 A, min. 3 A, peak 35 A)		-5 V (max. 1 A)
	+5 V _{sb} (max. 1.5 A)		
	+12 V (max. 12 A, min. 1 A, peak 15 A)		-12 V (max. 2 A)

Adding or exchanging PCI-Boards



Before opening the instrument (experts only) disconnect power!

For installing additional PCI-hardware remove the top cover of the DEWE-51-PCI-128. The fixture of additional PCI-boards is similar like a standard desktop PC system. The DEWE-51-PCI-128 accepts in total 13 half size PCI-boards.

Main System

Notes

A/D & D/A Conversion

A/D Conversion

Please find information about the A/D conversion in the attached DEWE-ORION series manual. The latest version of the manual can be downloaded from:

<http://download.dewetron.com/dl/components/adboards>

Informations regarding different manufacturer's see the corresponding D/A card manual.

A/D & D/A Conversion

Notes

Internal Wiring

Please find information about the MDAQ amplifiers in the attached DEWE-MDAQ series manual. The latest version of the manual can be downloaded from:

<http://download.dewetron.com/dl/products/signal/mdaq>

Internal Wiring

Notes

CE-Certificate of conformity



Manufacturer:

DEWETRON Elektronische Messgeraete Ges.m.b.H.

Address:

**Parkring 4
A-8074 Graz-Grambach Austria**

Tel.: +43 316 3070 0

Fax: +43 316 3070 90

e-mail: sales@dewetron.com

http://www.dewetron.com

Name of product:

DEWE-51-PCI-192

Kind of product:

Data acquisition instrument

The product meets the regulations of the following EC-directives:

73/23/EEC

"Directive on the approximation of the laws of the Member States relating to electrical equipment designed for use within certain voltage limits amended by the directive 93/68/EEC"

89/336/EEC

"Directive on the approximation of the laws of the Member States relating to electromagnetic compatibility amended by the directives 91/263/EEC, 92/31/EEC, 93/68/EEC and 93/97/EEC"

The accordance is proved by the observance of the following standards:

L V E M C	Safety	IEC/EN 61010-1:1992/93 IEC/EN 61010-2-031	IEC 61010-1:1992/300 V CATIII PoI. D. 2 IEC 1010-2-031
	Emissions	EN 61000-6-4	EN 55011 Class B
	Immunity	EN 61000-6-2	Group standard

Graz, October 14, 2008

Place / Date of the CE-marking

Dipl.-Ing. Roland Jeutter / Managing director

Notes
