



Automotive  
Energy & Power Analysis  
Aerospace & Defense  
Transportation  
General Test & Measurement

# DEWE-50-PCI-32

*Technical reference manual*



Re-inventing Data Acquisition



Copyright © DEWETRON elektronische Messgeraete Ges.m.b.H.

This document contains information which is protected by copyright. All rights are reserved. Reproduction, adaptation, or translation without prior written permission is prohibited, except as allowed under the copyright laws.

All trademarks and registered trademarks are acknowledged to be the property of their owners.

## Thank you!

Thank you very much for your investment in DEWETRON's unique data acquisition systems. These are top-quality instruments which are designed to provide you years of reliable service. This guide has been prepared to help you get the most from your investment, starting from the day you take it out of the box, and extending for years into the future.

This guide includes important startup notes, as well as safety notes and information about keeping your DEWETRON system in good working condition over time.

We strongly suggest that you read this entire manual, especially the safety and care sections, as well as to avoid damaging your DEWETRON system.

## What is the DEWE-50-PCI-32?

This product is used for measuring of different physical and/or electrical sizes (depending on model or configuration). The connection is depending on model or configuration and takes place via safety banana plugs, BNC connectors ( $\pm 50V$  max.), D-SUB connectors ( $\pm 50V$  max.), thermocouple connectors ( $\pm 50V$  max.), BINDER® connectors ( $\pm 50V$  max.) or LEMO® connectors.

# Preface

---

Notes

## Content

|   |           |
|---|-----------|
| <b>General Information, Safety Instructions</b>                   | <b>7</b>  |
| Training .....  | 7         |
| Calibration.....  | 7         |
| Support .....   | 7         |
| Service/repairs .....   | 7         |
| Warranty Information .....  | 8         |
| Printing History.....   | 8         |
| Safety symbols in the manual .....                                | 9         |
| General safety and hazard warnings for all DEWETRON systems ..... | 10        |
| Windows updates and antivirus/security software .....             | 13        |
| Problematic network stacks .....                                  | 13        |
| Environmental Considerations .....                                | 13        |
| Blockdiagram of the internal signal processing .....              | 14        |
| First steps .....   | 15        |
| <b>Main System</b>  | <b>17</b> |
| DEWE-50-PCI-32 .....  | 17        |
| System specifications .....                                       | 17        |
| Cleaning the filter pad.....                                      | 20        |
| Connectors .....  | 21        |
| Adding or exchanging PCI boards .....                             | 24        |
| Synchronisation of DAQP-CFB modules (optional) .....              | 25        |
| <b>Software</b>   | <b>27</b> |
| DEWESoft.....   | 27        |
| <b>A/D Conversion</b>   | <b>A1</b> |
| <b>Internal Wiring</b>  | <b>B1</b> |
| <b>CE-Certificate of conformity</b>                               | <b>C1</b> |

# Table of content

---

## Training

DEWETRON offers training at various offices around the world several times each year. DEWETRON headquarters in Austria have a very large and professional conference and seminar center, where training classes are conducted on a regular basis starting with sensors and signal conditioning, A/D technology and software operation. For more information about training services, please visit:  
<http://www.dewetron.com/support/training>

Dewetron Inc. in the USA also has a dedicated training facility connected to its headquarters, located in Rhode Island. For more information about training services in the US, please visit:  
<http://www.dewamerica.com/support/training>

## Calibration

Every instrument needs to be calibrated at regular intervals. The standard norm across nearly every industry is annual calibration. Before your DEWETRON data acquisition system is delivered, it is calibrated at our DEWETRON headquarter. Each of this system is delivered with a certificate of compliance with our published specifications. Detailed calibration reports from our calibration system are available for purchase with each order. We retain them for at least one year, so calibration reports can be purchased for up to one year after your system was delivered.

## Support

DEWETRON has a team of people ready to assist you if you have any questions or any technical difficulties regarding the system. For any support please contact your local distributor first or DEWETRON directly.

For Asia and Europe, please contact:

DEWETRON Ges.m.b.H.  
Parkring 4  
A-8074 Graz-Grambach  
AUSTRIA  
Tel.: +43 316 3070  
Fax: +43 316 307090  
Email: [support@dewetron.com](mailto:support@dewetron.com)  
Web: <http://www.dewetron.com>

The telephone hotline is available  
Monday to Friday between  
08:00 and 17:00 CET (GMT +1:00)

## Service/repairs

The Team of DEWETRON also performs any kinds of repairs to your system to assure a safe and proper operation in future. For information regarding service and repairs please contact your local distributor first or DEWETRON directly.

For the Americas, please contact:

DEWETRON, Inc.  
10 High Street, Suite K  
Wakefield, RI 02879  
U.S.A.  
Tel.: +1 401 284 3750  
Toll-free: +1 877 431 5166  
Fax: +1 401 284 3755  
Email: [support@dewamerica.com](mailto:support@dewamerica.com)  
Web: <http://www.dewamerica.com>

The telephone hotline is available  
Monday to Friday between  
08:00 and 17:00 GST (GMT -5:00)

# Notice

---

The information contained in this document is subject to change without notice.

DEWETRON elektronische Messgeraete Ges.m.b.H. (DEWETRON) shall not be liable for any errors contained in this document. DEWETRON MAKES NO WARRANTIES OF ANY KIND WITH REGARD TO THIS DOCUMENT, WHETHER EXPRESS OR IMPLIED. DEWETRON SPECIFICALLY DISCLAIMS THE IMPLIED WARRANTIES OF MERCHANTABILITY AND FITNESS FOR A PARTICULAR PURPOSE. DEWETRON shall not be liable for any direct, indirect, special, incidental, or consequential damages, whether based on contract, tort, or any other legal theory, in connection with the furnishing of this document or the use of the information in this document.

## Warranty Information

A copy of the specific warranty terms applicable to your DEWETRON product and replacement parts can be obtained from your local sales and service office.

## Restricted Rights Legend

Use austrian law for duplication or disclosure.

DEWETRON GesmbH  
Parkring 4  
A-8074 Graz-Grambach / Austria

## Printing History

Please refer to the page bottom for printing version.

Copyright © DEWETRON elektronische Messgeraete Ges.m.b.H.

This document contains information which is protected by copyright. All rights are reserved. Reproduction, adaptation, or translation without prior written permission is prohibited, except as allowed under the copyright laws.

All trademarks and registered trademarks are acknowledged to be the property of their owners.

# Safety instructions

---

## Safety symbols in the manual

---



*Indicates hazardous voltages.*

---

**WARNING** *Calls attention to a procedure, practice, or condition that could cause bodily injury or death.*

---

**CAUTION** *Calls attention to a procedure, practice, or condition that could possibly cause damage to equipment or permanent loss of data.*

---

### **WARNINGS**

*The following general safety precautions must be observed during all phases of operation, service, and repair of this product. Failure to comply with these precautions or with specific warnings elsewhere in this manual violates safety standards of design, manufacture, and intended use of the product. DEWETRON Elektronische Messgeraete Ges.m.b.H. assumes no liability for the customer's failure to comply with these requirements.*

---

**All accessories shown in this document are available as option and will not be shipped as standard parts.**



*For safety reasons max. 50 V may be applied to the BNC input-connectors!  
Refer to the regulation of maximum allowable touch potential.*

---

# Safety instructions

---

**Your safety is our primary concern! Please be safe!**

## **General safety and hazard warnings for all DEWETRON systems**

- Use this system under the terms of the specifications only to avoid any possible danger.
- Maintenance will be executed by qualified staff only.
- During the use of the system, it might be possible to access another parts of a more comprehensive system. Please read and follow the safety instructions provided in the manuals of all other components regarding warning and security advices for using the system.
- With this product, only use the power cable delivered or defined for the host country.
- DO NOT connect or disconnect sensors, probes or test leads, as these parts are connected to a voltage supply unit.
- The system is grounded via a protective conductor in the power supply cord. To avoid electric shocks, the protective conductor has to be connected with the ground of the power network. Before connecting the input or output connectors of the system, make sure that there is a proper grounding to guarantee potential free usage. For countries, in which there is no proper grounding, please refer to your local legally safety regulations for safety use.

DC systems: Every DC system has a grounding connected to the chassis (yellow/green safety banana plug).

- Please note the characteristics and indicators on the system to avoid fire or electric shocks. Before connecting the system, please carefully read the corresponding specifications in the product manual.
- The inputs are not, unless otherwise noted (CATx identification), for connecting to the main circuit of category II, III and IV.
- The power cord separates the system from the power supply. Do not block the power cord, since it has to be accessible for the users.
- DO NOT use the system if equipment covers or shields are removed.
- If you assume the system is damaged, get it examined by authorised personnel only.
- Any use in wet rooms, outdoors or in adverse environmental condition is not allowed!  
Adverse environmental conditions are:
  - Moisture or high humidity
  - Dust, flammable gases, fumes or dissolver
  - Thunderstorm or thunderstorm conditions (except assembly PNA)
  - Electrostatic fields, et cetera.
- The measurement category can be adjusted depending on module configuration.
- Any direct voltage output is protected with a fuse against short cut and reverse-polarity, but is NOT galvanically isolated (except it is explicit marked on the system).
- The system must be connected and operated to an earthed wall socket at the AC mains power supply only (except for DC systems).
- Any other use than described above may damage your system and is attended with dangers like shortcut, fire or electric shocks.
- The whole system must not be changed, rebuilt or opened (except for changing DAQ, DAQP, PAD modules).

# Safety instructions

- If you assume a more riskless use is not provided anymore, the system has to be rendered inoperative and should be protected against inadvertent operation. It is assumed that a more riskless operation is not possible anymore, if
    - the system is damaged obviously or causes strange noises.
    - the system does not work anymore.
    - the system has been exposed to long storage in adverse environmental.
    - the system has been exposed to heavy shipment strain.
  - DO NOT touch any exposed connectors or components if they are live wired. The use of metal bare wires is not allowed. There is a risk of short cut and fire hazard!
  - Warranty void if damages caused by disregarding this manual. For consequential damages NO liability will be assumed!
  - Warranty void if damages to property or persons caused by improper use or disregarding the safety instructions.
  - Unauthorized changing or rebuilding the system is prohibited due to safety and permission reasons (CE). Exception: changing modules like DAQ, DAQP or PAD.
  - The assembly of the system is equivalent to protection class I. For power supply, only the correct power socket of the public power supply must be used, except the system is DC powered.
  - Be careful with voltages >25 VAC or >35 VDC! These voltages are already high enough in order to get a perilous electric shock by touching the wiring.
  - The product heats during operation. Make sure there is adequate ventilation. Ventilation slots must not be covered!
  - Only fuses of the specified type and nominal current may be used. The use of patched fuses is prohibited.
  - Prevent using metal bare wires! Risk of short cut and fire hazard!
  - DO NOT use the system before, during or shortly after a thunderstorm (risk of lightning and high energy overvoltage). An advanced range of application under certain conditions is allowed with therefore designed products only. For details please refer to the specifications.
  - Make sure that your hands, shoes, clothes, the floor, the system or measuring leads, integrated circuits and so on, are dry.
  - DO NOT use the system in rooms with flammable gases, fumes or dust or in adverse environmental conditions.
  - Avoid operation in the immediate vicinity of:
    - high magnetic or electromagnetic fields
    - transmitting antennas or high-frequency generators
- For exact values please refer to enclosed specifications.
- Use measurement leads or measurement accessories aligned to the specification of the system only. Fire hazard in case of overload!
  - Do not switch on the system after transporting it from a cold into a warm room and vice versa. The thereby created condensation may damage your system. Acclimatise the system unpowered to room temperature.
  - Do not disassemble the system! There is a high risk of getting a perilous electric shock. Capacitors still might be charged, even the system has been removed from the power supply.
  - The electrical installations and equipments in industrial facilities must be observed by the security regulations and insurance institutions.

# Safety instructions

---

- The use of the measuring system in schools and other training facilities must be observed by skilled personnel.
- The measuring systems are not designed for use at humans and animals.
- Please contact a professional if you have doubts about the method of operation, safety or the connection of the system.
- Please be careful with the product. Shocks, hits and dropping it from already lower level may damage your system. For exact values please refer to enclosed specifications.
- Please also consider the detailed technical reference manual as well as the security advices of the connected systems.

This product has left the factory in safety-related flawless and proper condition.

In order to maintain this condition and guarantee safety use, the user has to consider the security advices and warnings in this manual.

EN 61326-3-1:2008

IEC 61326-1 applies to this part of IEC 61326 but is limited to systems and equipment for industrial applications intended to perform safety functions as defined in IEC 61508 with SIL 1-3.

The electromagnetic environments encompassed by this product family standard are industrial, both indoor and outdoor, as described for industrial locations in IEC 61000-6-2 or defined in 3.7 of IEC 61326-1. Equipment and systems intended for use in other electromagnetic environments, for example, in the process industry or in environments with potentially explosive atmospheres, are excluded from the scope of this product family standard, IEC 61326-3-1.

Devices and systems according to IEC 61508 or IEC 61511 which are considered as “operationally well-tried”, are excluded from the scope of IEC 61326-3-1.

Fire-alarm and safety-alarm systems, intended for protection of buildings, are excluded from the scope of IEC 61326-3-1.

## **CAUTION**

- The system BIOS is protected by password. Any change in the BIOS may cause a system crash. When the system is booting, do not press ESC-button on keyboard. This may clear the BIOS settings and cause system faults.
- Any change in the file structure as deleting or adding files or directories might cause a system crash.
- Before installing software updates contact DEWETRON or your local distributor. Use only software packages which are released by DEWETRON. Further informations are also available in the internet (<http://www.dewetron.com>).
- After power off the system wait at least 10 seconds before switching the system on again. Otherwise the system may not boot correct. This prolongs also the life of all system components.

## **Windows updates and antivirus/security software**

Before installing Windows software updates consult with DEWETRON for compatibility guidance. Please also keep in mind that the use of any antivirus or other security software may slow down your system and may cause data loss.

## **Problematic network stacks**

Often intrusive IT software or network processes can interfere with the primary function of the DEWETRON system: to record data. Therefore we recommend strongly against the installation of IT/MIS software and running their processes on any DEWETRON data acquisition system, and cannot guarantee the performance of our systems if they are so configured.



## **Environmental Considerations**

Information about the environmental impact of the product.

## **Product End-of-Life Handling**

Observe the following guidelines when recycling a DEWETRON system:

## **System and Components Recycling**

Production of these components required the extraction and use of natural resources. The substances contained in the system could be harmful to your health and to the environment if the system is improperly handled at its end of life! Please recycle this product in an appropriate way to avoid an unnecessary pollution of the environment and to keep natural resources.

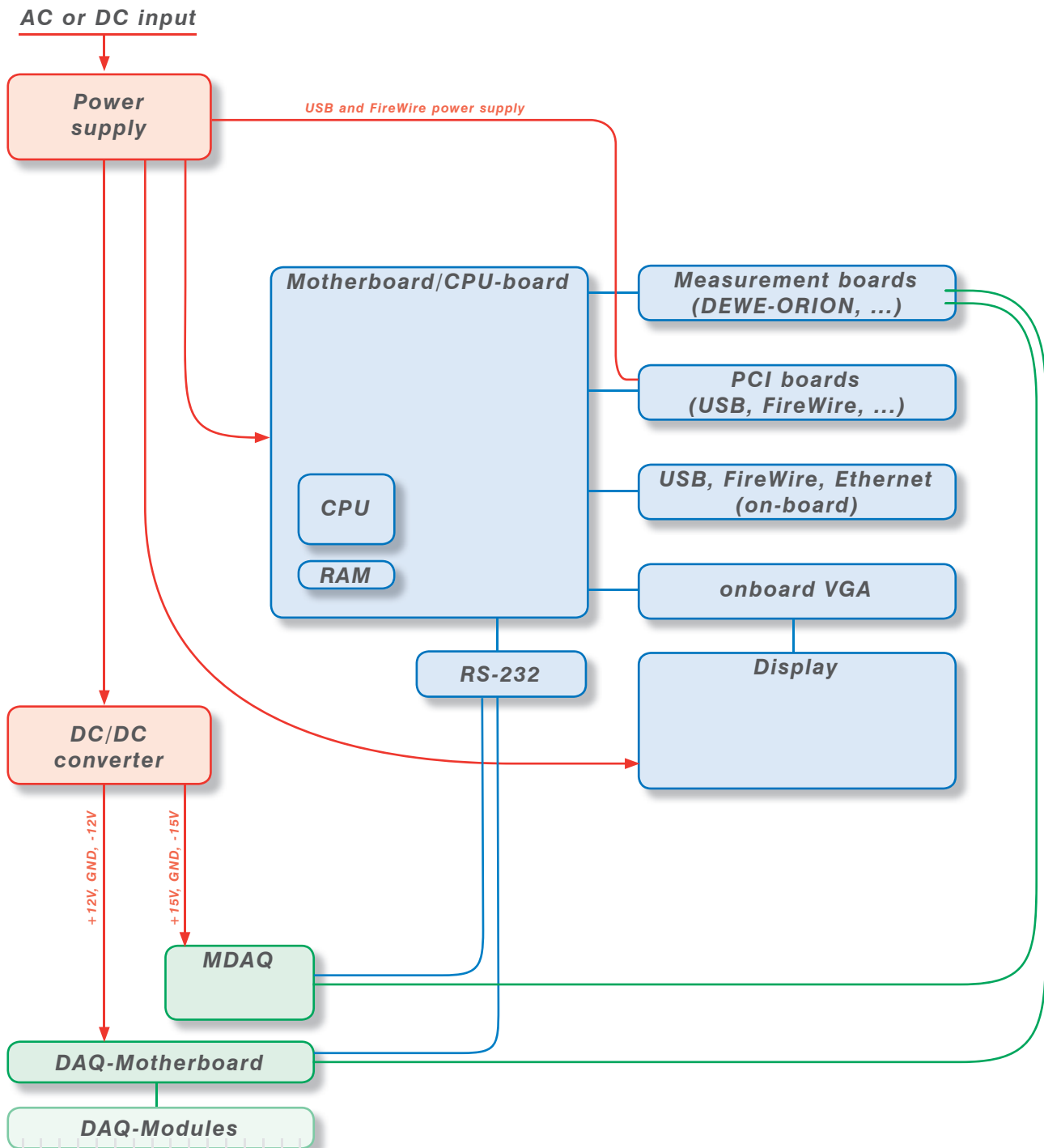
This symbol indicates that this system complies with the European Union's requirements according to Directive 2002/96/EC on waste electrical and electronic equipment (WEEE). Please find further informations about recycling on the DEWETRON web site [www.dewetron.com](http://www.dewetron.com)

## **Restriction of Hazardous Substances**

This product has been classified as Monitoring and Control equipment, and is outside the scope of the 2002/95/EC RoHS Directive. This product is known to contain lead.

# Signal processing

## Blockdiagram of the internal signal processing



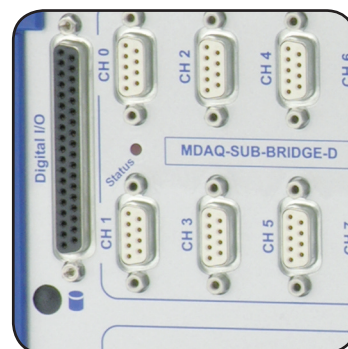
## First steps

1



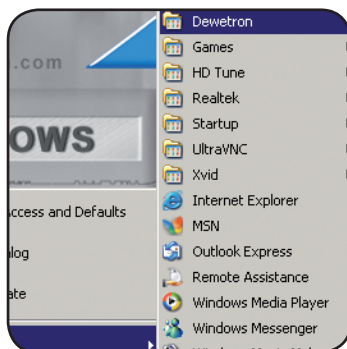
Power-on your system.

2



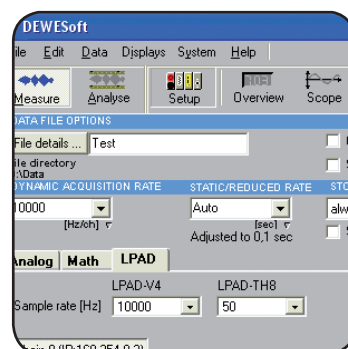
Connect your sensors to the system.

3



Run DEWESoft usually via "Start" > "Programs" > "Dewetron" > "DEWESoft x.x" > "DEWESoft x.x"

4



Start recording your data!

# First steps

---

Notes

## DEWE-50-PCI-32

- 32 slot signal conditioning with system isolation (in conjunction with DEWE-DAQ modules)
- Supports up to 7 full size PCI slots
- A/D converter specs: see appendix A
- Wiring to A/D converter: see appendix B

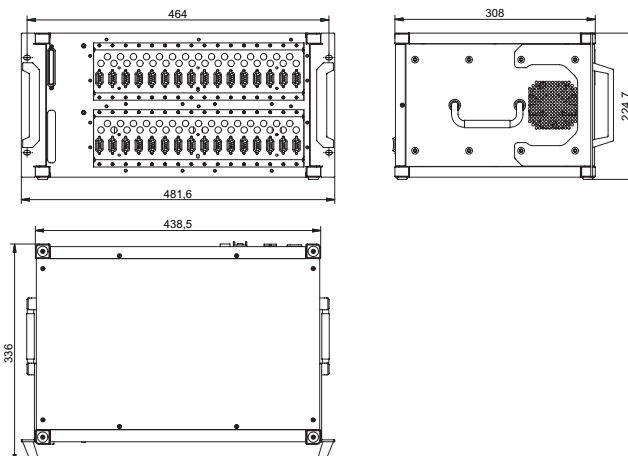


## System specifications

|                          | DEWE-50-PCI-32  |
|--------------------------|---|
| A/D converter interface: | <input type="checkbox"/> PCI<br><input type="checkbox"/> Express card 34<br><input type="checkbox"/> Express card 54  |
| Power supply:            | <input type="checkbox"/> 100 to 240 V <sub>AC</sub> (400 W) BEA 640<br><input type="checkbox"/> 100 to 240 V <sub>AC</sub> (300 W) FSP300-60PFN/PLN<br><input type="checkbox"/> 100 to 240 V <sub>AC</sub> (400 W) FSP400-60PFN/PLN<br><input type="checkbox"/> 11 to 30 V <sub>DC</sub> with UPS battery and 90 to 260 V <sub>AC</sub> power supply<br><input type="checkbox"/> 9 to 18 V <sub>DC</sub><br><input type="checkbox"/> 18 to 36 V <sub>DC</sub> |
| RS232 / 485 interface:   | Standard  |
| Operating temperature:   | 0 °C to 50 °C (standard)  |
| Storage temperature:     | -20 °C to +60 °C  |
| Humidity (operating):    | 10 % to 80 %, non condensing<br>5 % to 95 %, rel. humidity  |
| Vibration:               | MIL-STD 810F 514.5 procedure I<br>operating test procedure<br>frequency range: 5 to 200 to 5 Hz; 5 x 12 min each direction<br>displacement amplitude ±3.5 mm (5 to 8.45 Hz)<br>acceleration amplitude 1 g (8.45 to 92 Hz)<br>displacement amplitude 92 to 113 Hz: ±0.029 mm<br>acceleration amplitude 1.5 g (113 to 200 Hz)   |
| Shock:                   | MIL-STD 810F 516.5 procedure I<br>non operating test procedure<br>½ sinus 11 ms 10 g, 3 shocks positive, 3 shocks negative  |
| Dimensions (W x D x H):  | approx. 464 x 308 x 224.7 mm (18.3 x 12.1 x 8.8 in.) with 19" 50-MK option  |
| Weight:                  | typ. 11.4 kg (25 lbs), depending on configuration   |

### Dimensions\*

with 19" mounting kit  
(50-MK option)



\* Dimensions in mm  
(1 inch = 25.4 mm)

# Main System

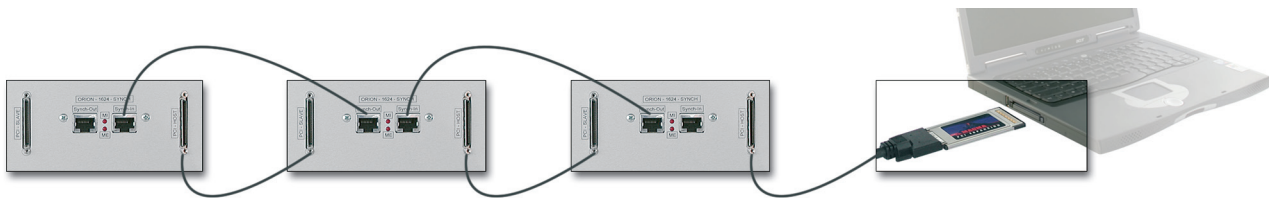
---

## PCI BRIDGE connector

Like all the DEWE-51-PCI-xx and the DEWE-50-PCI-xx the DEWE-50-PCI-32 is using PCI-to-PCI bridge technology as the basic structure. This technique allows to expand the internal data bus of a PC or add a PCI-Bus to systems like notebooks. In addition to this also a separation between the noisy PC environment and the high sensitive signal conditioning and digitizing of the analogue values increases the whole system quality. Since this PCI-to-PCI bridges are completely transparent there is no changing from the software point of view necessary to operate the DEWE-51-PCI-xx and DEWE-50-PCI-xx series. The host PC “thinks” all the PCI boards are installed inside the PC directly.

## PCI BRIDGE and Cascading (option -CS) connector

The PCI-HOST connector is normally connected to the PCI expansion connector of the Notebook (PCMCIA card) or DESKTOP PC (PCI card). Installing multiple DEWE-50-PCI-xx or DEWE-51-PCI-xx the PCI-SLAVE connector can be connected in daisy chain manner to the PCI-HOST connector of the neighbour system.



## ORION-1624 SYNC connector (option)

The Cascading option allows to expand the number of PCI slots for installing multiple boards. But this cascading does not guarantee the time synchronisation between the sub systems. Having ORI-ON-1624 installed in the DEWE-50-PCI-32 this synchronisation can be realised by expanding the ORI-ON-1624 synchronisation bus. Connecting multiple systems can simply be done with daisy chaining similar like cascading the PCI bus.

With two LED's the configuration of the subsystems is indicated: The LED ME is on if a right configured master system is connected at the Synch-IN-connector. MI is on if the DEWE-50-PCI-32 is configured to master.

## Software installation

The DEWE-51-PCI-xx and the DEWE-50-PCI-xx series are based on PCI to PCI bridge systems. It offers the expansion of the internal PCI slots of the DEWE-2010, DEWE-3020, DEWE-4010 or DEWE-5000 series or adds PCI slots to notebooks. Since the PCI bus is a basic system component of any PC the PCI to PCI bridge has neither Plug and Play nor hot swap capabilities. Therefore the driver installation is different to standard PCI-board installation or adding USB devices to your PC. In general following rules have to be considered during the software installation of the DEWE-51-PCI-xx and the DEWE-50-PCI-xx series:

In the first step the additional PCI slots have to be recognized from your system, than the drivers for additional hardware can be installed.

The following basic steps lead you through the installation process. Be aware that there are differences related to the operating system (WinXP or Win2000), the service pack and system drivers.

- Ensure power is turned off to all electronic devices prior to performing any maintenance or upgrades and installations.
- Following anti-static procedures in ALL steps!
- Insert the PCMCIA card (or the PCI Expansion Host Interface to the desktop PC)
- Connect the cable to both PCMCIA (or PCI) card and DEWE-50-PCI-xx or DEWE-51-PCI-xx.
- Plug in the DEWE-50-PCI-xx or DEWE-51-PCI-xx power cord.
- Power on the DEWE-50-PCI-xx first.
- Power on the Notebook (or PC).

Depending on the system – as described above – the first start may be different.

Usual procedure:

- The Notebook (or PC) will find a PCI-to-PCI bridge.
- Install the hardware driver by clicking 3 times <next> at the Windows hardware install wizard until reboot is prompted
- Reboot your system
- Run <setup.exe> from the System-DVD at directory <\\Install\Drivers\X\_Various\MAGMA\Windows Cardbus Drivers> and follow the installation instructions prompted to install the PCI expansion
- Shut down your complete system (include DEWE-50-PCI-xx or DEWE-51-PCI-xx)
- Turn on your system again (first DEWE-50-PCI-xx or DEWE-51-PCI-xx followed by the Notebook or PC)
- Again one additional PCI-to-PCI bridge will be found.
- Install the hardware driver but use the System-DVD as location for the driver
- Reboot your system again
- Now the Notebook (or PC) will find the hardware devices installed in the DEWE-50-PCI-xx or DEWE-51-PCI-xx (please refer below for usual hardware installing process).

It may happen that on the very first start already the PCI-hardware installed in the DEWE-50-PCI-xx or DEWE-51-PCI-xx is found without running <setup.exe> from the System-DVD. Please do not install any of these hardware drivers without running <setup.exe> from System-DVD. Try to do exact the steps described above. When the system prompt to install any hardware drivers before the above steps are not complete done please click <cancel> at the hardware driver install wizard. This will guarantee a well working system.

# Main System

## Installing the PCI-board hardware driver

The hardware installation procedure depends on the installed hardware in the DEWE-51-PCI-xx and the DEWE-50-PCI-xx.

- In case of NI card please abort the process and then insert the NI-DAQ CD to install the drivers. Please follow the installation instructions of the NI-DAQ setup program.
- In case of ORION-1624 card please insert the DEWE-System-DVD and select the location: Dewetron/Install/Drivers/6\_DaqBoards/Dewetron/Orion-1624-xxxx
- For other hardware please refer to the manufacturers installation instruction. The table beyond shows the installed PCI-Boards in the DEWE-50-PCI-xx or DEWE-51-PCI-xx and also the CD name of the driver location

## Used PCI boards and driver location

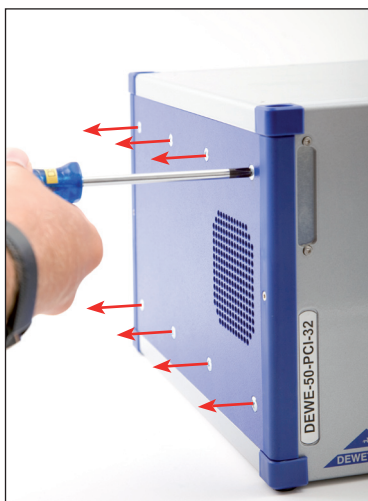
| Slot | PCI board | Driver location |
|------|-----------|-----------------|
| 1    |           |                 |
| 2    |           |                 |
| 3    |           |                 |
| 4    |           |                 |
| 5    |           |                 |
| 6    |           |                 |
| 7    |           |                 |

## Installing DEWESoft

It is recommended to Install all necessary drivers prior to installing DEWESoft, as DEWESoft will need to see the drivers and Orion cards present in order for the registration code to allow the software to function. Install DEWESoft, using the DEWE System-DVD. Locate the license key sheet provided by DEWETRON and be prepared to enter your license key into the field when DEWETRON runs for the first time. All of the hardware must be connected and properly working in order for this process to work, because DEWESoft compares the license to some values received from hardware within the DEWE-51-PCI-xx or DEWE-50-PCI-xx.

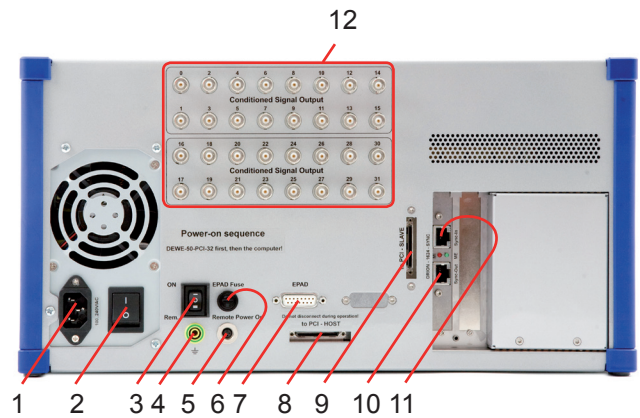
## Cleaning the filter pad

*Note: Check the filter pad frequently! A polluted filter pad may cause an overheating of the system! The cleaning interval depends on the environmental conditions.*



## Connectors

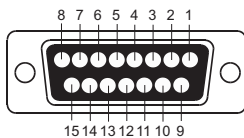
- 1 Power supply connector
- 2 Main power switch
- 3 Remote power switch (desktop solution only)
- 4 Ground connector
- 5 Remote power connector (desktop solution only)
- 6 EPAD fuse
- 7 EPAD interface connector
- 8 PCI-Bridge connector (host)
- 9 PCI-Bridge connector (slave)
- 10 Synchronisation output (DEWE-ORION-xxx)
- 11 Synchronisation input (DEWE-ORION-xxx)
- 12 Conditioned signal output (optional)



TYPICAL DEWE-50-PCI-32 REAR VIEW  
(this might vary from system to system)

### EPAD interface connector

The RS-485 interface connector is prepared to communicate with additional EPAD modules and to supply them.



15-pin SUB-D connector (female)

#### Pin assignment

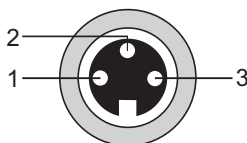
- 1 RS-485 A
  - 2 RS-485 B
  - 3 RS-485 GND
  - 14 GND (EPAD supply)
  - 15 + 12 V (EPAD supply)
- the remaining pins are not connected

### Ground connector

For some kind of measurements, it's necessary to give the system an additional ground connection.

### Remote power connector (option)

In combination with a Desktop-PC it is possible to switch on the DEWE-50-PCI-32 automatically with the PC. This can be done with a control voltage input which is connected to the power supply of the host PC. Switch the Power on / power remote switch to position "remote".

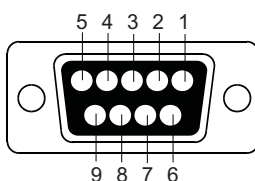


3-pin Binder 712 series connector (female)

#### Pin assignment

- 1: + 5 V<sub>DC</sub> input
- 2: GND
- 3: not connected

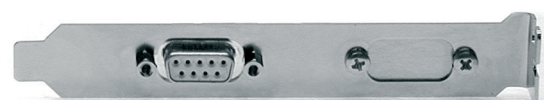
Mount the PCI slot cover at your Desktop-PC and connect it with the internal power supply of your PC.



9-pin SUB-D connector (female)

#### Pin assignment

- 2: + 5 V<sub>DC</sub> output
  - 5: GND
- the remaining pins are not connected



PCI slot cover

# Main System

## Power on / power remote switch

Switch to position “1” to power on the system manually. Switched to position “2” the system is powered on automatically when the connected PC is booted. Please be aware that the remote cable has to be connected.

*Please observe the power on sequence when you don't use the remote power function  
DEWE-50-PCI-32 first - then your computer.*

## Power supply connector

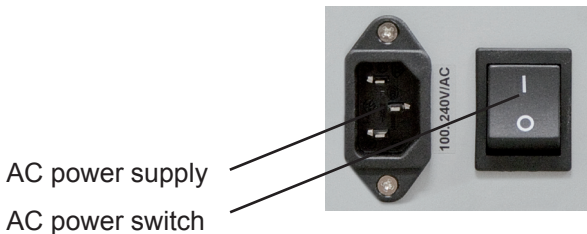
Supply voltage for the DEWE-50-PCI-32 depends on used power supply.

## Main power switch

The main power switch is used to power on / off the system.

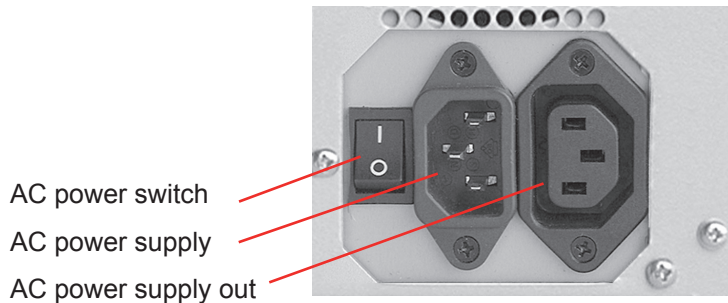
## AC power supply

| 400 W AC power supply |  | BEA-640            |  |
|-----------------------|--|--------------------|--|
| Input:                |  |                    |  |
| Input range:          | 90 to 260 V <sub>AC</sub> (active PFC)                   |                    |  |
| Input frequency:      | 47 to 63 Hz  |                    |  |
| Max. input current:   | 7 A (115 V <sub>AC</sub> ), 3.5 A (230 V <sub>AC</sub> ) |                    |  |
| Output:               |  |                    |  |
| Output power:         | 400 W continuous   |                    |  |
| Output voltages:      | +3.3 V (max. 28 A)                                       |                    |  |
|                       | +5 V (max. 35 A)   | -5 V (max. 0.5 A)  |  |
|                       | +5 Vsb (max. 2 A)  |                    |  |
|                       | +12 V (max. 30 A)  | -12 V (max. 0.8 A) |  |



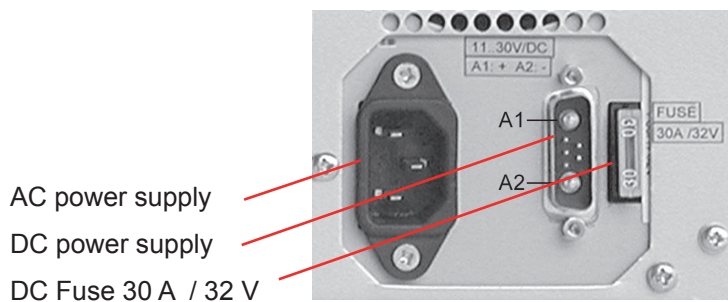
## AC power supply

| AC power supply     | 300 W AC ATX power supply<br>FSP300-60PFN/PLN  | 400 W AC ATX power supply<br>FSP400-60PFN/PLN  |
|---------------------|--|--|
| Input:              |  |  |
| Input range:        | 100 to 240 V <sub>AC</sub> (auto selecting)  | 100 to 240 V <sub>AC</sub> (auto selecting)  |
| Input frequency:    | 50 to 60 Hz  | 50 to 60 Hz  |
| Max. input current: | 10 A (115 V <sub>AC</sub> ) or 5 A (230 V <sub>AC</sub> )  | 10 A (115 V <sub>AC</sub> ) or 5 A (230 V <sub>AC</sub> )  |
| Output:             |  |  |
| Output power:       | 300 W (max. 180 W @ +3.3 V and +5 V)   | 400 W (max. 235 W @ +3.3 V and +5 V)   |
| Output voltages:    | +3.3 V (max. 28 A)<br>+5 V (max. 30 A) -5 V (max 0.3 A)<br>+5 Vsb (max. 2 A)<br>+12 V (max. 15 A) -12 V (max. 0.8 A) | +3.3 V (max. 28 A)<br>+5 V (max. 40 A) -5 V (max 0.3 A)<br>+5 Vsb (max. 2 A)<br>+12 V (max. 15 A) -12 V (max. 0.8 A) |



## AC and DC input power supply

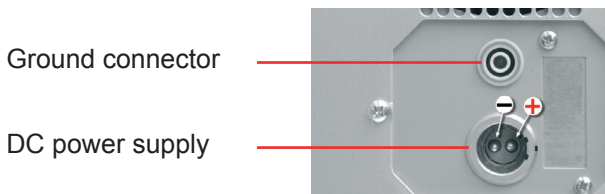
| 200 W dual power supply | MPS1058-100  |
|-------------------------|--|
| Input:                  |  |
| Input range:            | 90 to 260 V <sub>AC</sub> (auto selecting)<br>11 to 30 V <sub>DC</sub>   |
| Input frequency:        | 47 to 63 Hz or DC  |
| Max. input current:     | 4 A (110 V <sub>AC</sub> ), 2 A (230 V <sub>AC</sub> ), 30 A @ DC  |
| Output:                 |  |
| Output power:           | 200 W @ AC and DC > 18 V<br>DC 18 to 11 V derate 7 W / V   |
| Output voltages:        | +3.3 V (max. 15 A)<br>+5 V (max. 25 A) -5 V (max. 0.5 A)<br>+5 Vsb (max. 0.75 A)<br>+12 V (max. 10 A) -12 V (max. 0.8 A) |



# Main System

## DC power supply

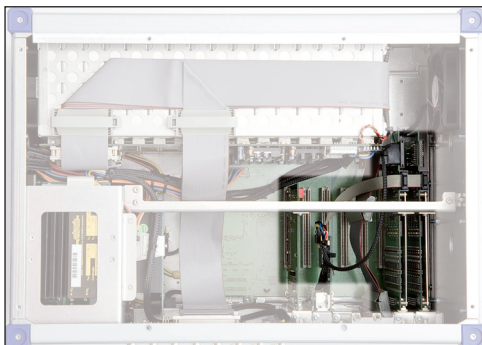
| 250 W DC power supply |   | APT-DX250H |                  |
|-----------------------|---|------------|------------------|
| Input:                |   |            |                  |
| Input range:          | 9 to 18 V <sub>DC</sub> (12 V <sub>DC</sub> nom.) |            |                  |
| Input frequency:      | DC  |            |                  |
| Max. input current:   | 50 A  |            |                  |
| Output:               |   |            |                  |
| Output power:         | 250 W   |            |                  |
| Output voltages:      | +3.3 V (max. 14 A)                                |            |                  |
|                       | +5 V (max. 25 A, min. 3 A, peak 30 A)             |            | -5 V (max. 1 A)  |
|                       | +5 Vsb (max. 1 A, peak 1.5 A)                     |            |                  |
|                       | +12 V (max. 10 A, min. 1 A, peak 12 A)            |            | -12 V (max. 2 A) |



## DC power supply

| 300 W DC power supply |  | APT-DY300HEW |                  |
|-----------------------|--|--------------|------------------|
| Input:                |  |              |                  |
| Input range:          | 18 to 36 V <sub>DC</sub> (24 V <sub>DC</sub> nom.) |              |                  |
| Input frequency:      | DC   |              |                  |
| Max. input current:   | 25 A   |              |                  |
| Output:               |  |              |                  |
| Output power:         | 300 W  |              |                  |
| Output voltages:      | +3.3 V (max. 28 A)                                 |              |                  |
|                       | +5 V (max. 30 A, min. 3 A, peak 35 A)              |              | -5 V (max. 1 A)  |
|                       | +5 Vsb (max. 1.5 A)                                |              |                  |
|                       | +12 V (max. 12 A, min. 1 A, peak 15 A)             |              | -12 V (max. 2 A) |

## Adding or exchanging PCI boards

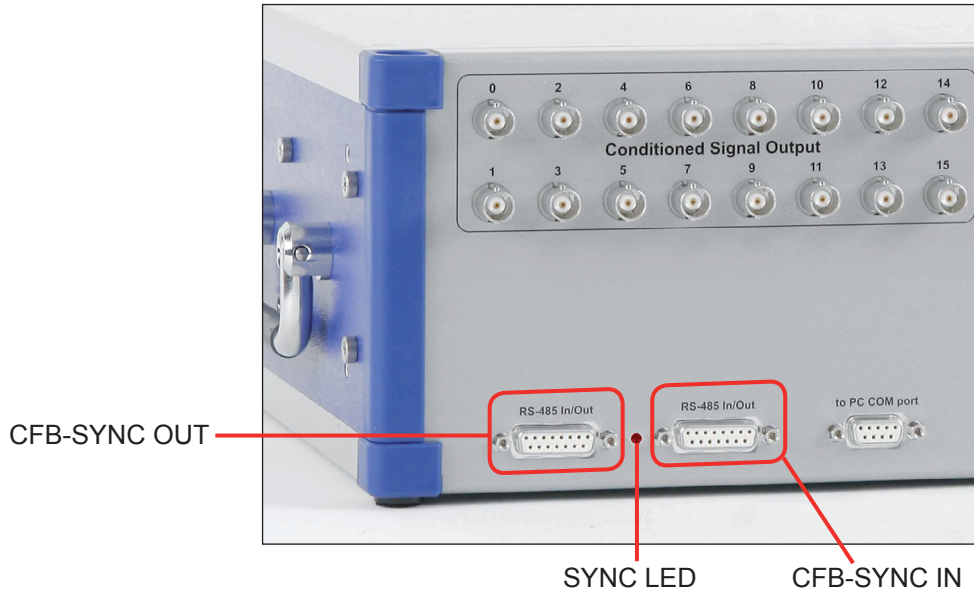


Opened DEWE-50-PCI-32

Before opening the instrument (experts only) disconnect power!

For installing additional PCI hardware remove the upper part of the housing. The fixture of additional PCI boards is similar like a standard desktop PC system. The DEWE-50-PCI-32 in total accepts 7 full size PCI boards.

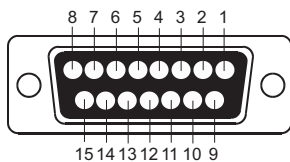
## Synchronisation of DAQP-CFB modules (optional)



If a signal is connected to CFB-SYNC IN the SYNC LED is turned on!

### Pin assignment of 15-pin SUB-D connector

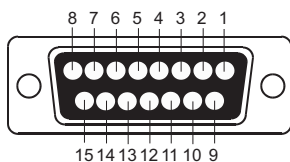
#### CFB-SYNC IN



#### Pin assignment

|                 |                      |
|-----------------|----------------------|
| 1: RS485 A      | 8: CFB-SYNC IN+      |
| 2: RS485 B      | 9: n.c.              |
| 3: GND          | 10: n.c.             |
| 4: n.c.         | 11: n.c.             |
| 5: GND          | 12: n.c.             |
| 6: n.c.         | 13: n.c.             |
| 7: CFB-SYNC IN- | 14: GND              |
|                 | 15: +12 V fused (1A) |

#### CFB-SYNC OUT



#### Pin assignment

|            |                      |
|------------|----------------------|
| 1: RS485 A | 8: CFB-SYNC IN+      |
| 2: RS485 B | 9: n.c.              |
| 3: GND     | 10: n.c.             |
| 4: n.c.    | 11: n.c.             |
| 5: GND     | 12: n.c.             |
| 6: n.c.    | 13: n.c.             |
| 7: GND     | 14: GND              |
|            | 15: +12 V fused (1A) |

# Main System

---

Notes

## DEWESoft

**DEWESoft** turns your hardware into a powerful data acquisition system. Our award-winning data acquisition package is second to none when it comes to both pure recording power and ease of use. Normally this is a difficult balancing act: providing lots of capability and performance, without making the user interface hard to learn. But we've done it!

DEWESoft is the solution to acquire signals synchronous from different sources, display and store them together and offer the data for post analysis.



One of the most powerful and yet easy to use aspect of DEWESoft is the creation of displays. Of course, a few standard displays are built-in for you, like screens for these instruments:

- Recorder (vertical and horizontal recorder screens are included)
- Oscilloscope (free run, triggered, with 2D and 3D waterfall displays, and more)
- FFT (with selectable axes, line length, window, type, averaging, overlapping, weighting, and more)
- Video – Scalable video window with an assignable recorder graph below
- GPS – Track with background map, plus speed, distance, heading, etc.

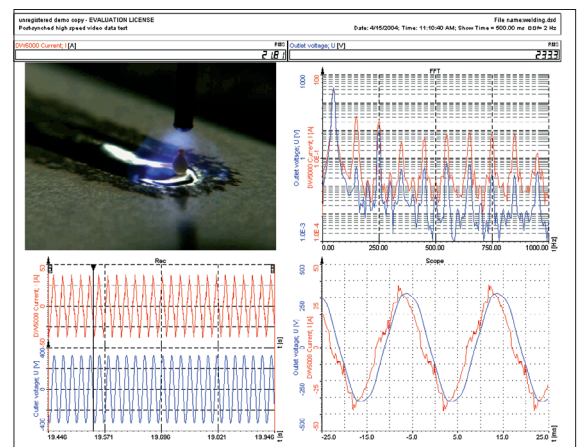


### Analyze Mode

REPLAY, EXPORT, SHARE DATA!

Here you can replay any captured data file, zoom in with the recorder graph cursors, make measurements, print in full color to any Windows printer, and export the data to a wide variety of formats compatible with today's popular analysis software packages, like Flexpro, Matlab, Excel, and many more.

You can even export a AVI video file from your recorded data to create "moving documentation." NO LICENSE is needed to use DEWESoft in the ANALYZE mode, so you can install the software on all your computers, or even distribute it to your customers, and they can install it. In this way, all of your colleagues and customers can replay your data files and do all of the functions that you can – just give them the data file to open.



## Notes

# A/D & D/A Conversion

---

## **A/D Conversion**

Please find information about the A/D conversion in the attached DEWE-ORION series manual. The latest version of the manual can be downloaded from:

<http://download.dewetron.com/dl/components/adboards>

Informations regarding different manufacturer's see the corresponding D/A card manual.

# A/D & D/A Conversion

---

Notes

# Internal Wiring

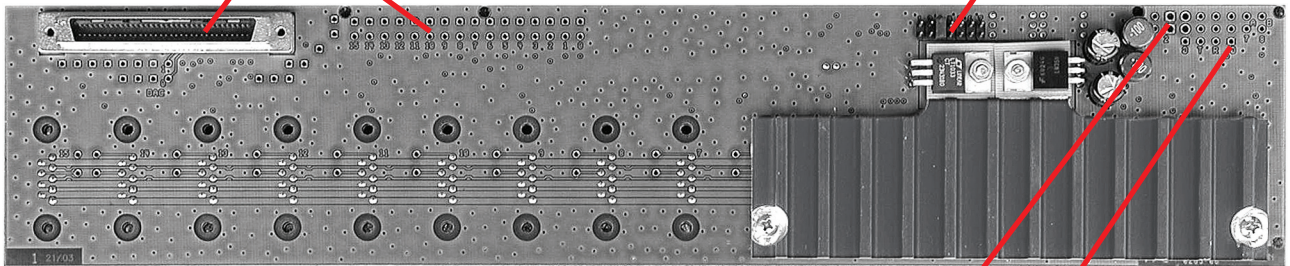
## 16 slot DEWE-MOTHERBOARD

### I/O connectors

Ixx: Analog input xx (leads to DAQ-modul pin 1 in slot xx)  
 Oxx: Analog output xx (leads to DAQ-modul pin 7 in slot xx)  
 G: GND (reference for A/D card)  
 68-pin high-density sub-D connector

### Baud rate for onboard RS-232/485 converter

- |   |        |
|---|--------|
| 1 | 115000 |
| 2 | 57600  |
| 3 | 38400  |
| 4 | 19200  |
| 5 | 9600   |
| 6 | 4800   |
| 7 | 2400   |



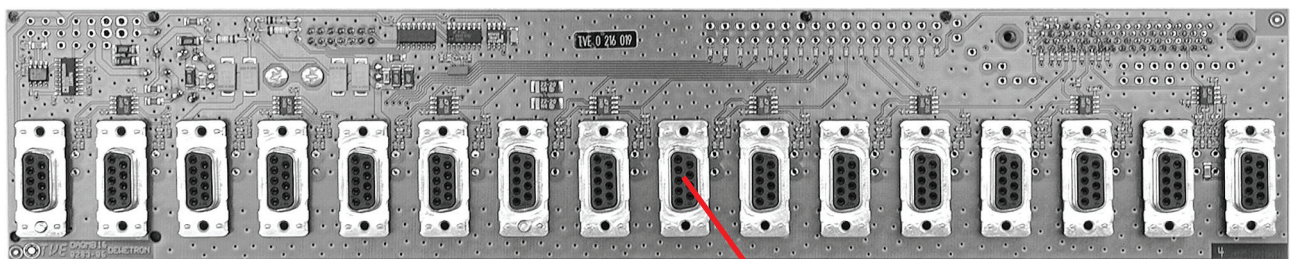
Rear view

### Supply voltages, RS-485 connection

- |   |   |
|---|---|
| 1 | +12 V (supply voltage)  |
| 2 | GND (system ground)   |
| 3 | GND (referenced ground)   |
| 4 | -12 V (supply voltage)  |
| 5 | +Vcc (sensor supply, normally +12 V, leads to DAQ-module pin 6) |
| 6 | -Vcc (normally not connected, leads to DAQ-module pin 8)        |
| 7 | A (RS-485)  |
| 8 | B (RS-485)  |

### RS-232 connection

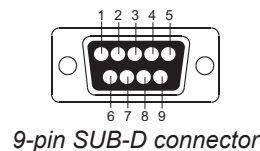
- |   |          |
|---|----------|
| G | GND      |
| T | Transmit |
| R | Receive  |
| G | GND      |



Front view (connectors for DAQ-modules)

### Interface pin assignment:

- |   |                                |
|---|--------------------------------|
| 1 | Module input ( $\pm 5$ V)      |
| 2 | RS-485 (A)                     |
| 3 | RS-485 (B)                     |
| 4 | GND                            |
| 5 | +9 V power supply              |
| 6 | +12 V power / sensor supply    |
| 7 | Module output (from A/D board) |
| 8 | reserved                       |
| 9 | -9 V power supply              |



The 16 slot DEWE-MOTHERBOARD receives the  $\pm 12$  V<sub>DC</sub> power supply via a DC/DC converter from the internal power supply.

# Internal Wiring

---

Notes

# CE-Certificate of conformity



Manufacturer:

**DEWETRON Elektronische Messgeraete Ges.m.b.H.**

Address:

**Parkring 4  
A-8074 Graz-Grambach Austria**

Tel.: +43 316 3070 0

Fax: +43 316 3070 90

e-mail: sales@dewetron.com

http://www.dewetron.com

Name of product:

**DEWE-50-PCI-32**

Kind of product:

*Modules*

The product meets the regulations of the following EC-directives:

**73/23/EEC**

**"Directive on the approximation of the laws of the Member States relating to electrical equipment designed for use within certain voltage limits amended by the directive 93/68/EEC"**

**89/336/EEC**

**"Directive on the approximation of the laws of the Member States relating to electromagnetic compatibility amended by the directives 91/263/EEC, 92/31/EEC, 93/68/EEC and 93/97/EEC"**

The accordance is proved by the observance of the following standards:

|                                  |                  |  |   |
|----------------------------------|------------------|--|---|
| <b>L<br/>V<br/>E<br/>M<br/>C</b> | <b>Safety</b>    | IEC/EN 61010-1:1992/93<br>IEC/EN 61010-2-031 | IEC 61010-1:1992/300 V CATIII PoI. D. 2<br>IEC 1010-2-031 |
|                                  | <b>Emissions</b> | EN 61000-6-4                                 | EN 55011 Class B  |
|                                  | <b>Immunity</b>  | EN 61000-6-2                                 | Group standard  |

**Graz, October 14, 2008**

Place / Date of the CE-marking

Dipl.-Ing. Roland Jeutter / Managing director

# Notes

---