

BIOS SETUP UTILITY

Advanced

IDE Configuration

ATA/IDE Configuration [Enhanced]
Configure SATA as [IDE]
Configure SATA Channels [Before PATA]
Port0 SATA AHCI Speed: GEN 1 (1.5 Gb/sec)
Port2 SATA AHCI Speed: GEN 1 (1.5 Gb/sec)

- ▶ Primary IDE Master : [Hard Disk]
- ▶ Primary IDE Slave : [ATAPI CDROM]
- ▶ Secondary IDE Master : [Not Detected]
- ▶ Secondary IDE Slave : [Not Detected]

Options

Disabled
Compatible
Enhanced

- ← Select Screen
- ↑↓ Select Item
- + - Change Option
- F1 General Help
- F10 Save and Exit
- ESC Exit

v02.59 (C) Copyright 1985-2005, American Megatrends, Inc.

BIOS SETUP UTILITY

Advanced

Floppy Configuration

Floppy A [Disabled]

Select the type of floppy drive connected to the system.

- ← Select Screen
- ↑↓ Select Item
- + - Change Option
- F1 General Help
- F10 Save and Exit
- ESC Exit

v02.59 (C) Copyright 1985-2005, American Megatrends, Inc.

BIOS SETUP UTILITY

Advanced

Configure ITE8712 Super IO Chipset

Serial Port1 Address [3F8/IRQ4]
Serial Port2 Address [2F8/IRQ3]
Serial Port2 Mode [Normal]
Parallel Port Address [Disabled]

Allows BIOS to Select Serial Port1 Base Addresses.

- + Select Screen
- ↑↓ Select Item
- + - Change Option
- F1 General Help
- F10 Save and Exit
- ESC Exit

v02.59 (C) Copyright 1985-2005, American Megatrends, Inc.

BIOS SETUP UTILITY

Advanced

Configure Remote Access type and parameters

Remote Access [Disabled]

Select Remote Access type.

- + Select Screen
- ↑↓ Select Item
- + - Change Option
- F1 General Help
- F10 Save and Exit
- ESC Exit

v02.59 (C) Copyright 1985-2005, American Megatrends, Inc.

BIOS SETUP UTILITY

Advanced

Trusted Computing

TCG/TPM SUPPORT [No]

Enable/Disable TPM
TCG (TPM 1.1/1.2) supp
in BIOS

- ← Select Screen
- ↑↓ Select Item
- + - Change Option
- F1 General Help
- F10 Save and Exit
- ESC Exit

BIOS SETUP UTILITY

Advanced

USB Configuration

Module Version - 2.24.0-11.4

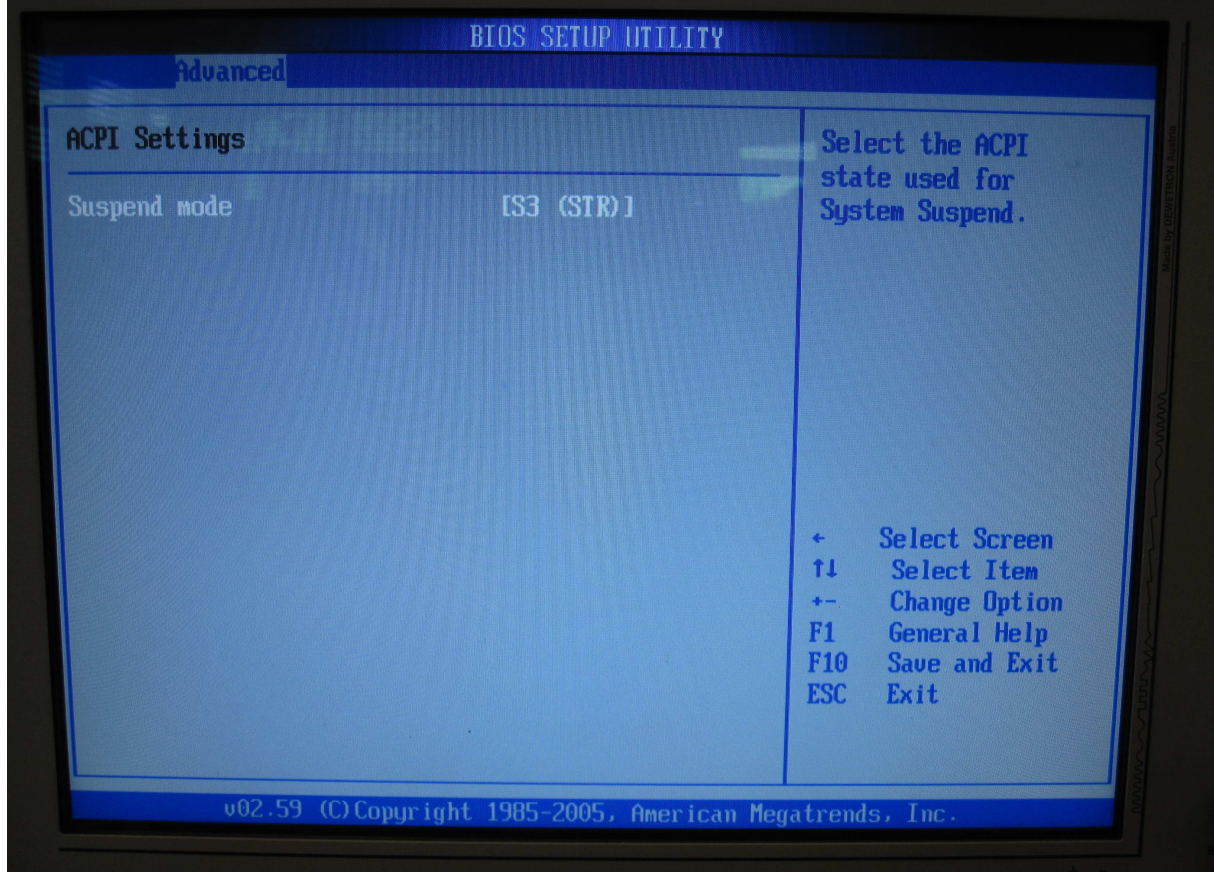
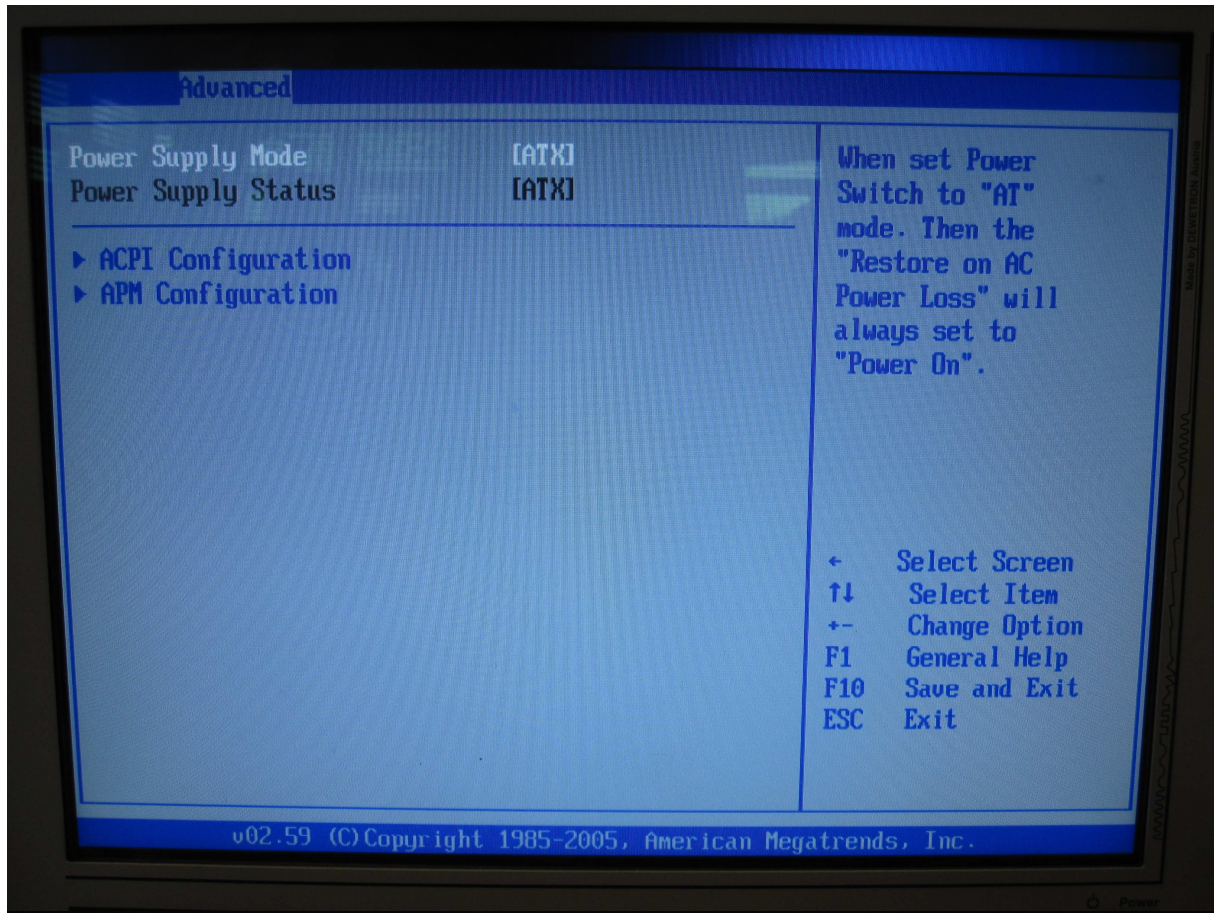
USB Devices Enabled :
1 Keyboard, 1 Mouse

USB Functions [Enabled]
USB 2.0 Controller [Enabled]
Legacy USB Support [Enabled]
USB 2.0 Controller Mode [HiSpeed]

Options

Disabled
Enabled

- ← Select Screen
- ↑↓ Select Item
- + - Change Option
- F1 General Help
- F10 Save and Exit
- ESC Exit



BIOS SETUP UTILITY

Advanced

APM Configuration

Restore on AC Power Loss [Power On]
Power Button Mode [On/Off]

Advanced Resume Event Controls

Resume On Ring [Disabled]
Resume On Lan [Disabled]
Resume On RTC Alarm [Disabled]
Resume On PS2 Keyboard/Mouse [Disabled]

Options

Power Off
Power On
Last State

- + Select Screen
↑↓ Select Item
+- Change Option
F1 General Help
F10 Save and Exit
ESC Exit

v02.59 (C) Copyright 1985-2005, American Megatrends, Inc.

BIOS SETUP UTILITY

Main Advanced PCIPnP Boot Security Chipset Exit

Advanced PCI/PnP Settings

WARNING: Setting wrong values in below sections
may cause system to malfunction.

IRQ3 [Reserved]
IRQ4 [Reserved]
IRQ5 [Available]
IRQ7 [Reserved]
IRQ9 [Available]
IRQ10 [Available]
IRQ11 [Available]
IRQ14 [Available]
IRQ15 [Available]
DMA Channel 0 [Available]
DMA Channel 1 [Available]
DMA Channel 3 [Available]
DMA Channel 5 [Available]

Available: Specified
IRQ is available to be
used by PCI/PnP
devices.
Reserved: Specified
IRQ is reserved for
use by Legacy ISA
devices.

- ← Select Screen
↑↓ Select Item
+- Change Option
F1 General Help
F10 Save and Exit
ESC Exit

v02.59 (C) Copyright 1985-2005, American Megatrends, Inc.

BIOS SETUP UTILITY

Boot

Boot Settings Configuration

Quick Boot	[Enabled]
Quiet Boot	[Disabled]
AddOn ROM Display Mode	[Force BIOS]
Bootup Num-Lock	[On]
Giga LAN Boot ROM support	[Disabled]

Allows BIOS to skip certain tests while booting. This will decrease the time needed to boot the system.

← Select Screen
↑↓ Select Item
+- Change Option
F1 General Help
F10 Save and Exit
ESC Exit

v02.59 (C) Copyright 1985-2005, American Megatrends, Inc.

BIOS SETUP UTILITY

Boot

Boot Device Priority

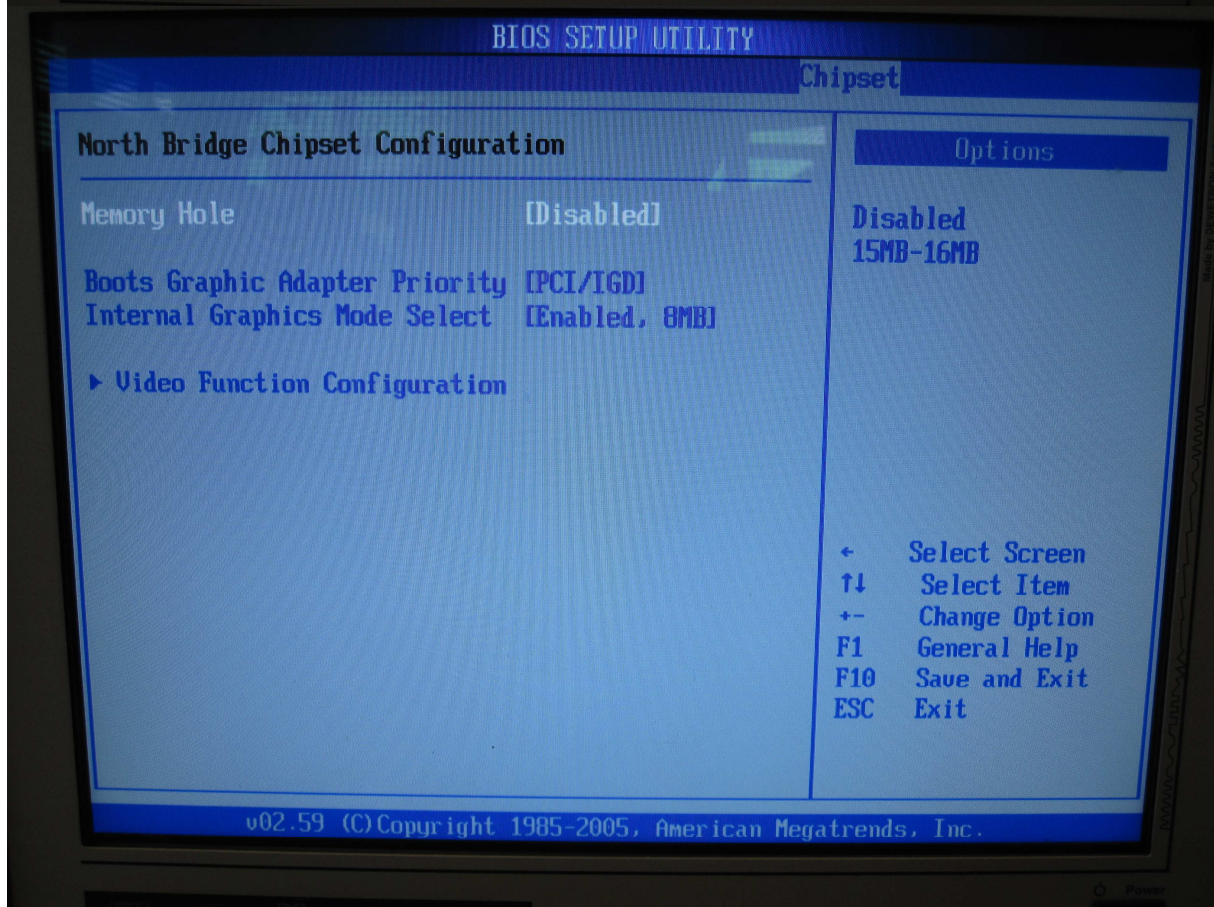
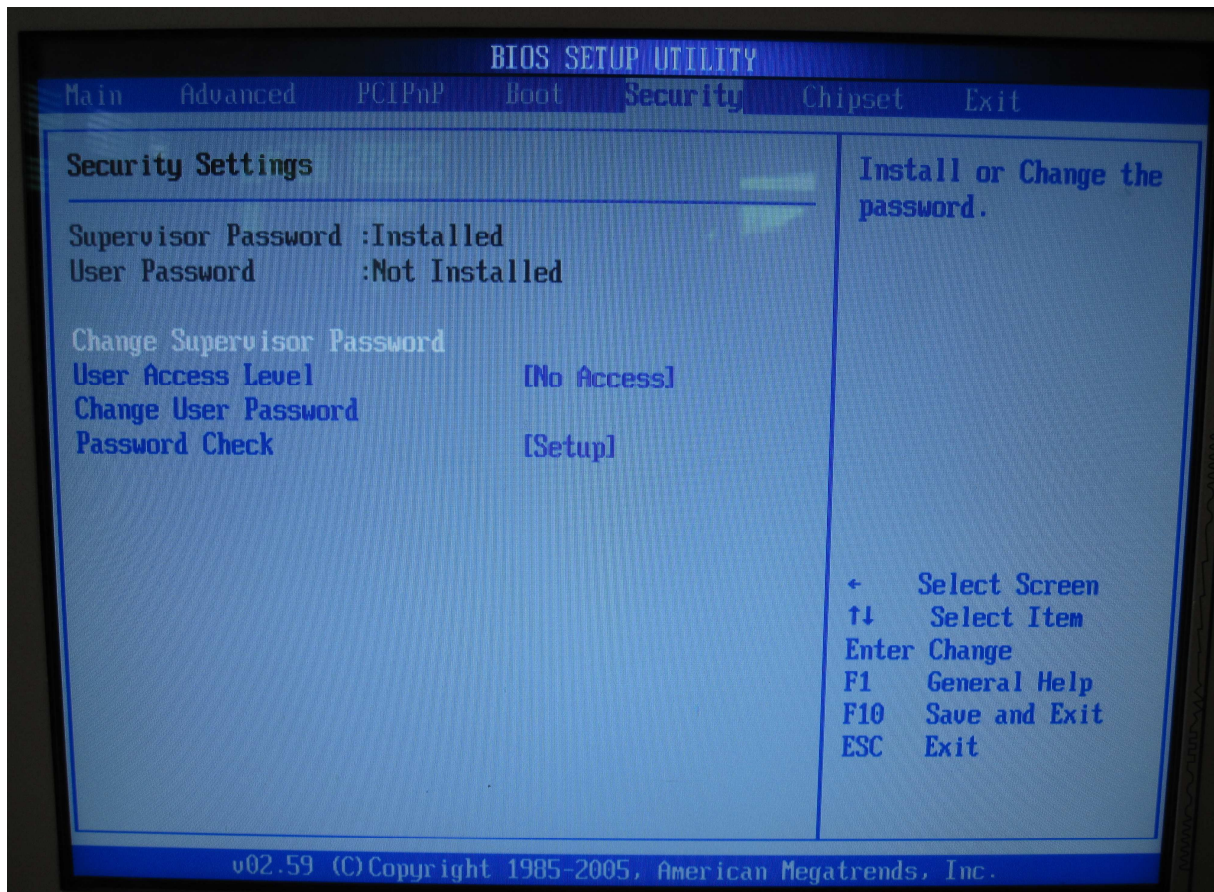
1st Boot Device	[CD/DVD:PS-Optiarc]
2nd Boot Device	[SATA:PM-WDC WD5002]

Specifies the boot sequence from the available devices.

A device enclosed in parenthesis has been disabled in the corresponding type menu.

← Select Screen
↑↓ Select Item
+- Change Option
F1 General Help
F10 Save and Exit
ESC Exit

v02.59 (C) Copyright 1985-2005, American Megatrends, Inc.



BIOS SETUP UTILITY

Chipset

Video Function Configuration

Boot Display Device [LVDS+CRT]
Flat Panel Type [1024*768 (24bits)]
TV Standard [PAL]
TV Sub-Type [PAL-B]

Options

CRT
TV
LVDS
LVDS+CRT

- < Select Screen
- ↑↓ Select Item
- + - Change Option
- F1 General Help
- F10 Save and Exit
- ESC Exit

v02.59 (C) Copyright 1985-2005, American Megatrends, Inc.

BIOS SETUP UTILITY

Chipset

South Bridge Chipset Configuration

Spread Spectrum Mode [Disabled]
Audio Controller [All Disabled]
Lan1 Enable/Disable [Enabled]
Lan2 Enable/Disable [Enabled]
Mini Card [Disabled]

Enable/Disable Spread Spectrum modulation.

- < Select Screen
- ↑↓ Select Item
- + - Change Option
- F1 General Help
- F10 Save and Exit
- ESC Exit

v02.59 (C) Copyright 1985-2005, American Megatrends, Inc.