

BIOS -SETTINGS
KTGM 45
(New Motherboard)
DEWE-26xx

!!! FIRST STEPS !!!

- BIOS Version KTGM 4513 (14.4.2011)
 - LOAD FAILSAFE DEFAULTS
- ➔ BIOS Settings could be set now!!

BIOS SETUP UTILITY

Main Advanced PCIPnP Boot Security Chipset Exit

System Overview

AMIBIOS

Version : 08.00.16
Build Date: 03/01/11
ID : KTGM4513
PCB ID : 03
Serial # : 00960934
Part # : 62330101

Note: Please flash
to
Version 1.3

Processor

Intel(R) Core(TM)2 Duo CPU P8600 @ 2.40GHz
Speed : 2400MHz

System Memory

Size : 3899MB

System Time

[07:10:05]

System Date

[Thu 04/14/2011]

Use [ENTER], [TAB]
or [SHIFT-TAB] to
select a field.

Use [+] or [-] to
configure system Time.

- ↔ Select Screen
- ↑↓ Select Item
- + - Change Field
- Tab Select Field
- F1 General Help
- F10 Save and Exit
- ESC Exit

v02.67+ (C) Copyright 1985-2009, American Megatrends, Inc.

BIOS SETUP UTILITY

Advanced

Configure advanced CPU settings

Module Version:3F.15

Manufacturer: Intel

Intel(R) Core(TM)2 Duo CPU P8600 @ 2.40GHz

Frequency :2.40GHz

FSB Speed :1066MHz

Cache L1 :64 KB

Cache L2 :3072 KB

Ratio Actual Value:9

Intel(R) Virtualization Tech [Enabled]

Execute-Disable Bit Capability [Enabled]

Intel(R) SpeedStep(tm) tech [Disabled]

Intel(R) C-STATE tech [Enabled]

Enhanced C-States [Enabled]

When enabled, a VMM can utilize the additional HW Caps. provided by Intel(R) Virtualization Tech. Note: A full reset is required to change the setting.

↔ Select Screen
↑↓ Select Item
+- Change Option
F1 General Help
F10 Save and Exit
ESC Exit

v02.67+ (C) Copyright 1985-2009, American Megatrends, Inc.

BIOS SETUP UTILITY

Advanced

IDE Configuration

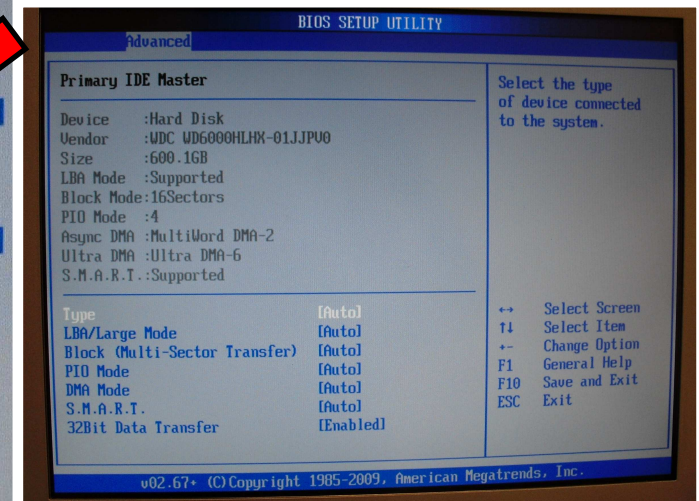
Mirrored IDER Configuration [Disabled]
SATA#1 Configuration [Enhanced]
Configure SATA#1 as [IDE]
SATA#2 Configuration [Enhanced]

▶ Primary IDE Master : [WDC WD6000HLX]
▶ Secondary IDE Master : [Not Detected]
▶ Third IDE Master : [Not Detected]
▶ Fourth IDE Master : [Optiarc DVD R]
▶ Fifth IDE Master : [Not Detected]
▶ Fifth IDE Slave : [Not Detected]

▶ AHCI Configuration
Hard Disk Write Protect [Disabled]
IDE Detect Time Out (Sec) [35]
ATA(PI) 80Pin Cable Detection [Host & Device]
JMicron 36x ATA Controller **DISABLED**

Options

Disabled
Compatible
Enhanced



BIOS SETUP UTILITY

Advanced

Primary IDE Master

Select the type of device connected to the system.

Device	: Hard Disk
Vendor	: WDC WD6000HLX-01JJPU0
Size	: 600.1GB
LBA Mode	: Supported
Block Mode	: 16Sectors
PIO Mode	: 4
Async DMA	: MultiWord DMA-2
Ultra DMA	: Ultra DMA-6
S.M.A.R.T.	: Supported

Type	[Auto]	↔ Select Screen
LBA/Large Mode	[Auto]	↑↓ Select Item
Block (Multi-Sector Transfer)	[Auto]	+ - Change Option
PIO Mode	[Auto]	F1 General Help
DMA Mode	[Auto]	F10 Save and Exit
S.M.A.R.T.	[Auto]	ESC Exit
32Bit Data Transfer	[Enabled]	

v02.67+ (C) Copyright 1985-2009, American Megatrends, Inc.

v02.67+ (C) Copyright 1985-2009, American Megatrends, Inc.

Advanced

LAN Configuration

ETH1 Configuration [Enabled]
GbE Wake Up From S5 [Disabled]
MAC Address & Link status : 00E0F42461CD -
ETH2 Configuration (Lower) [Enabled]
MAC Address & Link status : 00E0F42461CE -
ETH3 Configuration (Upper) [Enabled]
MAC Address & Link status : 00E0F42461CF -

Control of Ethernet
Devices and PXE boot

↔ Select Screen
↑↓ Select Item
+- Change Option
F1 General Help
F10 Save and Exit
ESC Exit

BIOS SETUP UTILITY

Advanced

Configure Win627DHG Super IO Chipset

Serial Port1 Address	[3F8/IRQ4]
Serial Port2 Address	[2F8/IRQ3]
Serial Port2 Mode	[Normal]
Serial Port3 Address	[Disabled]
Serial Port4 Address	[Disabled]

Allows BIOS to Select Serial Port1 Base Addresses.

Might be needed if NI or DAP board in use

- ↔ Select Screen
- ↑↓ Select Item
- + - Change Option
- F1 General Help
- F10 Save and Exit
- ESC Exit

BIOS SETUP UTILITY

Advanced

Hardware Health Configuration

System Temperature :23°C/73°F
CPU Temperature :40°C/104°F
UTIN Temperature :N/A
System Temperature 2 :N/A

SYSFAN Speed :Fail
Fan Cruise Control [Thermal]
Fan Setting [51°C/123°F]

CPU FAN Speed :Fail
Fan Cruise Control [Thermal]
Fan Setting [54°C/129°F]

AUXFAN Speed :Fail
Fan Cruise Control [Disabled]

Fan Step Time [2]

Watchdog Function [Disabled]

Disabled = Full speed.

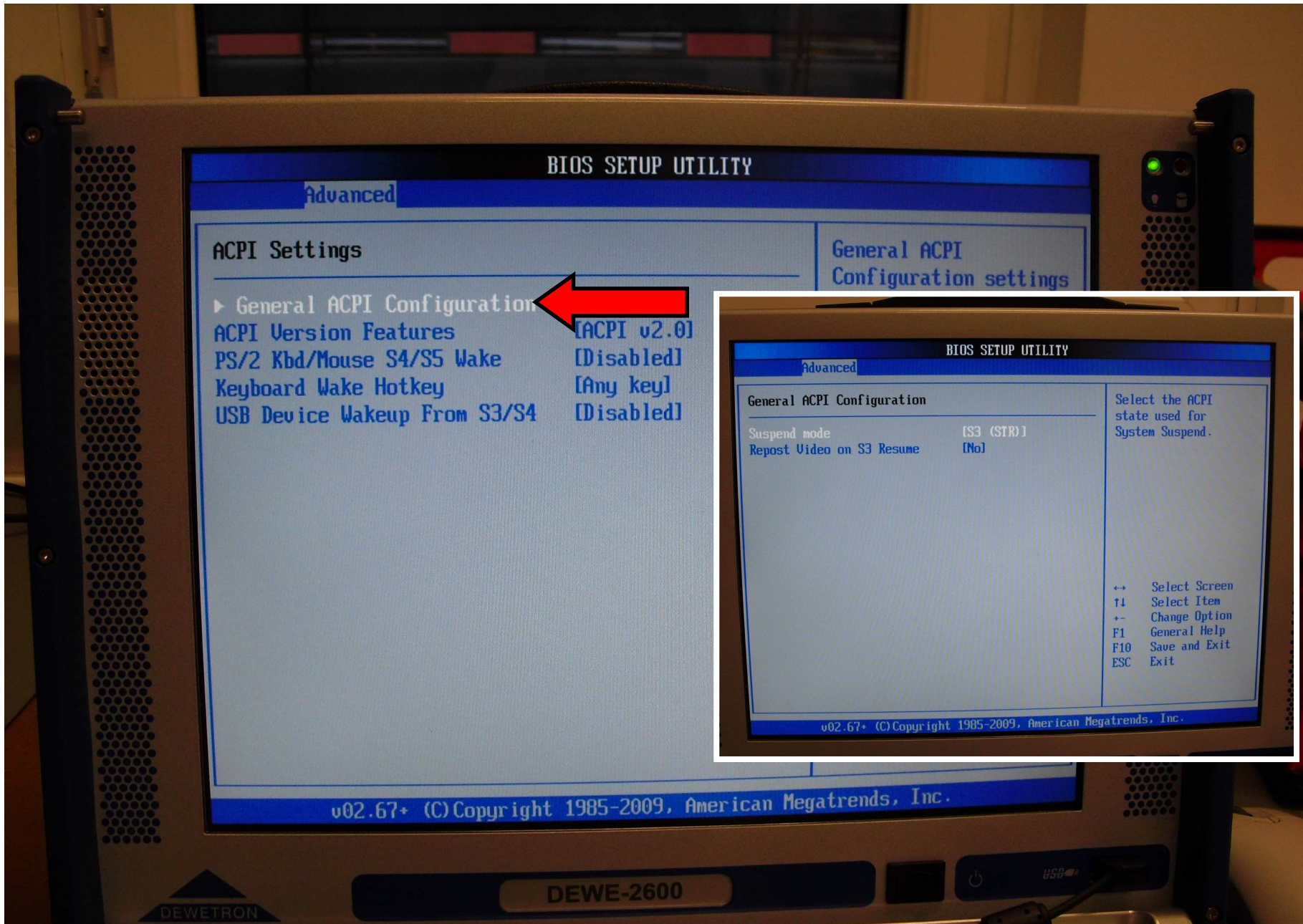
Thermal: does regulate fan speed according to specified temperature

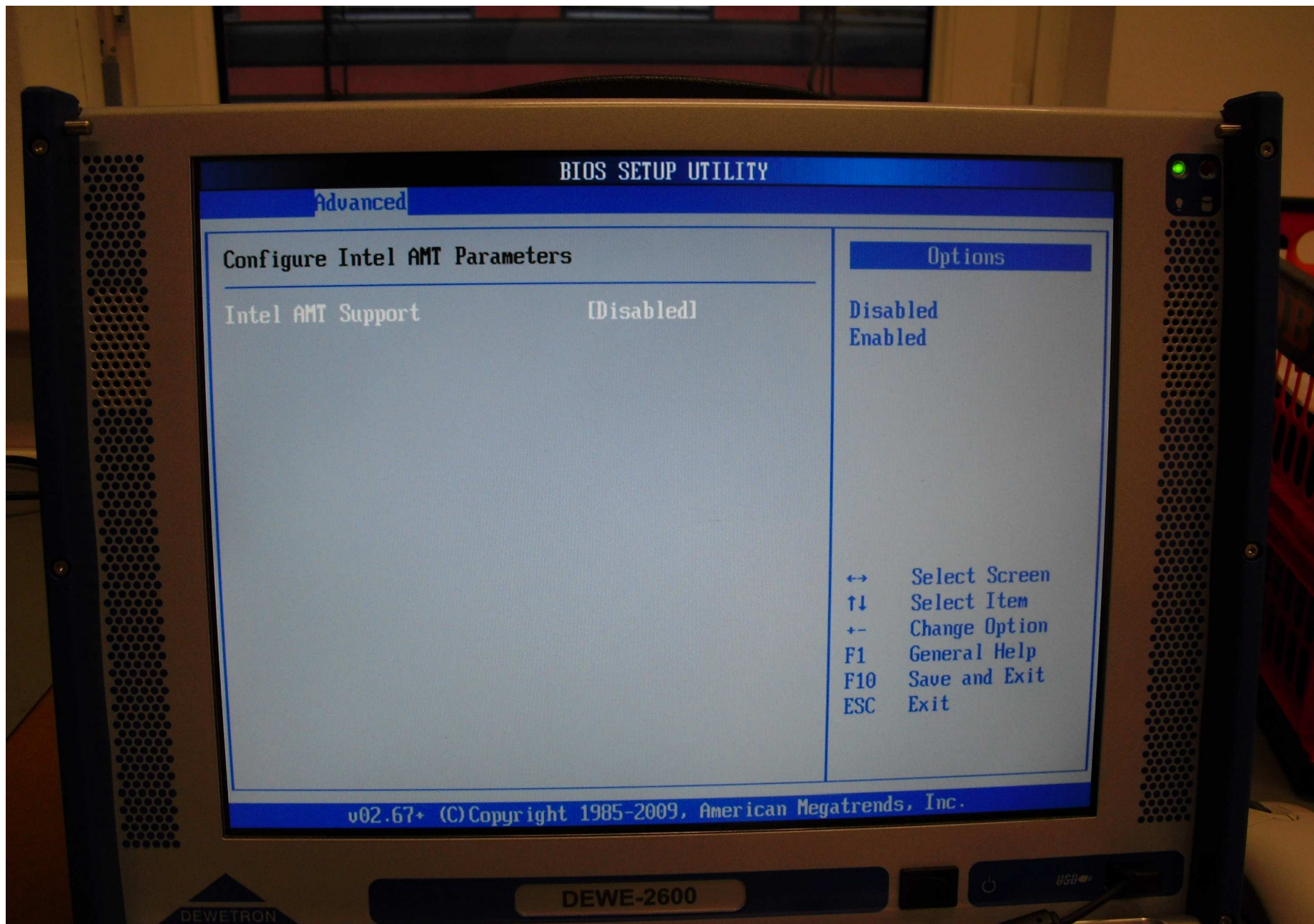
Speed: does regulate according to specified RPM.

↔ Select Screen
↑↓ Select Item
+- Change Option
F1 General Help
F10 Save and Exit
ESC Exit

v02.67+ (C) Copyright 1985-2009, American Megatrends, Inc.

DEWE-2600





Advanced

BIOS SETUP UTILITY

Configure Intel AMT Parameters

Intel AMT Support [Disabled]

Options

Disabled
Enabled

- ↔ Select Screen
- ↑↓ Select Item
- + - Change Option
- F1 General Help
- F10 Save and Exit
- ESC Exit

v02.67+ (C) Copyright 1985-2009, American Megatrends, Inc.

DEWETRON

DEWE-2600

USB



Advanced

BIOS SETUP UTILITY

Configure Intel TXT (LT) Parameters

Intel TXT Initialization [Disabled]

Options

Disabled
Enabled

←→ Select Screen
↑↓ Select Item
+- Change Option
F1 General Help
F10 Save and Exit
ESC Exit

v02.67+ (C) Copyright 1985-2009, American Megatrends, Inc.

DEWE-2600

USB

BIOS SETUP UTILITY

Advanced

Intel VT-d Configuration

Intel VT-d [Disabled]

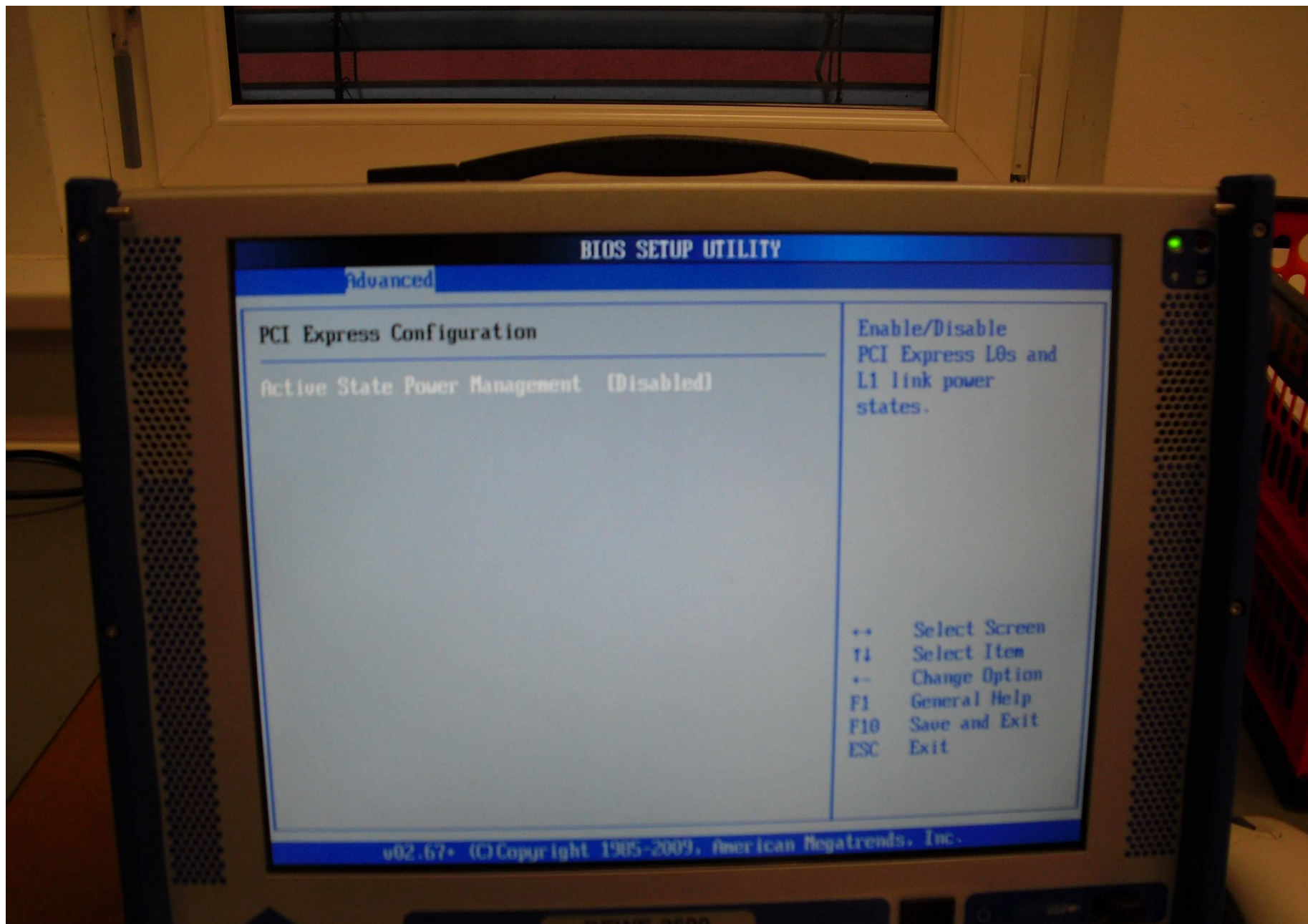
Options

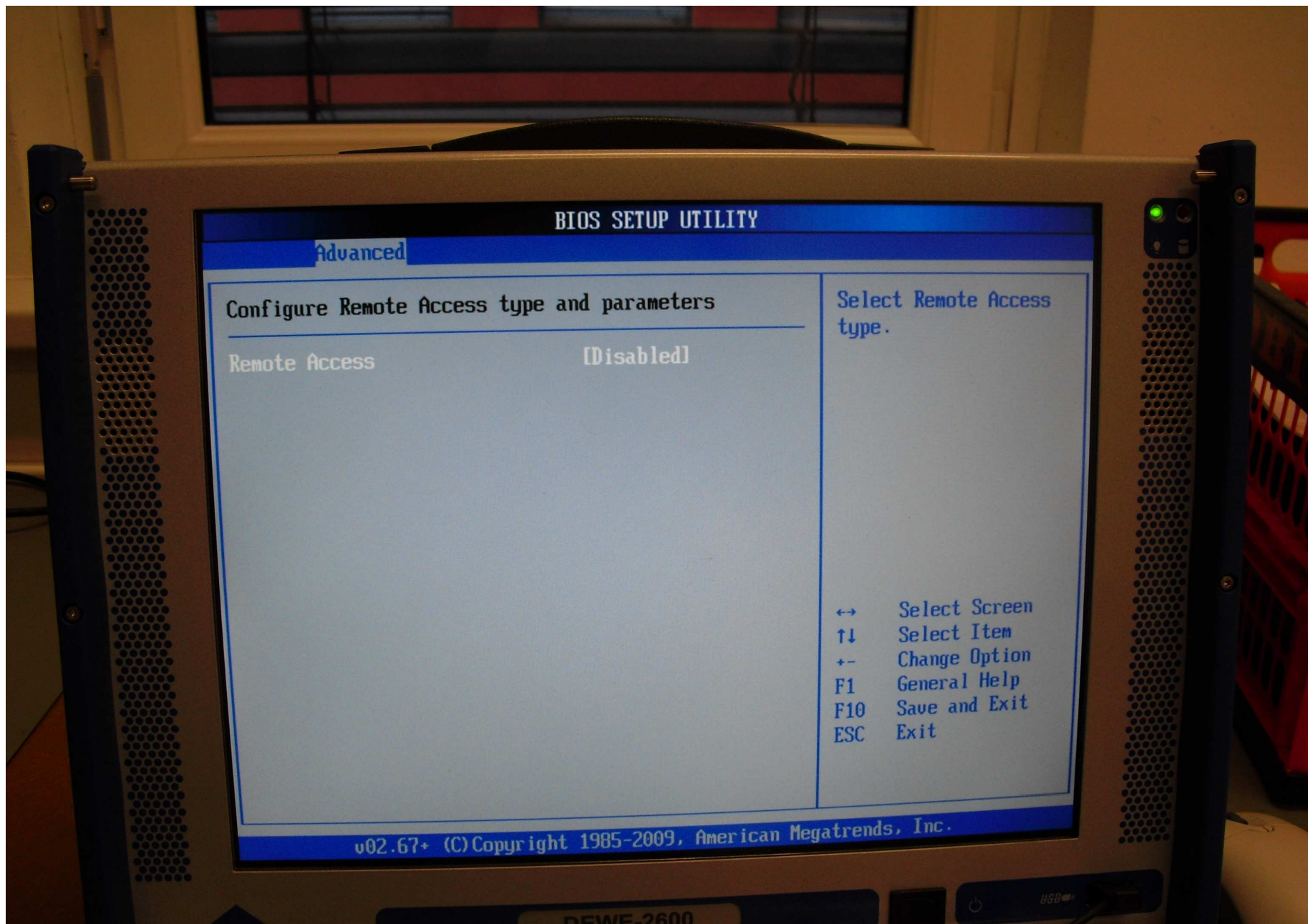
Disabled
Enabled

- ↔ Select Screen
- ↑↓ Select Item
- + - Change Option
- F1 General Help
- F10 Save and Exit
- ESC Exit

v02.67+ (C) Copyright 1985-2009, American Megatrends, Inc.

DEWE-2600







BIOS SETUP UTILITY

Advanced

USB Configuration

Module Version - 2.24.3-13.4

USB Devices Enabled :
1 Keyboard, 1 Mouse

Legacy USB Support	[Enabled]
USB 2.0 Controller Mode	[HiSpeed]
BIOS EHCI Hand-Off	[Enabled]

Enables support for legacy USB. AUTO option disables legacy support if no USB devices are connected.

↔ Select Screen
↑↓ Select Item
+- Change Option
F1 General Help
F10 Save and Exit
ESC Exit

v02.67+ (C) Copyright 1985-2009, American Megatrends, Inc.

DEWE-2600

BIOS SETUP UTILITY

Main Advanced **PCIPnP** Boot Security Chipset Exit

Advanced PCI/PnP Settings

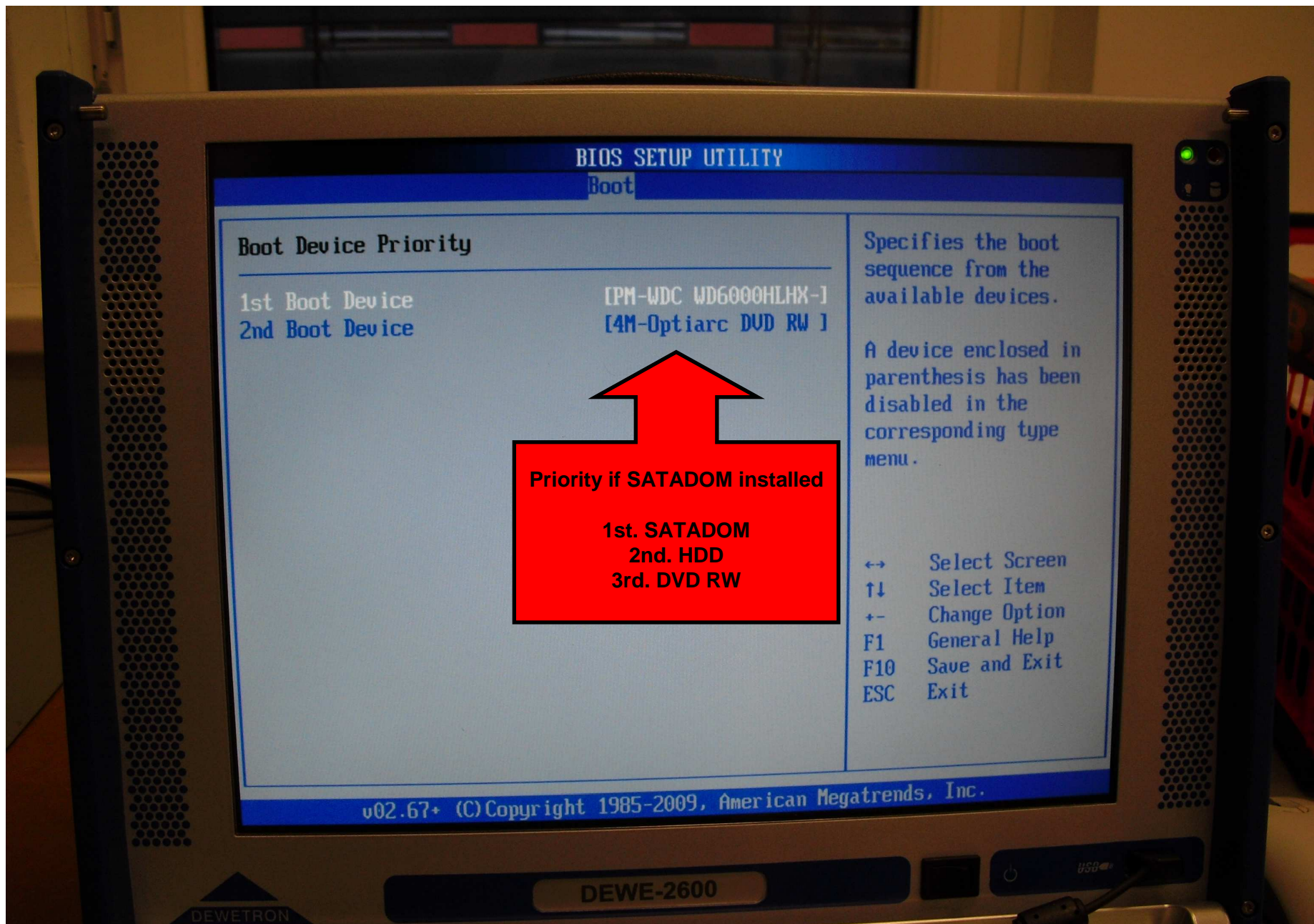
WARNING: Setting wrong values in below sections
may cause system to malfunction.

Plug & Play O/S	[Yes]
Allocate IRQ to PCI UGA	[Yes]

NO: lets the BIOS configure all the devices in the system.
YES: lets the operating system configure Plug and Play (PnP) devices not required for boot if your system has a Plug and Play operating system.

↔ Select Screen
↑↓ Select Item
+- Change Option
F1 General Help
F10 Save and Exit
ESC Exit

v02.67+ (C) Copyright 1985-2009, American Megatrends, Inc.



v02.67+ (C) Copyright 1985-2009, American Megatrends, Inc.

DEWE-2600

BIOS SETUP UTILITY

Boot

Boot Settings Configuration

Quick Boot	[Enabled]
Quiet Boot	[Disabled]
AddOn ROM Display Mode	[Force BIOS]
Bootup Num-Lock	[On]
PS/2 Mouse Support	[Auto]
Wait For 'F1' If Error	[Enabled]
Hit 'DEL' Message Display	[Enabled]
Interrupt 19 Capture	[Disabled]
Default init boot order	[3->5->1->2->0->4]
Force boot Device	[Disabled]
Boot Fail Option	[Wait Key Press]
Alternative initialization	[Disabled]

Allows BIOS to skip certain tests while booting. This will decrease the time needed to boot the system.

- ↔ Select Screen
- ↑↓ Select Item
- + - Change Option
- F1 General Help
- F10 Save and Exit
- ESC Exit

BIOS SETUP UTILITY

Main Advanced PCIPnP Boot **Security** Chipset Exit

Security Settings

Supervisor Password :Installed
User Password :Not Installed

Change Supervisor Password
User Access Level [No Access]
Change User Password
Password Check [Setup]

Boot Sector Virus Protection [Enabled]

Hard Disk Security

Primary Master HDD Password Status :Disabled

Primary Master HDD User Password

Install or Change the password.

- ←→ Select Screen
- ↑↓ Select Item
- Enter Change
- F1 General Help
- F10 Save and Exit
- ESC Exit

BIOS SETUP UTILITY

Chipset

North Bridge Chipset Configuration

Thermal Memory Reference Code(TMRC)

TS on DIMM [Disabled]

Memory Hole [Disabled]

Boots Graphic Adapter Priority [IGD]

Internal Graphics Mode Select [Enabled, 128MB]

PEG Port Configuration

PEG Port [Auto]

▶ Video Function Configuration

Enable/Disable
Thermal Sensor On
DIMM.

- ↔ Select Screen
- ↑↓ Select Item
- + - Change Option
- F1 General Help
- F10 Save and Exit
- ESC Exit

BIOS SETUP UTILITY

Chipset

Video Function Configuration

DUMT Memory size [256MB]
PAVP Mode [Disabled]

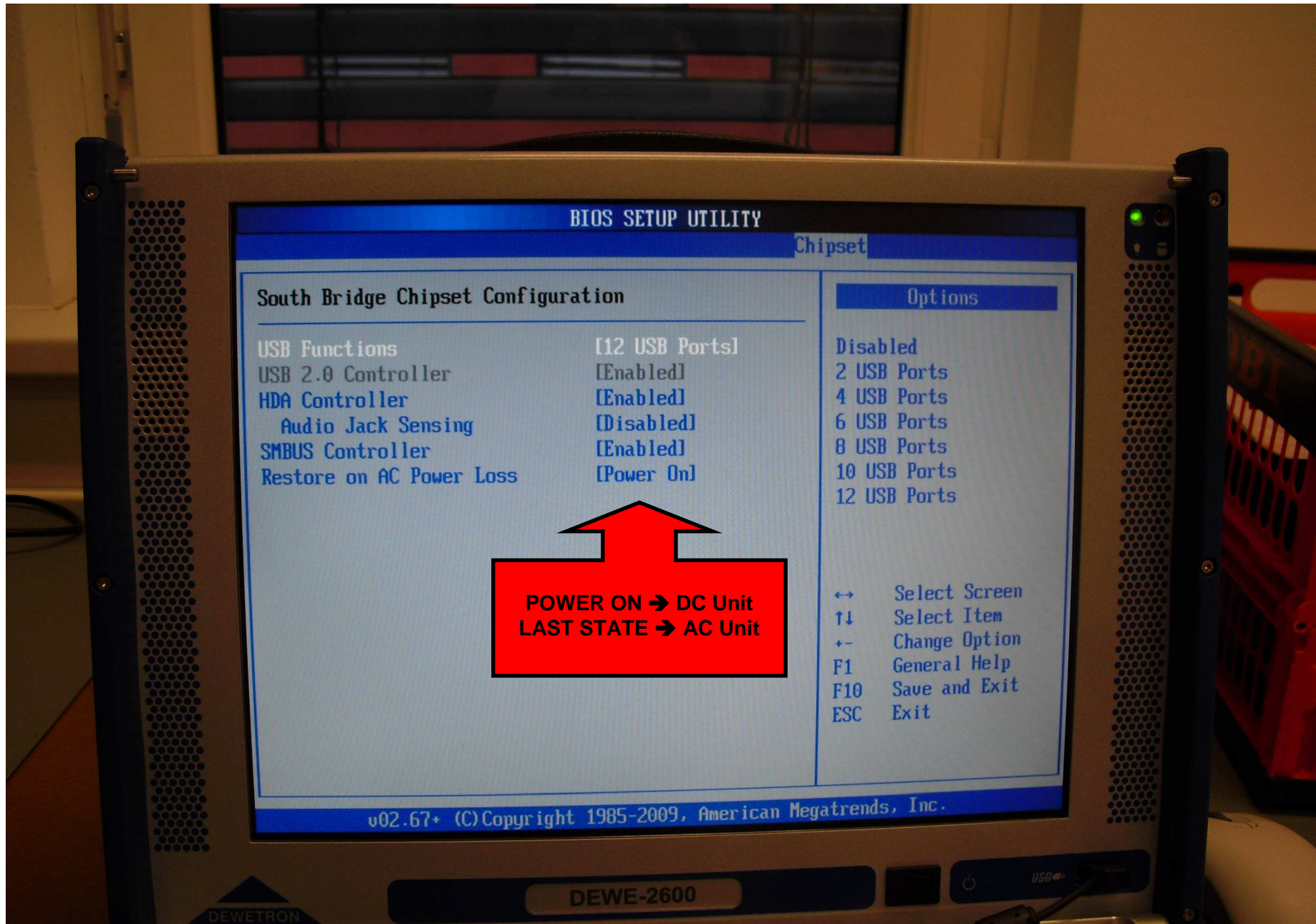
Boot Display Device [CRT + LVDS]
TV Standard [VBIOS-Default]
Spread Spectrum Clock [Disabled]
HDCP Support [Disabled]
LVDS [LTM150XH-L06]
SDVO [N/A]

Backlight Signal Inversion [Disabled]
LCDVCC Voltage [3.3V]
Emulate EDID [Disabled]

This setting is only available for WinXp.

At Wide screen LED Display
1280x800
STANDARD
1280x800x24

- ↔ Select Screen
- ↑↓ Select Item
- + - Change Option
- F1 General Help
- F10 Save and Exit
- ESC Exit



BIOS SETUP UTILITY

Chipset

South Bridge Chipset Configuration

USB Functions [12 USB Ports]
USB 2.0 Controller [Enabled]
HDA Controller [Enabled]
Audio Jack Sensing [Disabled]
SMBUS Controller [Enabled]
Restore on AC Power Loss [Power On]

Options

Disabled
2 USB Ports
4 USB Ports
6 USB Ports
8 USB Ports
10 USB Ports
12 USB Ports

POWER ON -> DC Unit
LAST STATE -> AC Unit

←→ Select Screen
↑↓ Select Item
+- Change Option
F1 General Help
F10 Save and Exit
ESC Exit

v02.67+ (C) Copyright 1985-2009, American Megatrends, Inc.

DEWE-2600

