

BIOS SETUP UTILITY

Advanced

Configure advanced CPU settings
Module Version -13.04

When disabled, force the XD feature flag to always return 0.

Manufacturer: Intel
Brand String: Intel(R) Core(TM)2 CPU T7200
Frequency : 2.00GHz
FSB Speed : 667MHz

Cache L1 : 64 KB
Cache L2 : 4096 KB

Execute Disable Bit [Enabled]
Core Multi-Processing [Enabled]
Vanderpool Technology [Enabled]
Intel(R) SpeedStep(tm) tech. [Maximum Speed]

↔ Select Screen
↑↓ Select Item
+- Change Option
F1 General Help
F10 Save and Exit
ESC Exit

v02.59+ (C) Copyright 1985-2005, American Megatrends, Inc.

BIOS SETUP UTILITY

Advanced

IDE Configuration

Options

ATA/IDE Configuration [Enhanced]
Configure SATA as [RAID]
Port0 SATA AHCI Speed: GEN 2 (3.0 Gb/sec)
Port3 SATA AHCI Speed: GEN 2 (3.0 Gb/sec)

▶ Primary IDE Master : [ATAPI CDROM]
▶ Primary IDE Slave : [Not Detected]

Disabled
Compatible
Enhanced

Hard Disk Write Protect [Disabled]
IDE Detect Time Out (Sec) [35]
ATA(P) 80Pin Cable Detection [Host & Device]
Staggered Spin-up delay [2]

↔ Select Screen
↑↓ Select Item
+- Change Option
F1 General Help
F10 Save and Exit
ESC Exit

v02.59+ (C) Copyright 1985-2005, American Megatrends, Inc.

acer

Advanced

LAN Configuration

ETH1 Configuration [Enabled]
MAC Address : 00E0F4178EBB -
ETH2 Configuration (Upper) [Enabled]
MAC Address : 00E0F4178EBC -
ETH3 Configuration (Lower) [Enabled]
MAC Address : 00E0F4178EBD -

Control of Ethernet
Devices and PXE boot

↔ Select Screen
↑↓ Select Item
+- Change Option
F1 General Help
F10 Save and Exit
ESC Exit

v02.59+ (C) Copyright 1985-2005, American Megatrends, Inc.

acer

Advanced

FW/IEEE 1394 Configuration

FW/IEEE 1394 Configuration [Enabled]

Configure the Firewire
Device.

↔ Select Screen
↑↓ Select Item
+- Change Option
F1 General Help
F10 Save and Exit
ESC Exit

v02.59+ (C) Copyright 1985-2005, American Megatrends, Inc.

acer

Configure Win627THF Super IO Chipset

Serial Port1 Address	[3F8/IRQ4]
Serial Port2 Address	[Disabled]
Parallel Port Address	[Disabled]
Serial Port3 Address	[Disabled]
Serial Port4 Address	[Disabled]

Allows BIOS to Select Serial Port1 Base Addresses.

↔ Select Screen
 ↑↓ Select Item
 + - Change Option
 F1 General Help
 F10 Save and Exit
 ESC Exit

Hardware Health Configuration

System Temperature	:48°C/118°F
CPU Temperature	:55°C/131°F
External Temperature Sensor	:N/A
System Fan Speed	:Fail
Fan Cruise Control	[Thermal]
Fan Setting	[51°C/123°F]
CPU Fan Speed	:Fail
Fan Cruise Control	[Thermal]
Fan Setting	[54°C/129°F]
External Fan Speed	:Fail
Fan Cruise Control	[Disabled]
Watchdog Function	[Disabled]

Disabled = Full speed.

Thermal: does regulate fan speed according to specified temperature

Speed: does regulate according to specified RPM.

↔ Select Screen
 ↑↓ Select Item
 + - Change Option
 F1 General Help
 F10 Save and Exit
 ESC Exit

Advanced

Voltage Monitor

Requested Core :1.1625 V
UcoreA :1.148 V

UcoreB :1.483 V
+3.3Vin :3.387 V
+5Vin :5.067 V
+12Vin :11.767 V
-12Vin :Good
+5USB :5.067 V

↔ Select Screen
↑↓ Select Item
F1 General Help
F10 Save and Exit
ESC Exit

v02.59+ (C) Copyright 1985-2005, American Megatrends, Inc.

BIOS SETUP UTILITY

Advanced

ACPI Settings

Suspend mode [S3 (STR)]
Repost Video on S3 Resume [No]
ACPI Version Features [ACPI v2.0]
USB Device Wakeup From S3/S4 [Disabled]

Select the ACPI state used for System Suspend.

↔ Select Screen
↑↓ Select Item
+- Change Option
F1 General Help
F10 Save and Exit
ESC Exit

v02.59+ (C) Copyright 1985-2005, American Megatrends, Inc.

Advanced

APM Configuration

Power Management/APM [Enabled]
 Video Power Down Mode [Suspend]
 Hard Disk Power Down Mode [Suspend]
 Suspend Time Out [Disabled]
 PS/2 Kbd/Mouse S4/S5 Wake [Disabled]
 Keyboard Wake Hotkey [Any key]

Power Button Mode [On/Off]

Advanced Resume Event Controls

Resume On Ring [Disabled]
 Resume On PME# [Disabled]
 Resume On RTC Alarm [Disabled]

Enable or disable
APM.

↔ Select Screen
 ↑↓ Select Item
 +- Change Option
 F1 General Help
 F10 Save and Exit
 ESC Exit

v02.59+ (C) Copyright 1985-2005, American Megatrends, Inc.

Advanced

PCI Express Configuration

Active State Power-Management [Disabled]

Enable/Disable
PCI Express L0s and
L1 link power
states.

↔ Select Screen
 ↑↓ Select Item
 +- Change Option
 F1 General Help
 F10 Save and Exit
 ESC Exit

v02.59+ (C) Copyright 1985-2005, American Megatrends, Inc.

BIOS SETUP UTILITY

Advanced

Configure Remote Access type and parameters

Remote Access [Disabled]

Select Remote Access type.

- ↔ Select Screen
- ↑↓ Select Item
- + - Change Option
- F1 General Help
- F10 Save and Exit
- ESC Exit

v02.59+ (C) Copyright 1985-2005, American Megatrends, Inc.

BIOS SETUP UTILITY

Advanced

USB Configuration

Module Version - 2.24.0-11.4

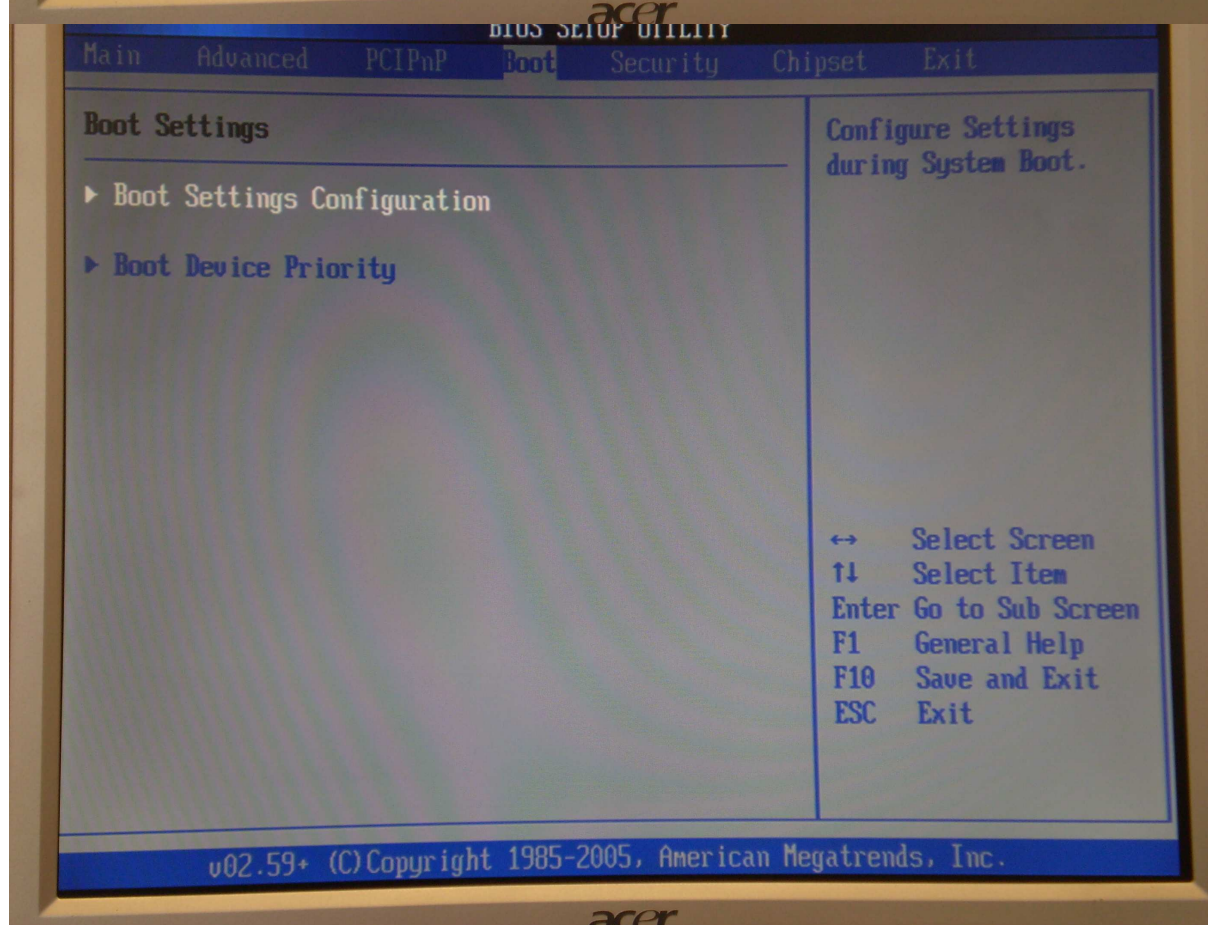
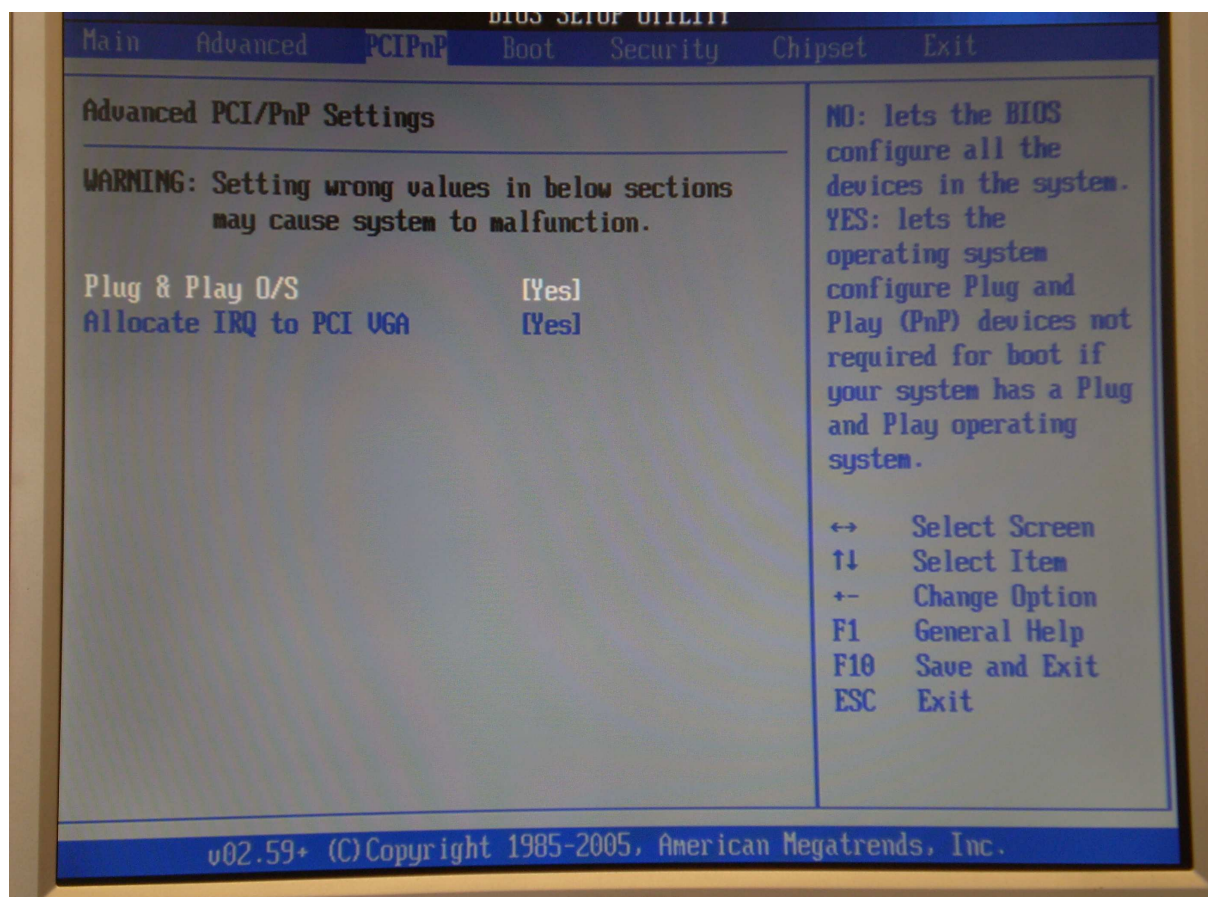
USB Devices Enabled :
1 Keyboard, 1 Mouse

Legacy USB Support [Enabled]
USB 2.0 Controller Mode [HiSpeed]

Enables support for legacy USB. AUTO option disables legacy support if no USB devices are connected.

- ↔ Select Screen
- ↑↓ Select Item
- + - Change Option
- F1 General Help
- F10 Save and Exit
- ESC Exit

v02.59+ (C) Copyright 1985-2005, American Megatrends, Inc.



Boot

Boot Settings Configuration

Quick Boot	[Enabled]
Quiet Boot	[Disabled]
AddOn ROM Display Mode	[Force BIOS]
Bootup Num-Lock	[On]
PS/2 Mouse Support	[Auto]
Wait For 'F1' If Error	[Enabled]
Hit 'DEL' Message Display	[Enabled]
Lock Keyboard before OS boot	[Disabled]
Allow F11 popup	[Disabled]
Interrupt 19 Capture	[Disabled]
Execute OEM extension	[Disabled]
Default init boot order	[0->4->3->5->2->1]
Force boot Device	[Disabled]

Allows BIOS to skip certain tests while booting. This will decrease the time needed to boot the system.

- ↔ Select Screen
- ↑↓ Select Item
- + - Change Option
- F1 General Help
- F10 Save and Exit
- ESC Exit



Boot

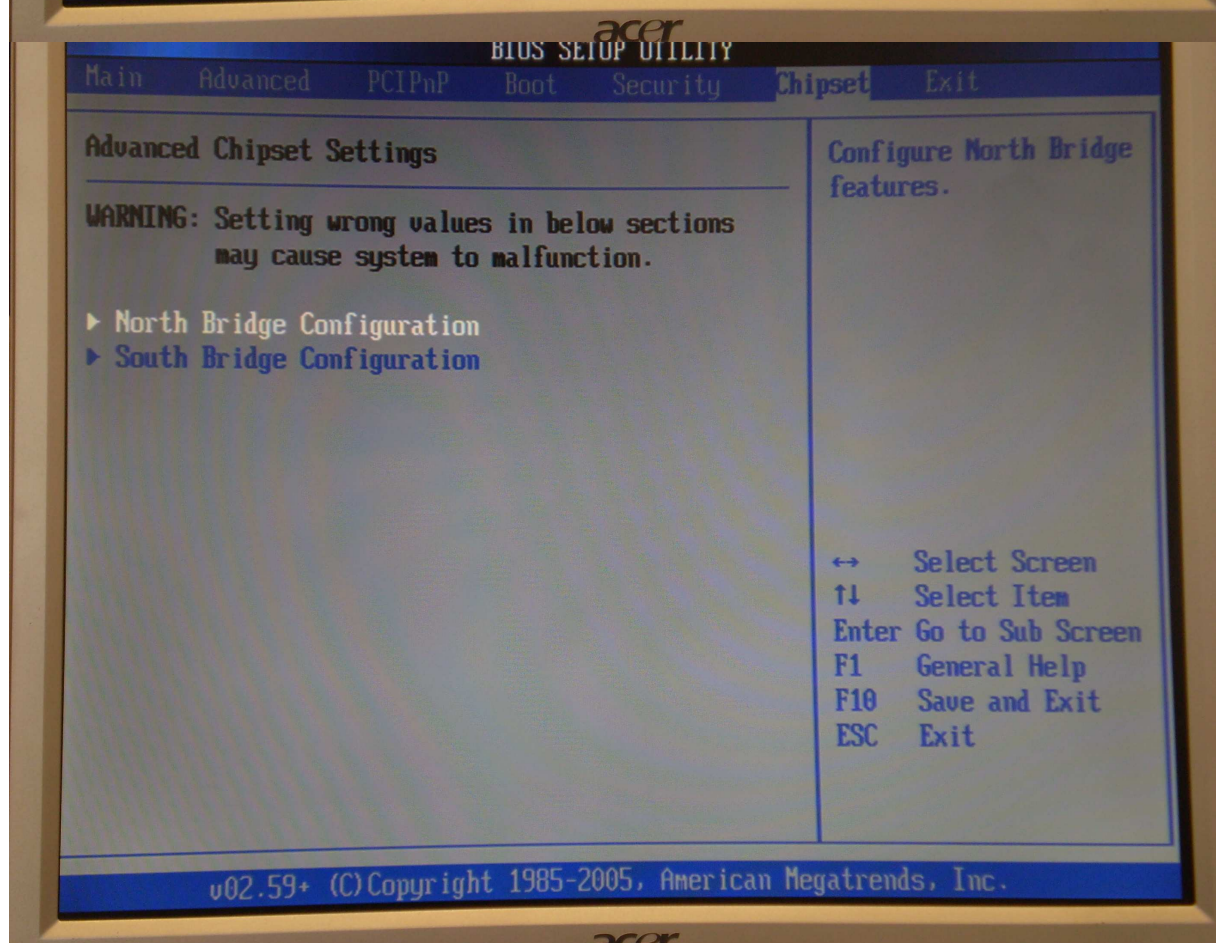
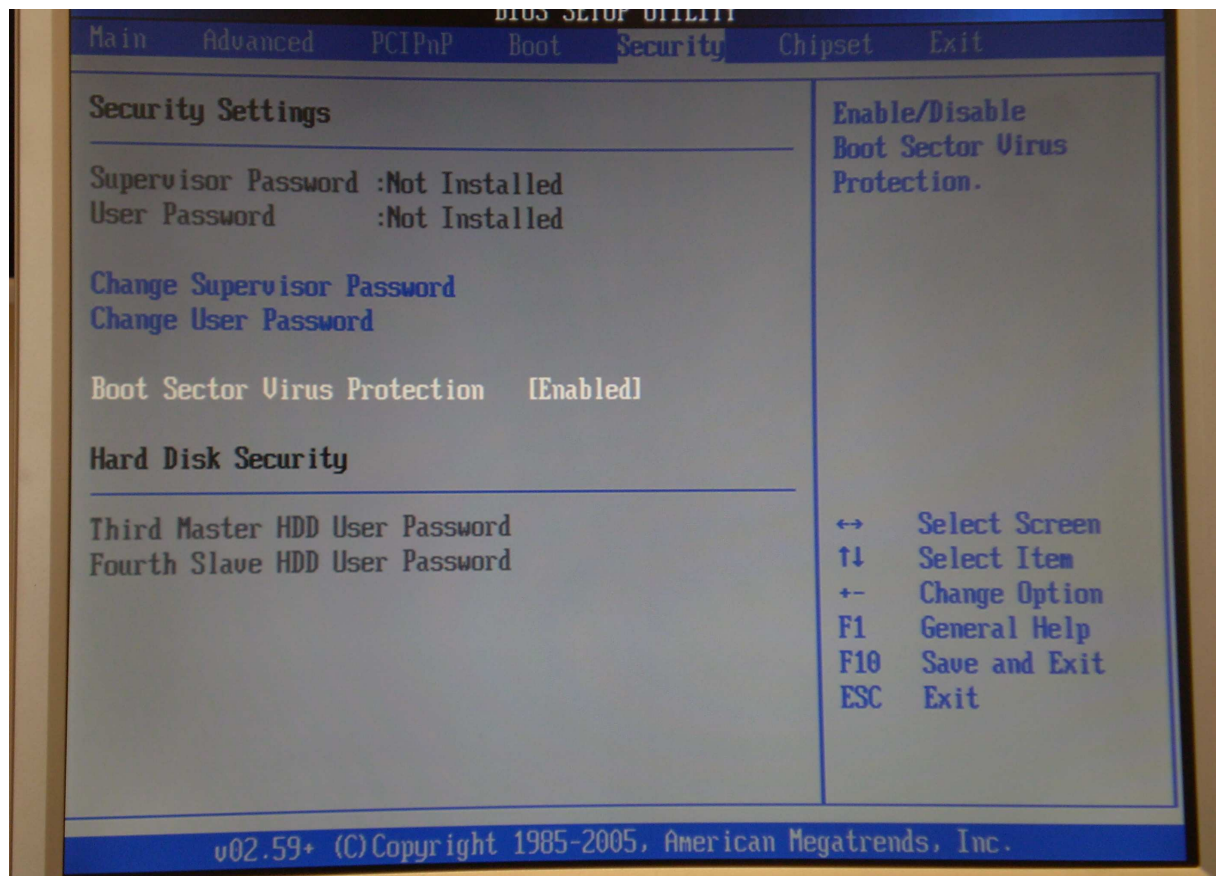
Boot Device Priority

1st Boot Device	[PM-Optiarc DVD RW]
2nd Boot Device	[Intel Volume0]

Specifies the boot sequence from the available devices.

A device enclosed in parenthesis has been disabled in the corresponding type menu.

- ↔ Select Screen
- ↑↓ Select Item
- + - Change Option
- F1 General Help
- F10 Save and Exit
- ESC Exit



North Bridge Chipset Configuration

Boots Graphic Adapter Priority [IGD]
 Internal Graphics Mode Select [Enabled, 8MB]

PEG Port Configuration

PEG Port [Auto]
 PEG Force x1 [Disabled]

▶ Video Function Configuration

Select which graphics controller to use as the primary boot device.

↔ Select Screen
 ↑↓ Select Item
 +- Change Option
 F1 General Help
 F10 Save and Exit
 ESC Exit

v02.59+ (C) Copyright 1985-2005, American Megatrends, Inc.

Video Function Configuration

DUMT Mode Select [Fixed Mode]
 DUMT/FIXED Memory [128MB]

Boot Type: [CRT]
 Backlight Signal Inversion [Disabled]
 LCDUCC Voltage [3.30]

LVDS [None]
 SDVO [N/A]

Options

Fixed Mode
 DUMT Mode
 Combo Mode

↔ Select Screen
 ↑↓ Select Item
 +- Change Option
 F1 General Help
 F10 Save and Exit
 ESC Exit

v02.59+ (C) Copyright 1985-2005, American Megatrends, Inc.

BIOS SETUP UTILITY

Chipset

South Bridge Chipset Configuration

USB Functions [8 USB Ports]
 USB 2.0 Controller [Enabled]
 Audio Controller [Enabled]
 Audio Jack Sensing [Auto]
 SMBUS Controller [Enabled]

Restore on AC Power Loss [Last State]

Options

Disabled
 2 USB Ports
 4 USB Ports
 6 USB Ports
 8 USB Ports

↔ Select Screen
 ↑↓ Select Item
 + - Change Option
 F1 General Help
 F10 Save and Exit
 ESC Exit

v02.59+ (C) Copyright 1985-2005, American Megatrends, Inc.

BIOS SETUP UTILITY

Main Advanced PCIPnP Boot Security Chipset **Exit**

Exit Options

Save Changes and Exit
 Discard Changes and Exit
 Discard Changes

Load Optimal Defaults
 Load Failsafe Defaults

Halt on invalid Time/Date [Enabled]
 Secure CMOS [Enabled]

Exit system setup after saving the changes.

F10 key can be used for this operation.

↔ Select Screen
 ↑↓ Select Item
 Enter Go to Sub Screen
 F1 General Help
 F10 Save and Exit
 ESC Exit

v02.59+ (C) Copyright 1985-2005, American Megatrends, Inc.