

BIOS SETUP UTILITY

Main Advanced PCIPnP Boot Security Chipset Exit

System Overview

AMIBIOS

ID : 986LCD15
 Build Date: 06/07/07
 PCB ID : 03
 Serial # : 00875762
 Part # : 67130400

Processor

Type : Intel(R) Core(TM)2 CPU T7200 @
 Speed : 2000MHz
 Count : 1

System Memory

Size : 2040MB

System Time [19:38:07]
 System Date [Mon 09/06/2010]

Use [ENTER], [TAB] or [SHIFT-TAB] to select a field.

Use [+] or [-] to configure system Time.

- ↔ Select Screen
- ↑↓ Select Item
- + - Change Field
- Tab Select Field
- F1 General Help
- F10 Save and Exit
- ESC Exit

v02.59+ (C) Copyright 1985-2005, American Megatrends, Inc.

BIOS SETUP UTILITY

Advanced

Configure advanced CPU settings

Module Version -13.04

Manufacturer: Intel
 Brand String: Intel(R) Core(TM)2 CPU T7200
 Frequency : 2.00GHz
 FSB Speed : 667MHz

 Cache L1 : 64 KB
 Cache L2 : 4096 KB

Execute Disable Bit [Enabled]
 Vanderpool Technology [Enabled]
 Intel(R) SpeedStep(tm) tech. [Maximum Speed]

When disabled, force the XD feature flag to always return 0.

- ↔ Select Screen
- ↑↓ Select Item
- + - Change Option
- F1 General Help
- F10 Save and Exit
- ESC Exit

v02.59+ (C) Copyright 1985-2005, American Megatrends, Inc.

BIOS SETUP UTILITY

Advanced

IDE Configuration

ATA/IDE Configuration [Enhanced]
Configure SATA as [IDE]
Configure SATA Channels [Before PATA]
Port0 SATA AHCI Speed: GEN 2 (3.0 Gb/sec)
Port1 SATA AHCI Speed: GEN 1 (1.5 Gb/sec)

▶ Primary IDE Master : [Hard Disk]
▶ Primary IDE Slave : [Not Detected]
▶ Secondary IDE Master : [ATAPI CDROM]
▶ Secondary IDE Slave : [Not Detected]
▶ Third IDE Master : [Not Detected]
▶ Third IDE Slave : [Not Detected]

Hard Disk Write Protect [Disabled]
IDE Detect Time Out (Sec) [35]
ATA(PI) 80Pin Cable Detection [Host & Device]

Options

Disabled
Compatible
Enhanced

↔ Select Screen
↑↓ Select Item
+- Change Option
F1 General Help
F10 Save and Exit
ESC Exit

Advanced

LAN Configuration

ETH1 Configuration [Enabled]
MAC Address : 00E0F4219FCB
ETH2 Configuration (Upper) [Enabled]
MAC Address : 00E0F4219FCC
ETH3 Configuration (Lower) [Enabled]
MAC Address : 00E0F4219FCD

Control of Ethernet
Devices and PXE boot

↔ Select Screen
↑↓ Select Item
+- Change Option
F1 General Help
F10 Save and Exit
ESC Exit

Advanced

FW/IEEE 1394 Configuration

FW/IEEE 1394 Configuration [Enabled]

Configure the Firewire Device.

- ↔ Select Screen
- ↑↓ Select Item
- + - Change Option
- F1 General Help
- F10 Save and Exit
- ESC Exit

v02.59+ (C) Copyright 1985-2005, American Megatrends, Inc.

BIOS SETUP UTILITY

Advanced

Configure Win627THF Super IO Chipset

Serial Port1 Address [3F8/IRQ4]
Serial Port2 Address [2F8/IRQ3]
Serial Port2 Mode [Normal]
Parallel Port Address [Disabled]
Serial Port3 Address [Disabled]
Serial Port4 Address [Disabled]

Allows BIOS to Select Serial Port1 Base Addresses.

- ↔ Select Screen
- ↑↓ Select Item
- + - Change Option
- F1 General Help
- F10 Save and Exit
- ESC Exit

v02.59+ (C) Copyright 1985-2005, American Megatrends, Inc.

BIOS SETUP UTILITY

Advanced

Hardware Health Configuration

System Temperature :17°C/62°F
 CPU Temperature :42°C/107°F
 External Temperature Sensor :N/A

System Fan Speed :Fail
 Fan Cruise Control [Thermal]
 Fan Setting [39°C/102°F]

CPU Fan Speed :Fail
 Fan Cruise Control [Thermal]
 Fan Setting [54°C/129°F]

External Fan Speed :Fail
 Fan Cruise Control [Disabled]

Watchdog Function [Disabled]

Disabled = Full speed.

Thermal: does regulate fan speed according to specified temperature

Speed: does regulate according to specified RPM.

- ↔ Select Screen
- ↑↓ Select Item
- + - Change Option
- F1 General Help
- F10 Save and Exit
- ESC Exit

v02.59+ (C) Copyright 1985-2005, American Megatrends, Inc.

Advanced

Voltage Monitor

Requested Core :1.1625 V
 UcoreA :1.148 V

UcoreB :1.483 V
 +3.3Vin :3.306 V
 +5Vin :4.931 V
 +12Vin :11.767 V
 -12Vin :Good
 +5USB :4.931 V

- ↔ Select Screen
- ↑↓ Select Item
- F1 General Help
- F10 Save and Exit
- ESC Exit

v02.59+ (C) Copyright 1985-2005, American Megatrends, Inc.

BIOS SETUP UTILITY

Advanced

ACPI Settings

Suspend mode [S3 (STR)]
 Repost Video on S3 Resume [No]
 ACPI Version Features [ACPI v2.0]

Select the ACPI state used for System Suspend.

↔ Select Screen
 ↑↓ Select Item
 +- Change Option
 F1 General Help
 F10 Save and Exit
 ESC Exit

BIOS SETUP UTILITY

Advanced

APM Configuration

Power Management/APM [Enabled]
 Video Power Down Mode [Disabled]
 Hard Disk Power Down Mode [Disabled]
 Suspend Time Out [Disabled]
 Throttle Slow Clock Ratio [50%]
 PS/2 Kbd/Mouse S4/S5 Wake [Disabled]
 Keyboard Wake Hotkey [Any key]

Power Button Mode [On/Off]

Advanced Resume Event Controls

Resume On Ring [Disabled]
 Resume On RTC Alarm [Disabled]

Enable or disable APM.

↔ Select Screen
 ↑↓ Select Item
 +- Change Option
 F1 General Help
 F10 Save and Exit
 ESC Exit

BIOS SETUP UTILITY

Advanced

PCI Express Configuration

Active State Power-Management [Disabled]

Enable/Disable
PCI Express L0s and
L1 link power
states.

- ↔ Select Screen
- ↑↓ Select Item
- + - Change Option
- F1 General Help
- F10 Save and Exit
- ESC Exit

v02.59+ (C) Copyright 1985-2005, American Megatrends, Inc.

BIOS SETUP UTILITY

Advanced

Configure Remote Access type and parameters

Remote Access [Disabled]

Select Remote Access
type.

- ↔ Select Screen
- ↑↓ Select Item
- + - Change Option
- F1 General Help
- F10 Save and Exit
- ESC Exit

v02.59+ (C) Copyright 1985-2005, American Megatrends, Inc.

BIOS SETUP UTILITY

Advanced

USB Configuration

Module Version - 2.24.0-11.4

USB Devices Enabled :
1 Keyboard, 2 Mice

Legacy USB Support [Enabled]
USB 2.0 Controller Mode [HiSpeed]

▶ USB Mass Storage Device Configuration

Enables support for legacy USB. AUTO option disables legacy support if no USB devices are connected.

- ↔ Select Screen
- ↑↓ Select Item
- + - Change Option
- F1 General Help
- F10 Save and Exit
- ESC Exit

v02.59+ (C) Copyright 1985-2005, American Megatrends, Inc.

BIOS SETUP UTILITY

Advanced

USB Mass Storage Device Configuration

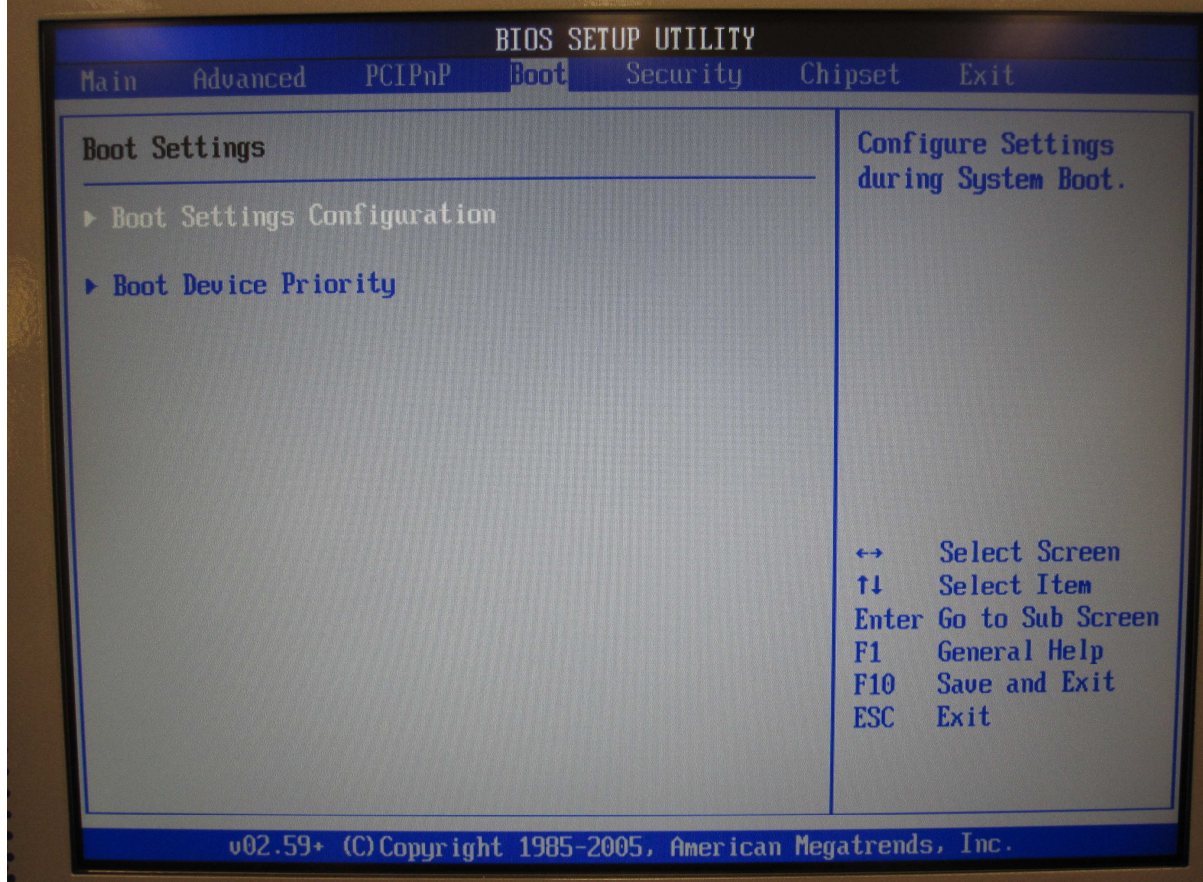
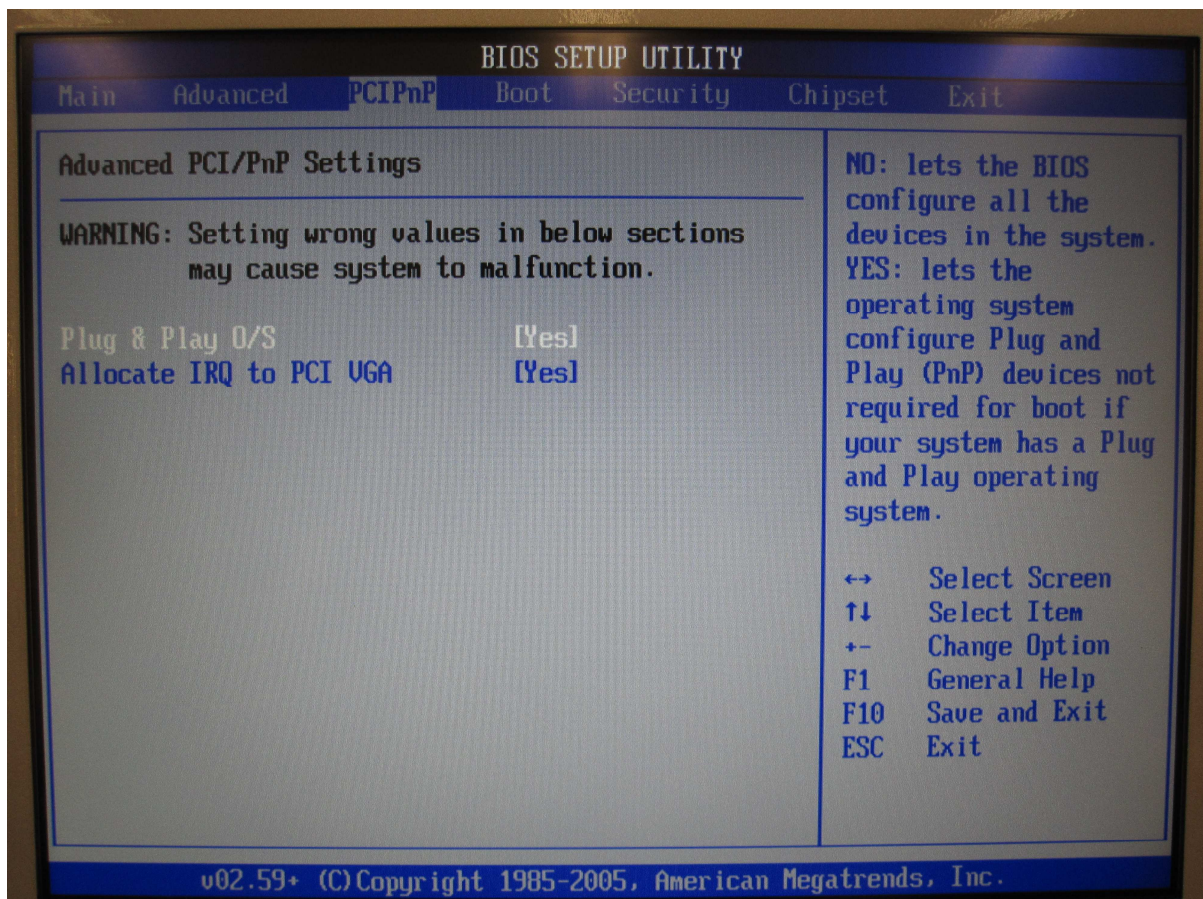
USB Mass Storage Reset Delay [20 Sec]

Device #1 USB Hotplug FDD
Emulation Type [Auto]

Number of seconds POST waits for the USB mass storage device after start unit command.

- ↔ Select Screen
- ↑↓ Select Item
- + - Change Option
- F1 General Help
- F10 Save and Exit
- ESC Exit

v02.59+ (C) Copyright 1985-2005, American Megatrends, Inc.



BIOS SETUP UTILITY

Boot

Boot Settings Configuration

Quick Boot	[Enabled]
Quiet Boot	[Disabled]
AddOn ROM Display Mode	[Force BIOS]
Bootup Num-Lock	[On]
PS/2 Mouse Support	[Auto]
Wait For 'F1' If Error	[Enabled]
Hit 'DEL' Message Display	[Enabled]
Interrupt 19 Capture	[Disabled]
Auto Adjust Boot Priority	[Yes]
Removable Devices 1st	[No]
Force boot Device	[Disabled]

Allows BIOS to skip certain tests while booting. This will decrease the time needed to boot the system.

- ↔ Select Screen
- ↑↓ Select Item
- + - Change Option
- F1 General Help
- F10 Save and Exit
- ESC Exit

BIOS SETUP UTILITY

Boot

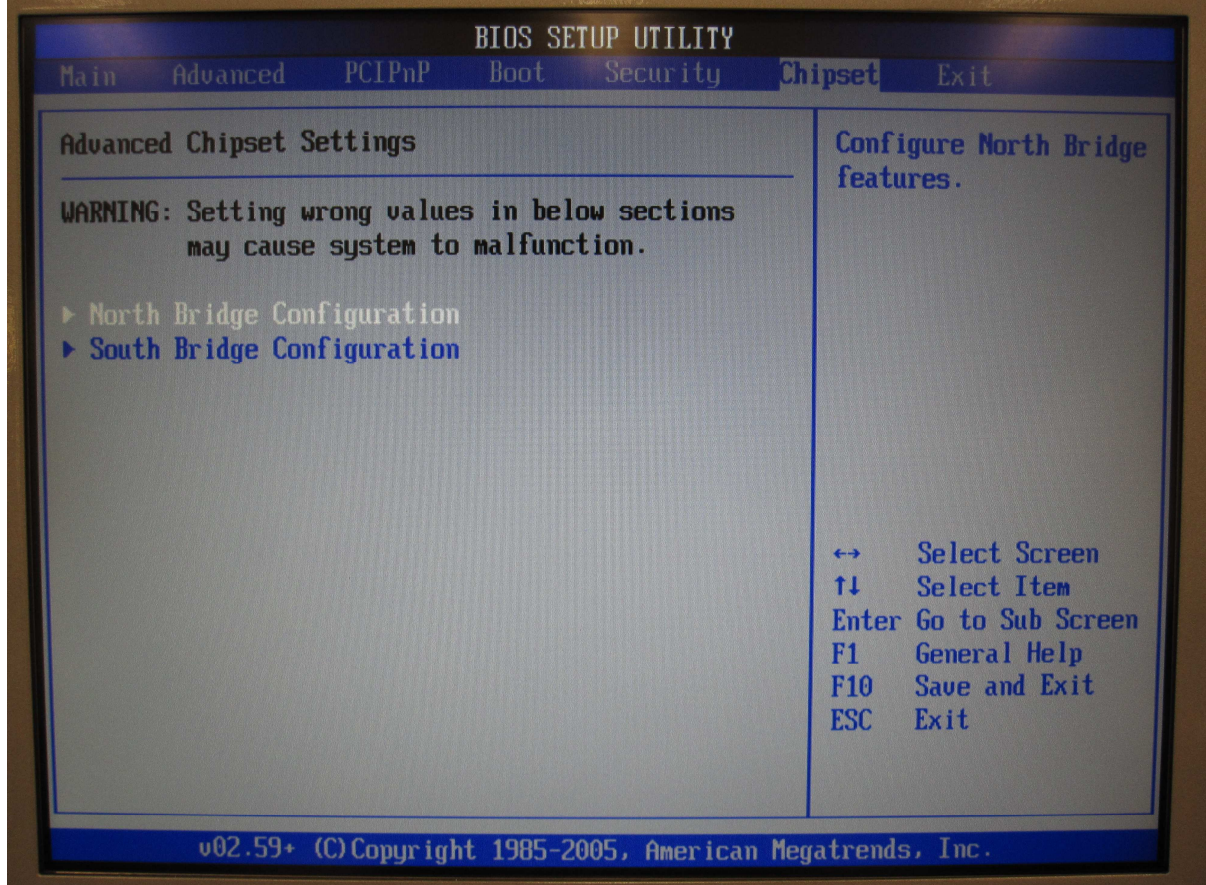
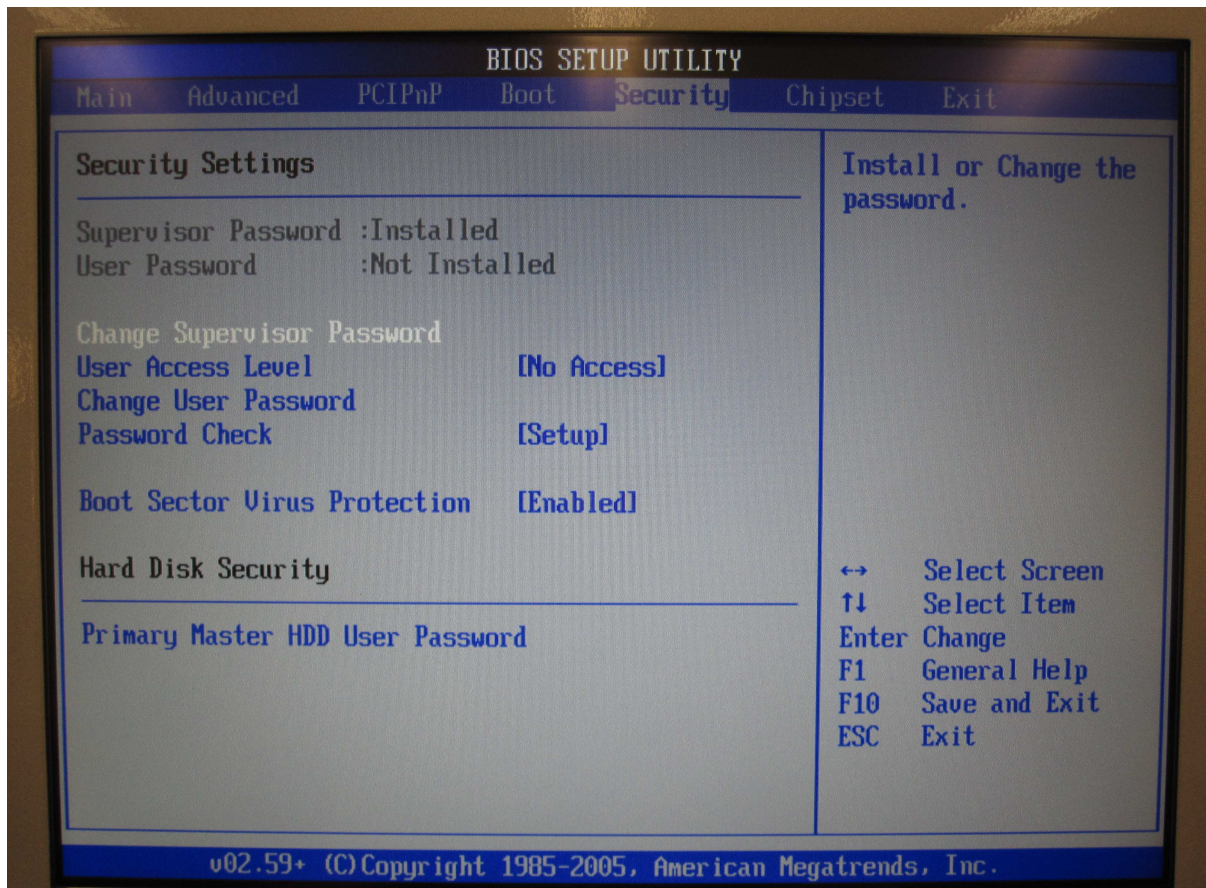
Boot Device Priority

1st Boot Device	[SM-Optiarc DVD RW]
2nd Boot Device	[PM-WDC WD3000HLFS-]
3rd Boot Device	[Disabled]

Specifies the boot sequence from the available devices.

A device enclosed in parenthesis has been disabled in the corresponding type menu.

- ↔ Select Screen
- ↑↓ Select Item
- + - Change Option
- F1 General Help
- F10 Save and Exit
- ESC Exit



BIOS SETUP UTILITY

Chipset

North Bridge Chipset Configuration

Boots Graphic Adapter Priority [IGD]
Internal Graphics Mode Select [Enabled, 8MB]

PEG Port Configuration

PEG Port [Auto]
PEG Force x1 [Disabled]

▶ Video Function Configuration

Select which graphics controller to use as the primary boot device.

- ↔ Select Screen
- ↑↓ Select Item
- + - Change Option
- F1 General Help
- F10 Save and Exit
- ESC Exit

BIOS SETUP UTILITY

Chipset

Video Function Configuration

DUMT Mode Select [Fixed Mode]
DUMT/FIXED Memory [128MB]

Boot Type: [CRT+LFP]
Backlight Signal Inversion [Disabled]
LCDUCC Voltage [3.3V]

LVDS [LTM150XH-L06 65MHz]
SDVO [N/A]

- Options**
- Fixed Mode
 - DUMT Mode
 - Combo Mode

- ↔ Select Screen
- ↑↓ Select Item
- + - Change Option
- F1 General Help
- F10 Save and Exit
- ESC Exit

BIOS SETUP UTILITY

Chipset

South Bridge Chipset Configuration

USB Functions	[8 USB Ports]
USB 2.0 Controller	[Enabled]
Audio Controller	[Enabled]
Audio Jack Sensing	[Disabled]
SMBUS Controller	[Enabled]
Restore on AC Power Loss	[Power On]

Options

Disabled
 2 USB Ports
 4 USB Ports
 6 USB Ports
 8 USB Ports

↔ Select Screen
 ↑↓ Select Item
 +- Change Option
 F1 General Help
 F10 Save and Exit
 ESC Exit

v02.59+ (C) Copyright 1985-2005, American Megatrends, Inc.

BIOS SETUP UTILITY

Main Advanced PCIPnP Boot Security Chipset **Exit**

Exit Options

Save Changes and Exit
 Discard Changes and Exit
 Discard Changes

Load Optimal Defaults
 Load Failsafe Defaults

Halt on invalid Time/Date	[Enabled]
Secure CMOS	[Enabled]
Setup Fingerprint	: 0418CCCB

Exit system setup after saving the changes.

F10 key can be used for this operation.

↔ Select Screen
 ↑↓ Select Item
 Enter Go to Sub Screen
 F1 General Help
 F10 Save and Exit
 ESC Exit

v02.59+ (C) Copyright 1985-2005, American Megatrends, Inc.