

BIOS SETUP UTILITY

Advanced

Configure advanced CPU settings
Module Version -13.04

When disabled, force the XD feature flag to always return 0.

Manufacturer: Intel
Brand String: Intel(R) Core(TM)2 CPU T7400
Frequency : 2.16GHz
FSB Speed : 667MHz

Cache L1 : 64 KB
Cache L2 : 4096 KB

Execute Disable Bit [Enabled]
Core Multi-Processing [Enabled]
Underpool Technology [Enabled]
Intel(R) SpeedStep(tm) tech. [Maximum Speed]

↔ Select Screen
↑↓ Select Item
+- Change Option
F1 General Help
F10 Save and Exit
ESC Exit

BIOS SETUP UTILITY

Advanced

IDE Configuration

Options

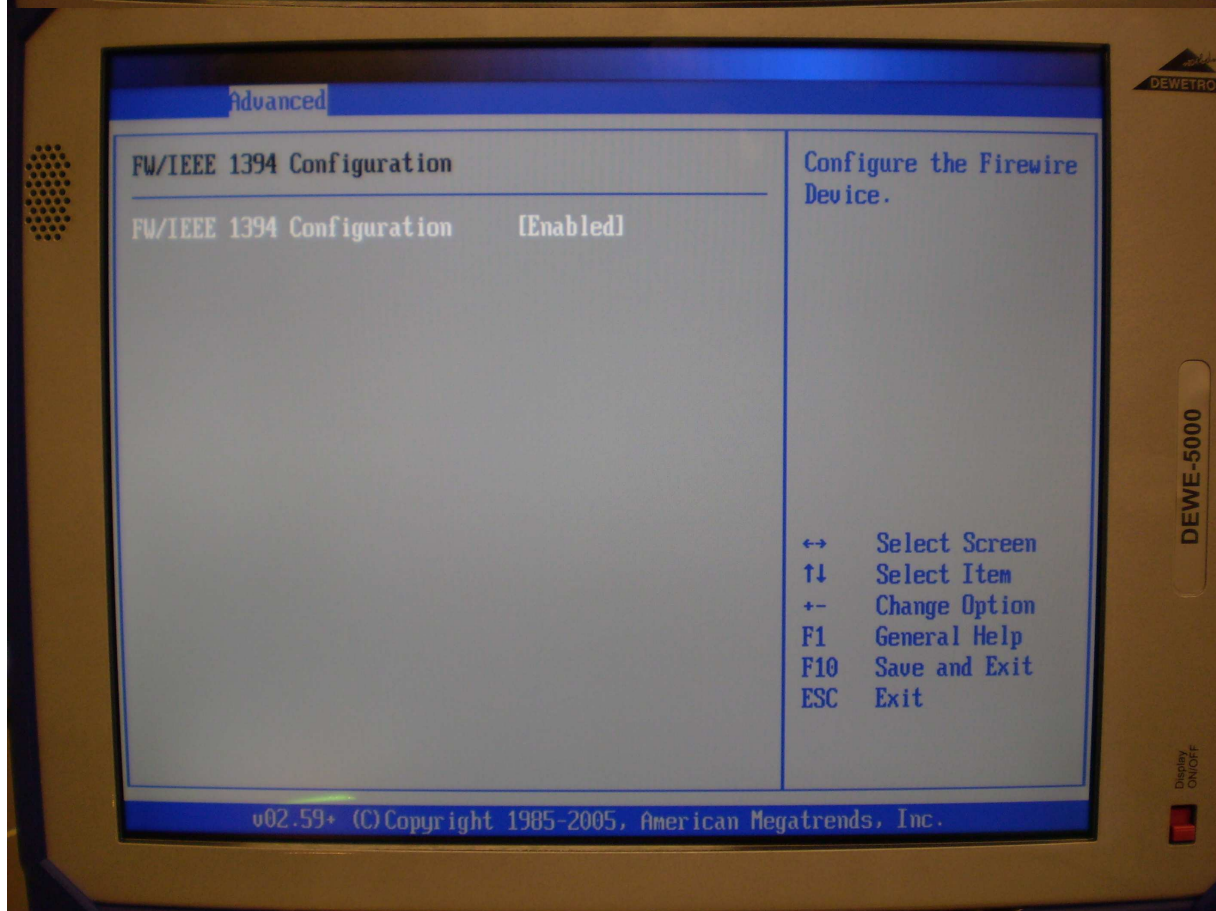
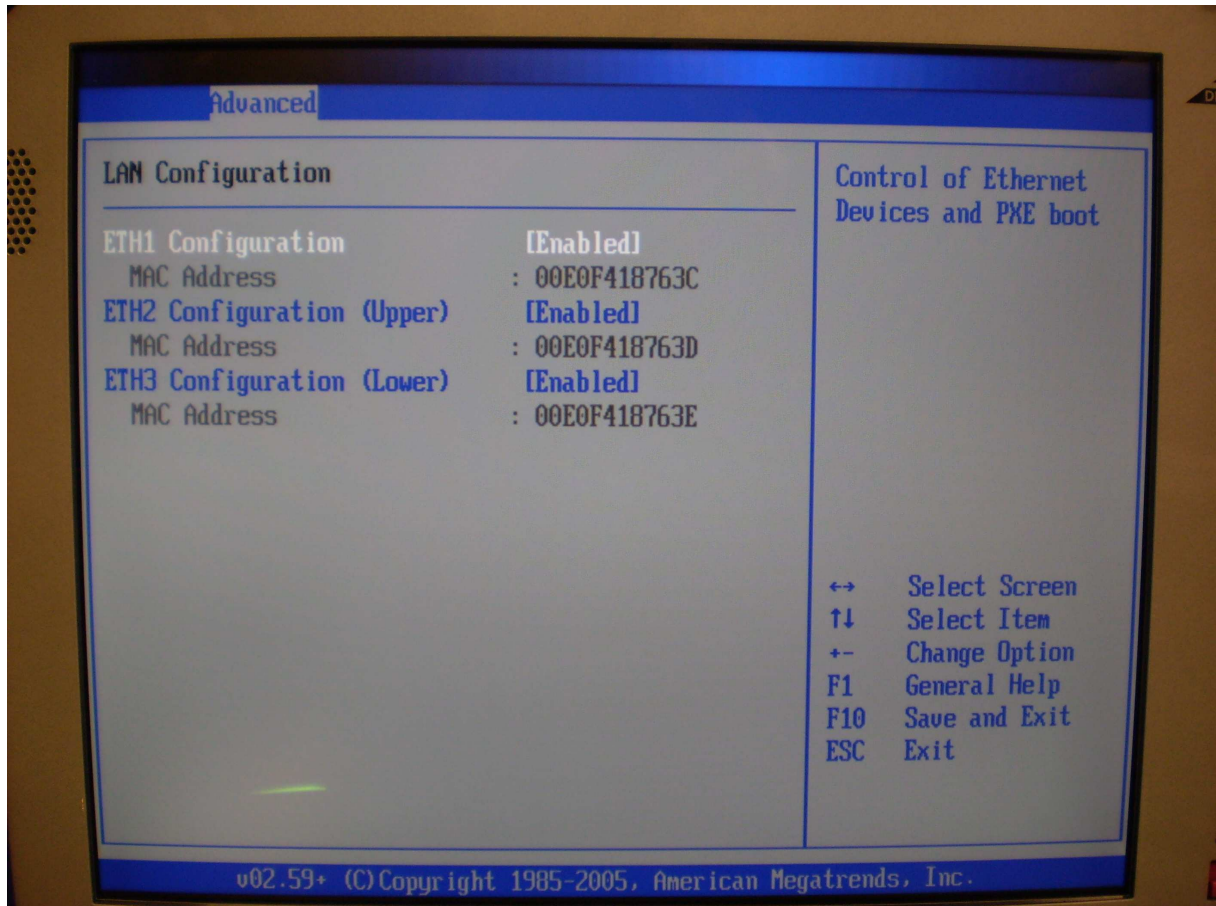
ATA/IDE Configuration [Enhanced]
Configure SATA as [IDE]
Configure SATA Channels [Before PATA]
Port0 SATA AHCI Speed: GEN 2 (3.0 Gb/sec)
Port1 SATA AHCI Speed: GEN 1 (1.5 Gb/sec)

Disabled
Compatible
Enhanced

▶ Primary IDE Master : [Hard Disk]
▶ Primary IDE Slave : [Not Detected]
▶ Secondary IDE Master : [ATAPI CDROM]
▶ Secondary IDE Slave : [Not Detected]
▶ Third IDE Master : [Not Detected]
▶ Third IDE Slave : [Not Detected]

↔ Select Screen
↑↓ Select Item
+- Change Option
F1 General Help
F10 Save and Exit
ESC Exit

Hard Disk Write Protect [Disabled]
IDE Detect Time Out (Sec) [35]
ATA(Pi) 80Pin Cable Detection [Host & Device]



BIOS SETUP UTILITY

Advanced

Configure Win627THF Super IO Chipset

Serial Port1 Address	[3F8/IRQ4]
Serial Port2 Address	[Disabled]
Parallel Port Address	[Disabled]
Serial Port3 Address	[Disabled]
Serial Port4 Address	[Disabled]

Allows BIOS to Select Serial Port1 Base Addresses.

- ↔ Select Screen
- ↑↓ Select Item
- + - Change Option
- F1 General Help
- F10 Save and Exit
- ESC Exit

v02.59+ (C) Copyright 1985-2005, American Megatrends, Inc.



DEWE-5000

Display ON/OFF



BIOS SETUP UTILITY

Advanced

Hardware Health Configuration

System Temperature	:44°C/111°F
CPU Temperature	:56°C/132°F
External Temperature Sensor	:N/A
System Fan Speed	:Fail
Fan Cruise Control	[Thermal]
Fan Setting	[51°C/123°F]
CPU Fan Speed	:Fail
Fan Cruise Control	[Thermal]
Fan Setting	[54°C/129°F]
External Fan Speed	:Fail
Fan Cruise Control	[Disabled]
Watchdog Function	[Disabled]

Disabled = Full speed.

Thermal: does regulate fan speed according to specified temperature

Speed: does regulate according to specified RPM.

- ↔ Select Screen
- ↑↓ Select Item
- + - Change Option
- F1 General Help
- F10 Save and Exit
- ESC Exit

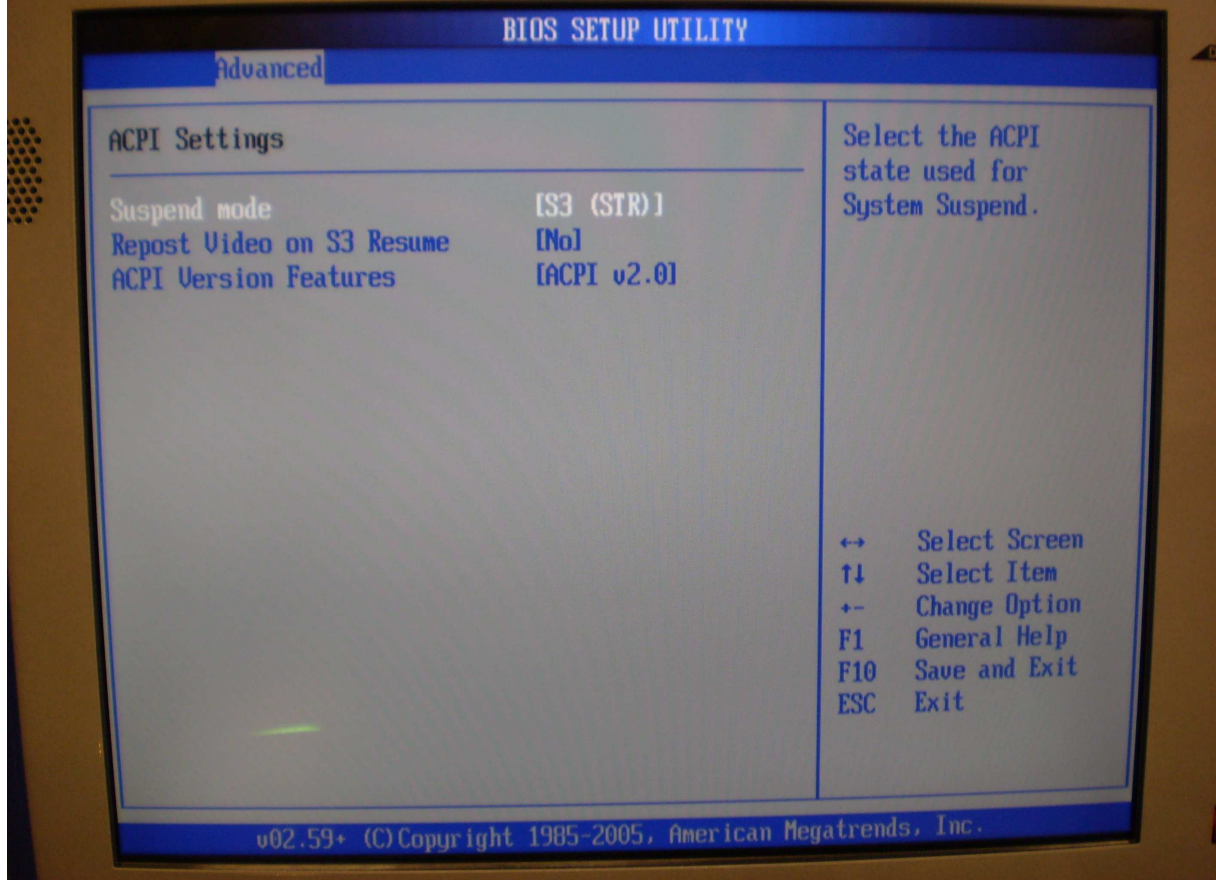
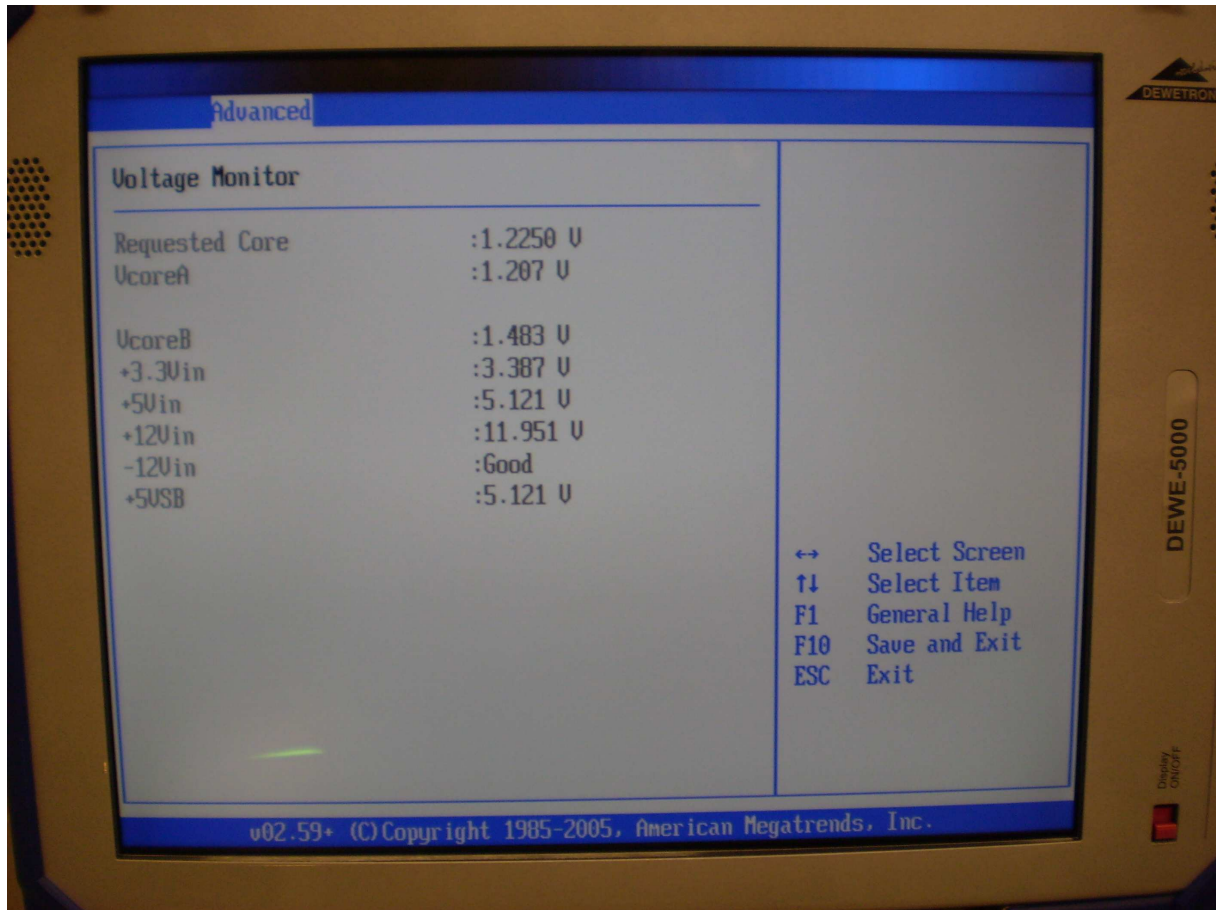
v02.59+ (C) Copyright 1985-2005, American Megatrends, Inc.



DEWE-5000

Display ON/OFF





BIOS SETUP UTILITY

Advanced

APM Configuration

Enable or disable APM.

Power Management/APM [Enabled]
 Video Power Down Mode [Disabled]
 Hard Disk Power Down Mode [Disabled]
 Suspend Time Out [Disabled]
 Throttle Slow Clock Ratio [50%]
 PS/2 Kbd/Mouse S4/S5 Wake [Enabled]
 Keyboard Wake Hotkey [Any key]

Power Button Mode [On/Off]

Advanced Resume Event Controls
 Resume On Ring [Disabled]
 Resume On RTC Alarm [Disabled]

↔ Select Screen
 ↑↓ Select Item
 +- Change Option
 F1 General Help
 F10 Save and Exit
 ESC Exit

DEWE-5000

Display ON/OFF

BIOS SETUP UTILITY

Advanced

PCI Express Configuration

Enable/Disable PCI Express L0s and L1 link power states.

Active State Power-Management [Disabled]

↔ Select Screen
 ↑↓ Select Item
 +- Change Option
 F1 General Help
 F10 Save and Exit
 ESC Exit

DEWE-5000

Display ON/OFF

BIOS SETUP UTILITY

Advanced

Configure Remote Access type and parameters

Remote Access [Disabled]

Select Remote Access type.

- ↔ Select Screen
- ↑↓ Select Item
- + - Change Option
- F1 General Help
- F10 Save and Exit
- ESC Exit

v02.59+ (C) Copyright 1985-2005, American Megatrends, Inc.

BIOS SETUP UTILITY

Advanced

USB Configuration

Module Version - 2.24.0-11.4

USB Devices Enabled :
1 Keyboard, 1 Mouse

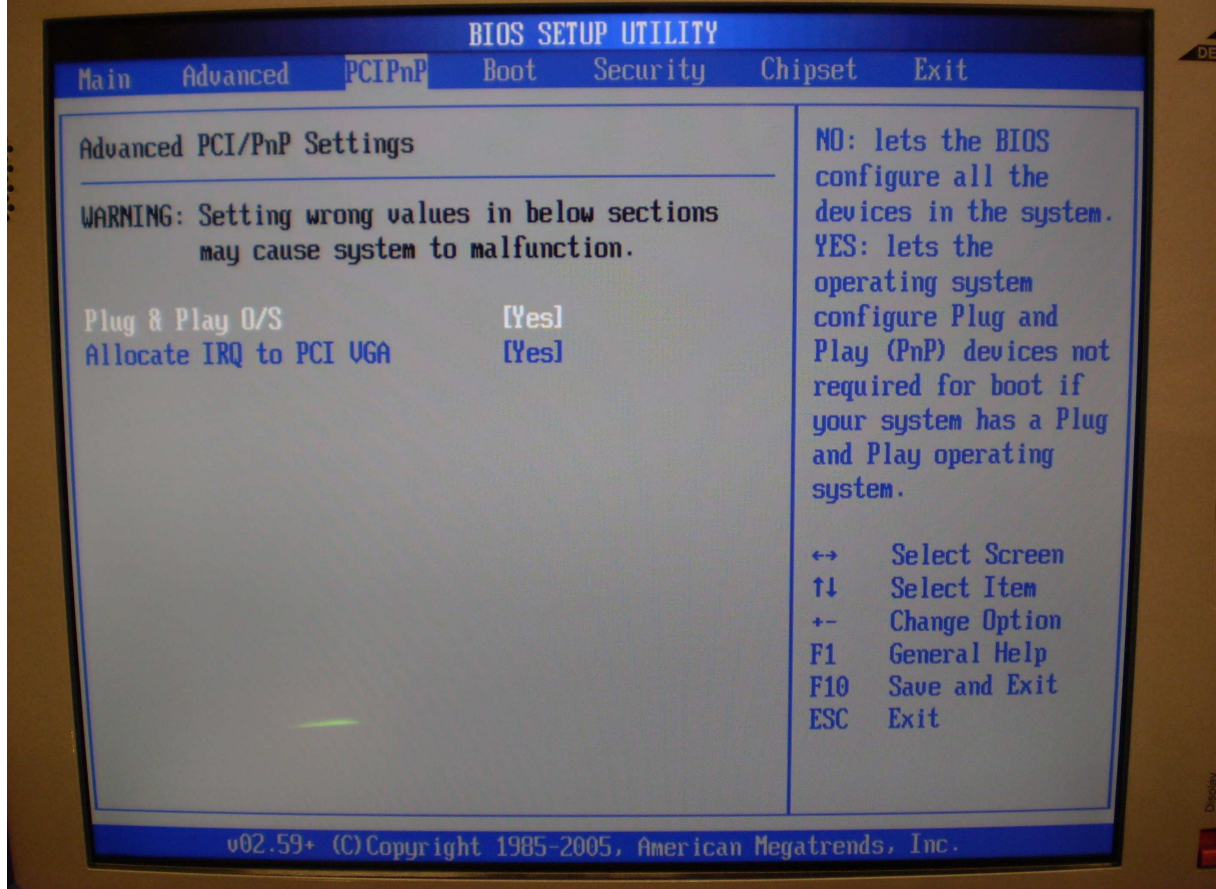
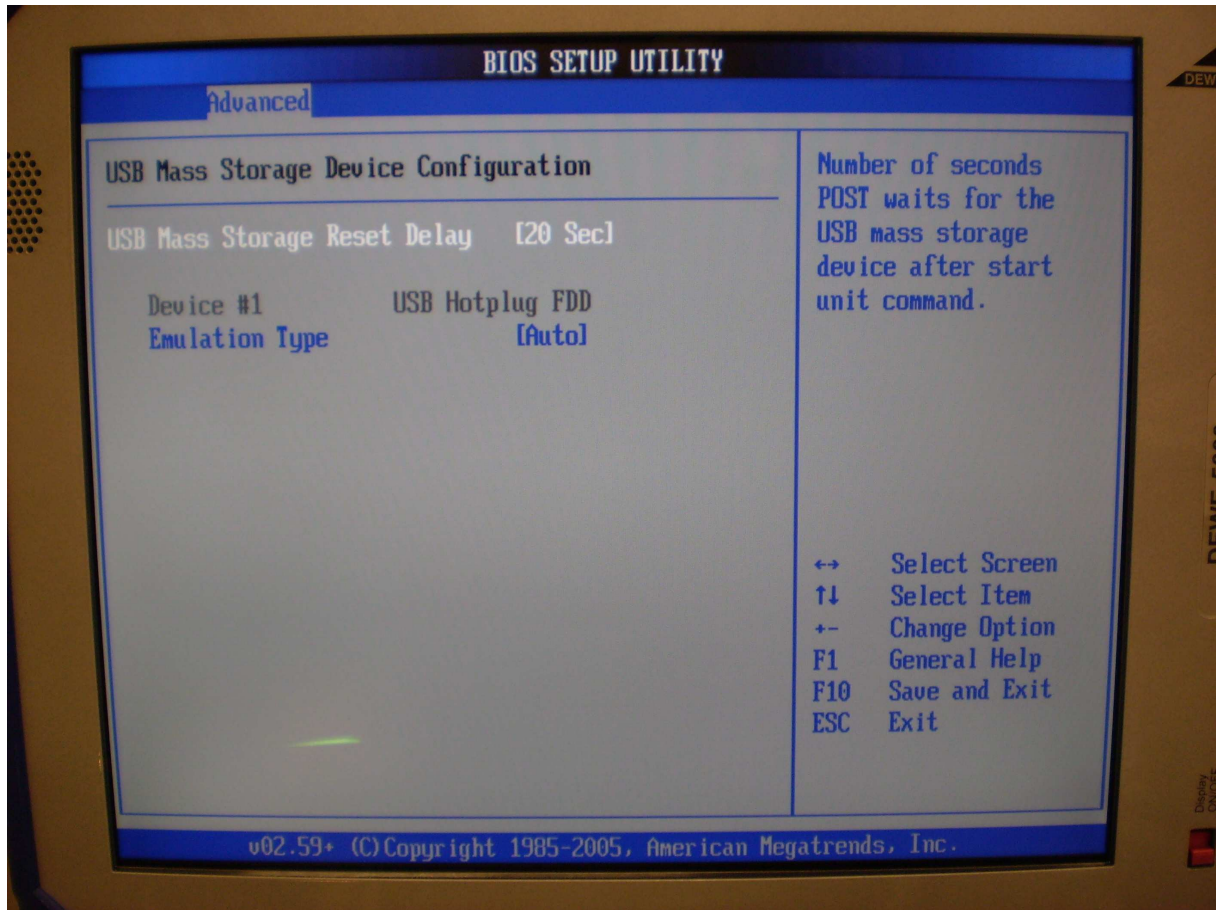
Legacy USB Support [Enabled]
USB 2.0 Controller Mode [HiSpeed]

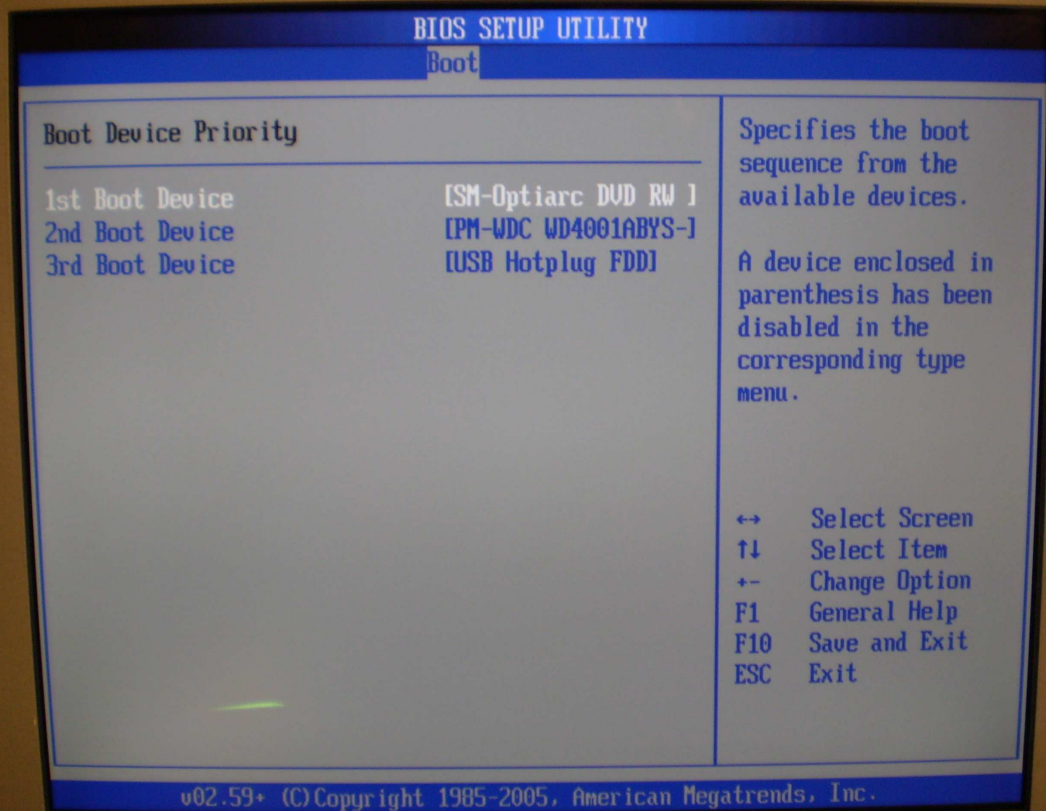
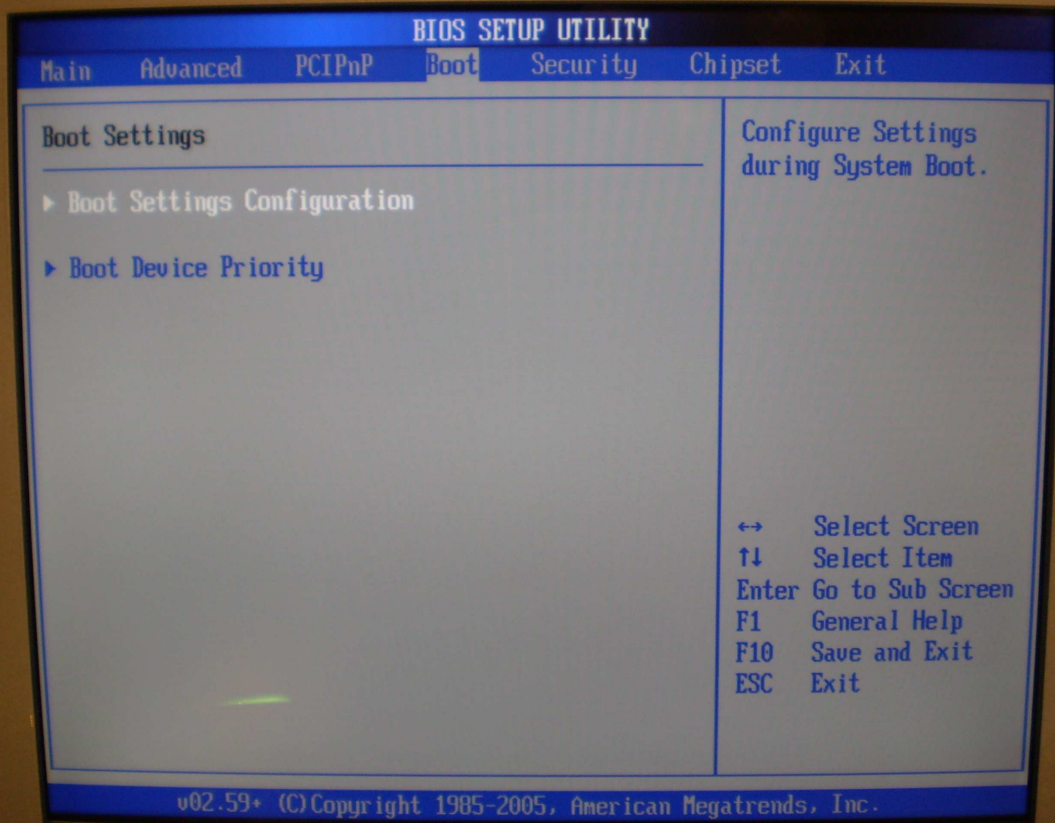
▶ USB Mass Storage Device Configuration

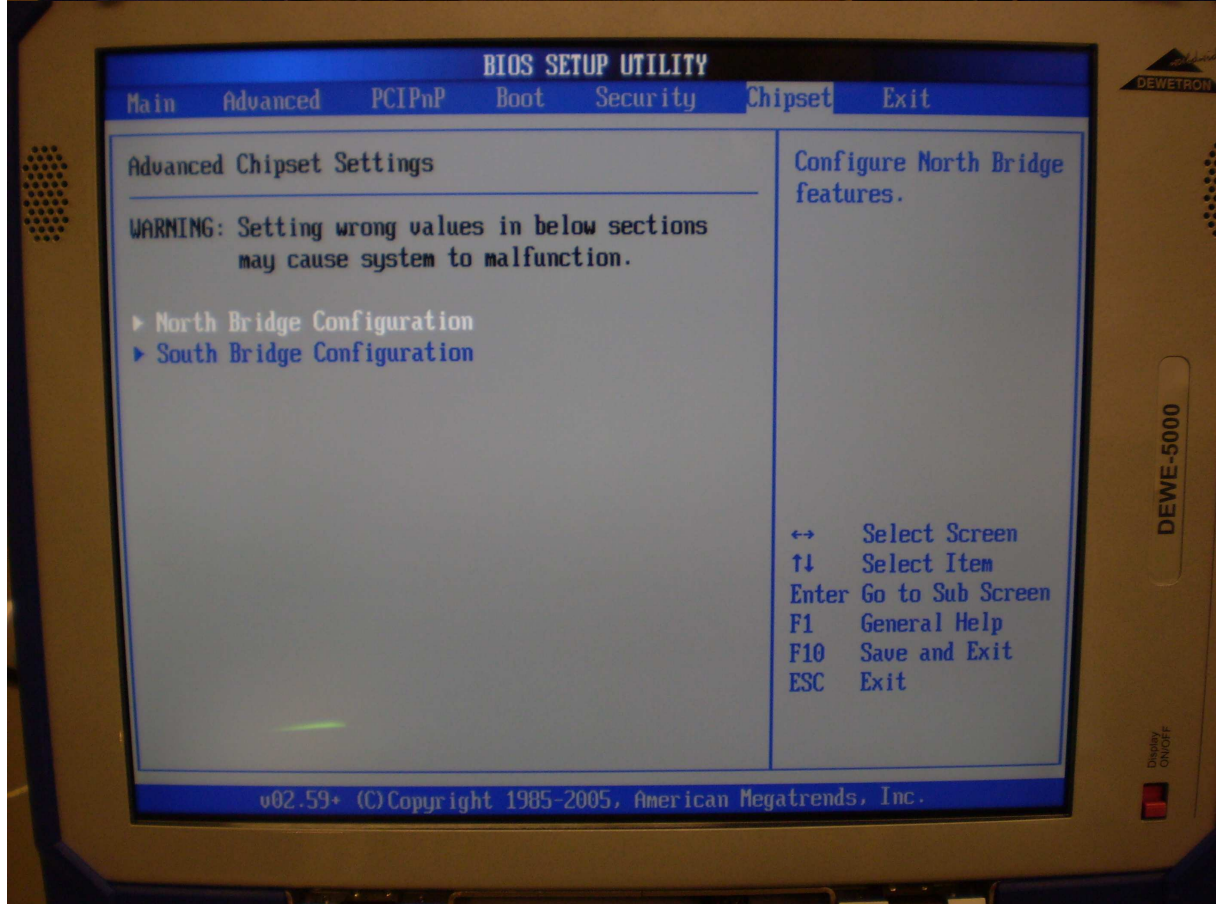
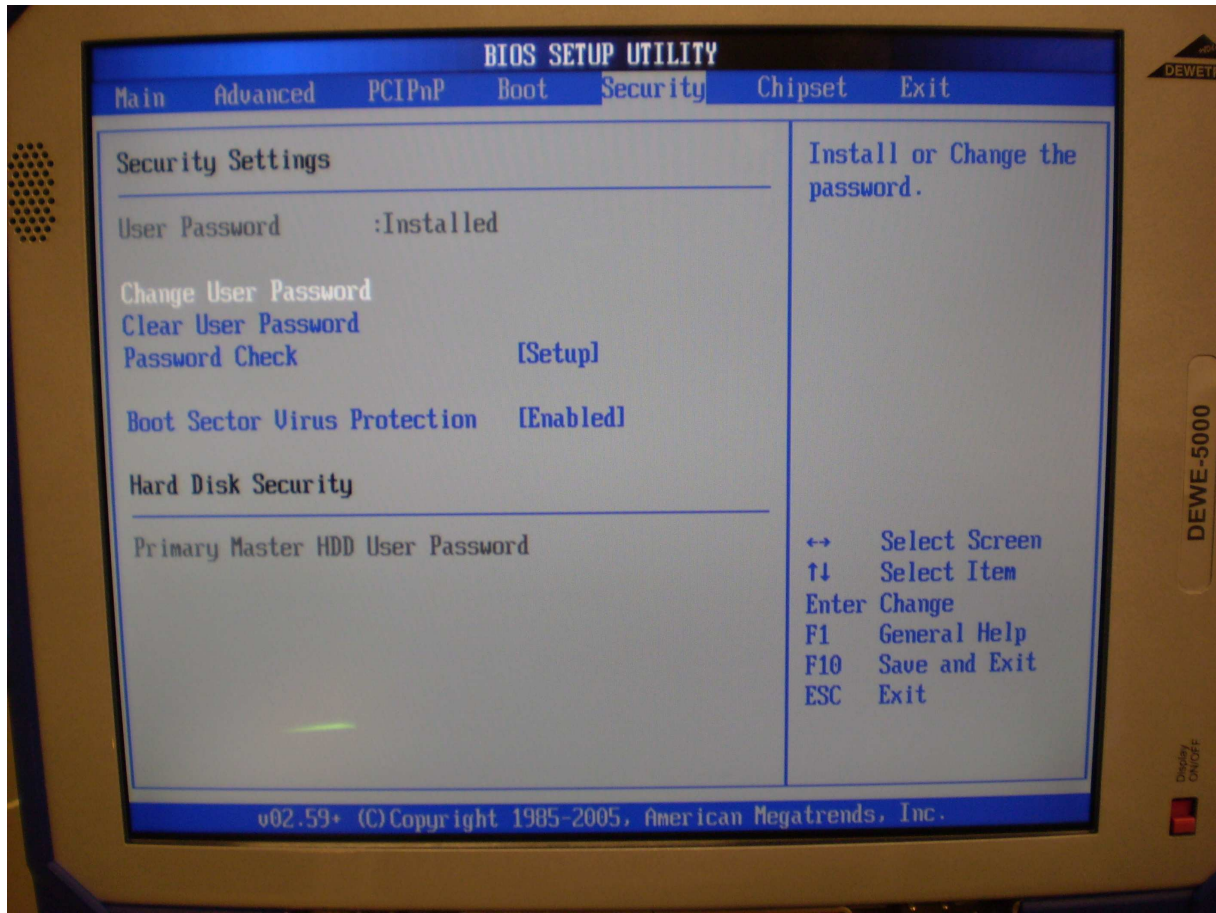
Enables support for legacy USB. AUTO option disables legacy support if no USB devices are connected.

- ↔ Select Screen
- ↑↓ Select Item
- + - Change Option
- F1 General Help
- F10 Save and Exit
- ESC Exit

v02.59+ (C) Copyright 1985-2005, American Megatrends, Inc.







BIOS SETUP UTILITY

Chipset

North Bridge Chipset Configuration

Boots Graphic Adapter Priority [IGD]
Internal Graphics Mode Select [Enabled, 8MB]

PEG Port Configuration

PEG Port [Auto]
PEG Force x1 [Disabled]

▶ Video Function Configuration

Select which graphics controller to use as the primary boot device.

- ↔ Select Screen
- ↑↓ Select Item
- + - Change Option
- F1 General Help
- F10 Save and Exit
- ESC Exit

BIOS SETUP UTILITY

Chipset

Video Function Configuration

DUMT Mode Select [Fixed Mode]
DUMT/FIXED Memory [128MB]

Boot Type: [CRT+LFP]
Backlight Signal Inversion [Disabled]
LCDUCC Voltage [5V]

LVDS [LTM170E8-L02]
SDVO [N/A]

Options

Fixed Mode
DUMT Mode
Combo Mode

- ↔ Select Screen
- ↑↓ Select Item
- + - Change Option
- F1 General Help
- F10 Save and Exit
- ESC Exit

BIOS SETUP UTILITY

Chipset

South Bridge Chipset Configuration		Options
USB Functions	[8 USB Ports]	Disabled
USB 2.0 Controller	[Enabled]	2 USB Ports
Audio Controller	[Enabled]	4 USB Ports
Audio Jack Sensing	[Disabled]	6 USB Ports
SMBUS Controller	[Enabled]	8 USB Ports
Restore on AC Power Loss	[Last State]	

↔ Select Screen
 ↑↓ Select Item
 + - Change Option
 F1 General Help
 F10 Save and Exit
 ESC Exit

v02.59+ (C) Copyright 1985-2005, American Megatrends, Inc.

BIOS SETUP UTILITY

Main Advanced PCIPnP Boot Security Chipset Exit

Exit Options	Enable will store current CMOS in non volatile ram. This will maintain the settings even if battery is failing.
Save Changes and Exit	
Discard Changes and Exit	
Discard Changes	
Load Optimal Defaults	
Load Failsafe Defaults	
Halt on invalid Time/Date	[Enabled]
Secure CMOS	[Enabled]

↔ Select Screen
 ↑↓ Select Item
 + - Change Option
 F1 General Help
 F10 Save and Exit
 ESC Exit

v02.59+ (C) Copyright 1985-2005, American Megatrends, Inc.