



Automotive
Energy & Power Analysis
Aerospace & Defense
Transportation
General Test & Measurement

Total recovery (backup to recovery drive)

Software reference manual



ISO9001

Re-inventing Data Acquisition



Copyright © DEWETRON elektronische Messgeraete Ges.m.b.H.

This document contains information which is protected by copyright. All rights are reserved. Reproduction, adaptation, or translation without prior written permission is prohibited, except as allowed under the copyright laws.

All trademarks and registered trademarks are acknowledged to be the property of their owners.

Total recovery (backup to recovery drive)

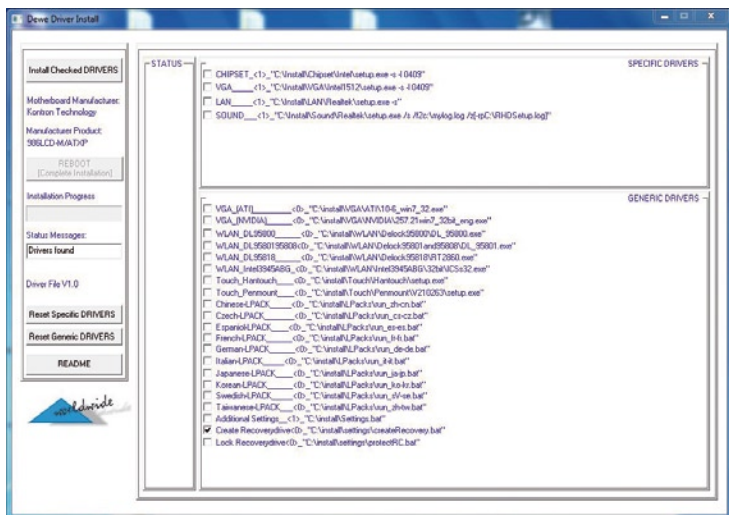


Figure 1: Create recovery drive

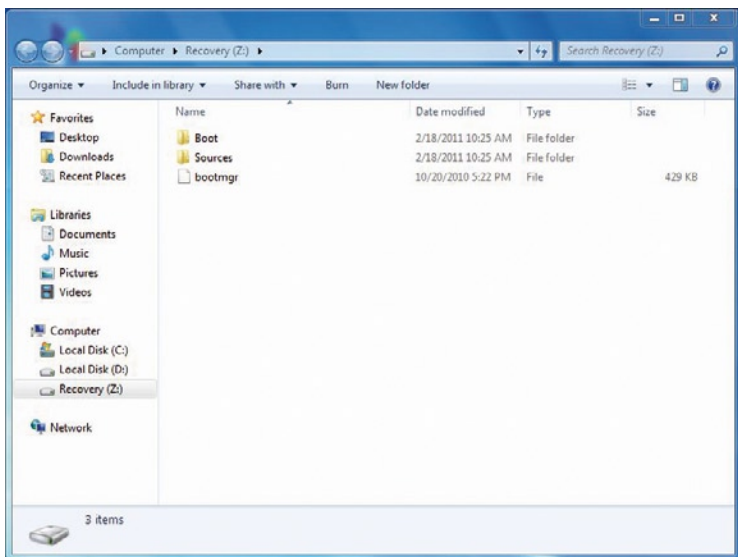


Figure 2: Recovery drive



Figure 3: Main console

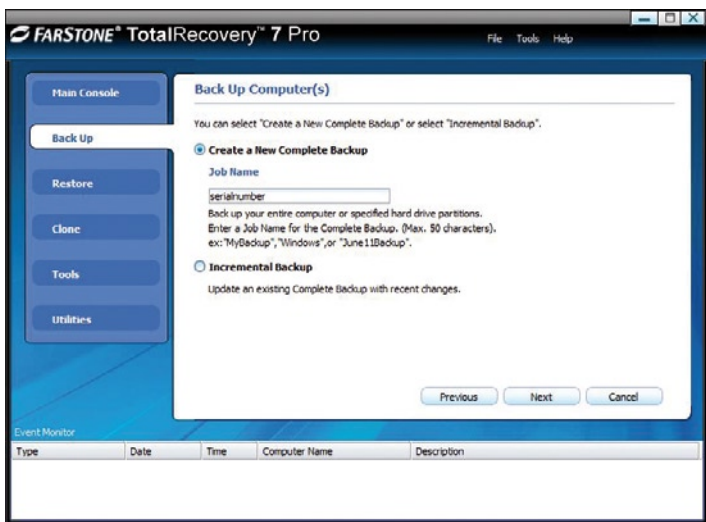


Figure 4: New complete backup

Total recovery (backup to recovery drive)

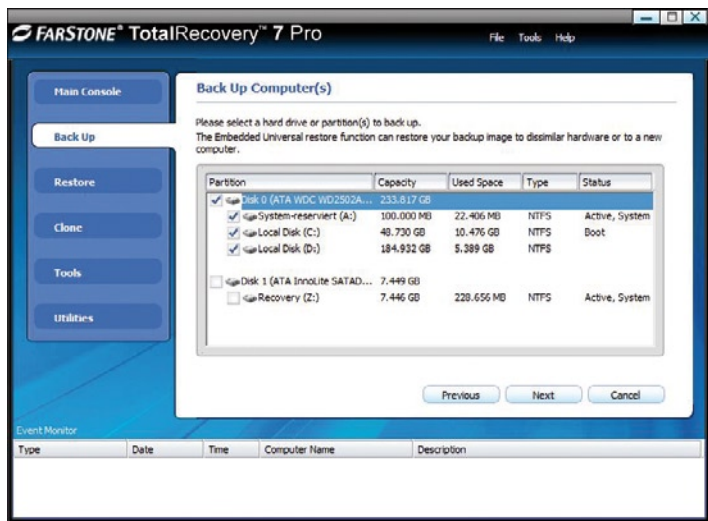


Figure 5: Select source

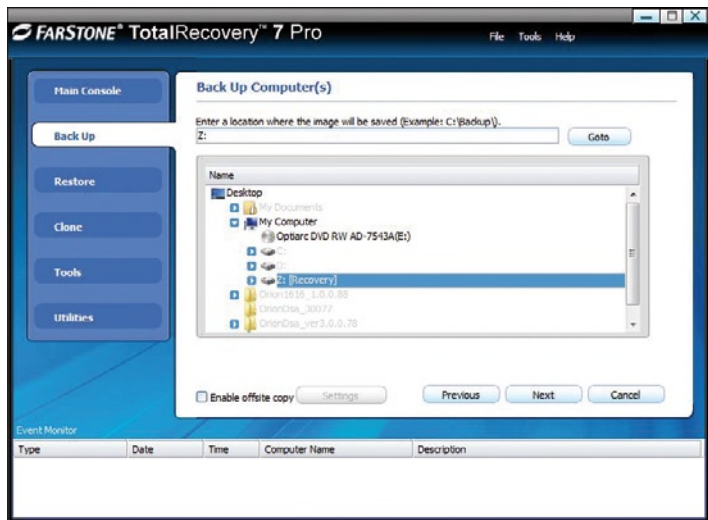


Figure 6: Select location

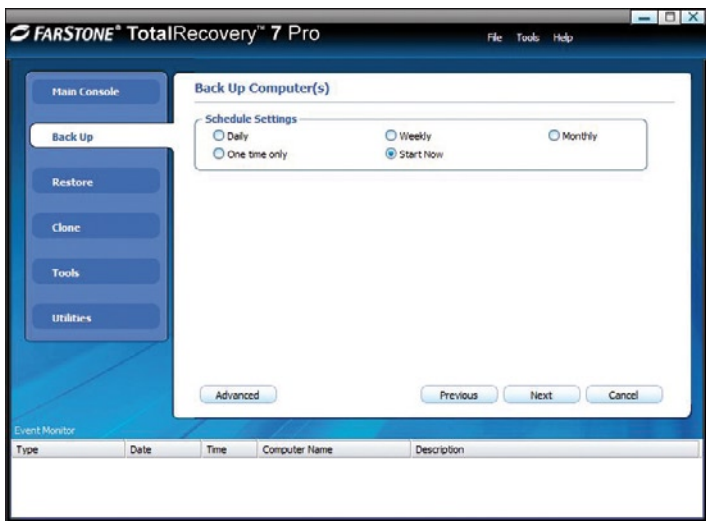


Figure 7: Start back up

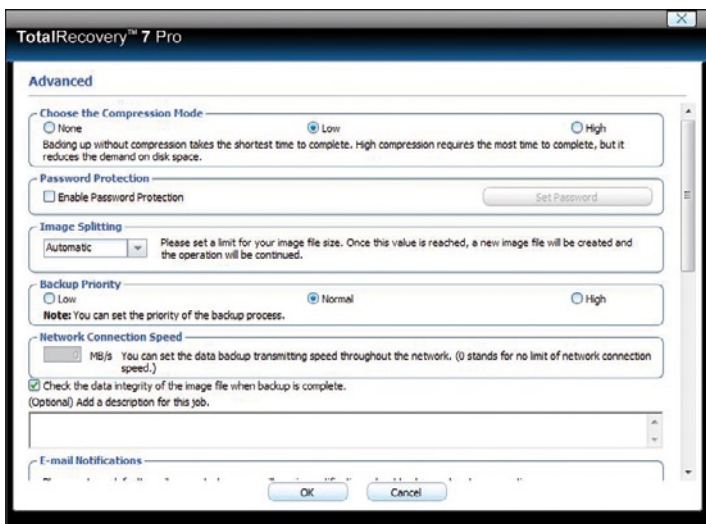


Figure 8: Advanced settings

Enable "Check the data integrity of the image file when backup is complete"

Total recovery (backup to recovery drive)

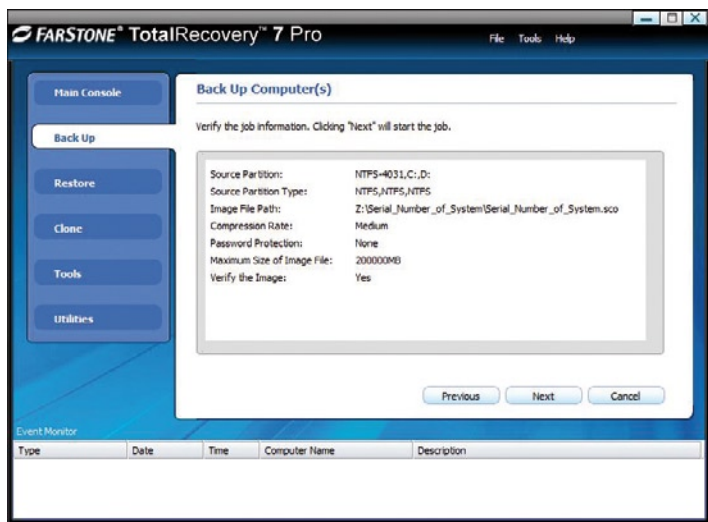


Figure 9: Verifying job information

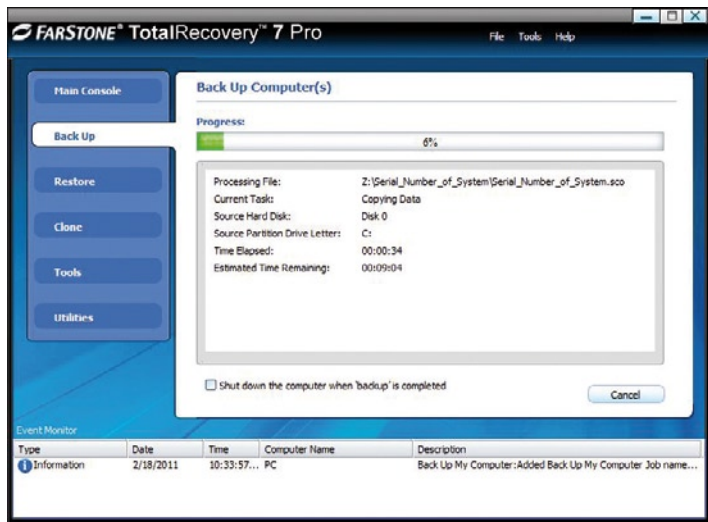


Figure 10: Backup progress

Total recovery (backup to recovery drive)

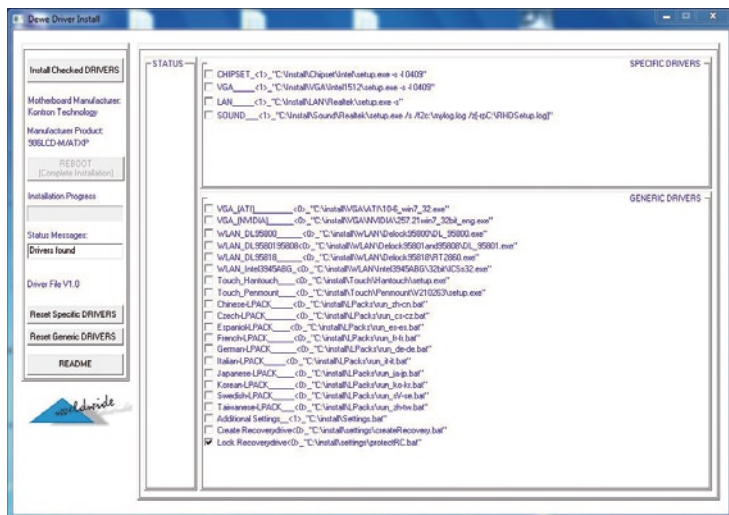


Figure 11: Lock recovery drive

Re-inventing Data Acquisition

DEWETRON Ges.m.b.H. • Parking 4 • A-8074 Graz-Grambach
Tel (0043) 316 3070 0 • Fax (0043) 316 3070 90
sales@dewetron.com • www.dewetron.com

