



Automotive
Energy & Power Analysis
Aerospace & Defense
Transportation
General Test & Measurement

Total recovery (backup to recovery drive)
Software reference manual



Re-inventing Data Acquisition



Copyright © DEWETRON elektronische Messgeraete Ges.m.b.H.

This document contains information which is protected by copyright. All rights are reserved. Reproduction, adaptation, or translation without prior written permission is prohibited, except as allowed under the copyright laws.

All trademarks and registered trademarks are acknowledged to be the property of their owners.

Total recovery (backup to recovery drive)

This guide provides a step-by-step instruction on how to backup your recovery on a DVD.

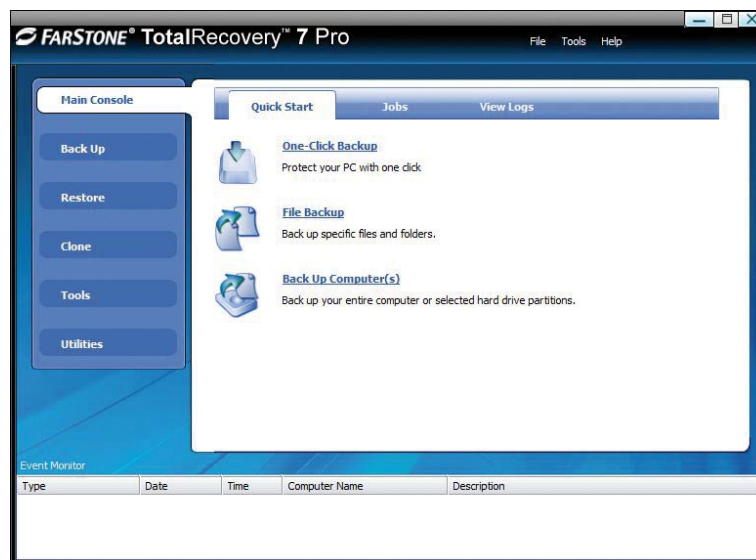


Figure 1: Main console

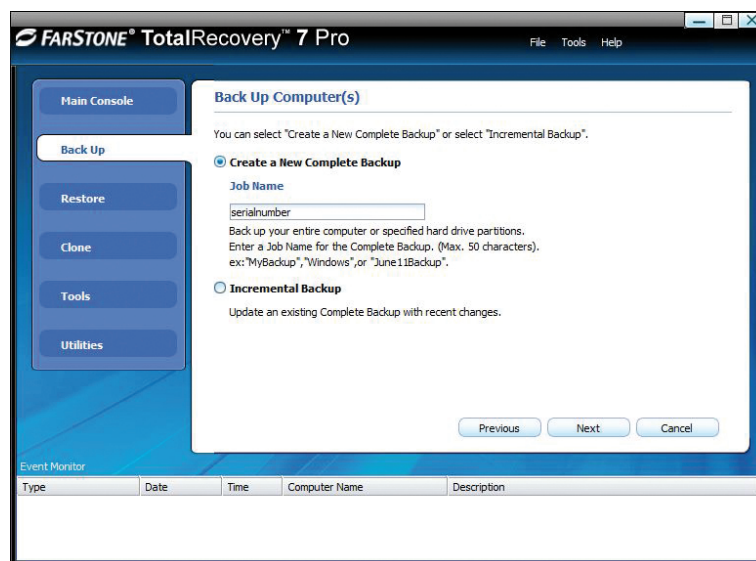


Figure 2: New complete backup

Total recovery (backup to recovery drive)

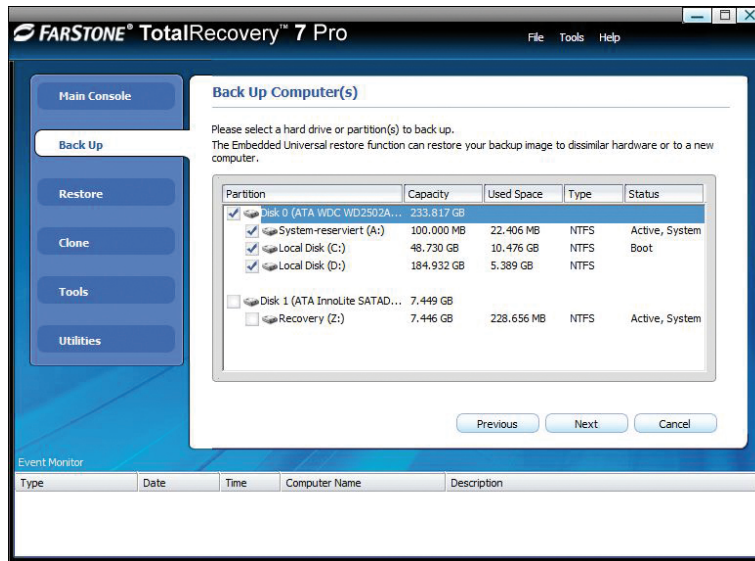


Figure 3: Select source

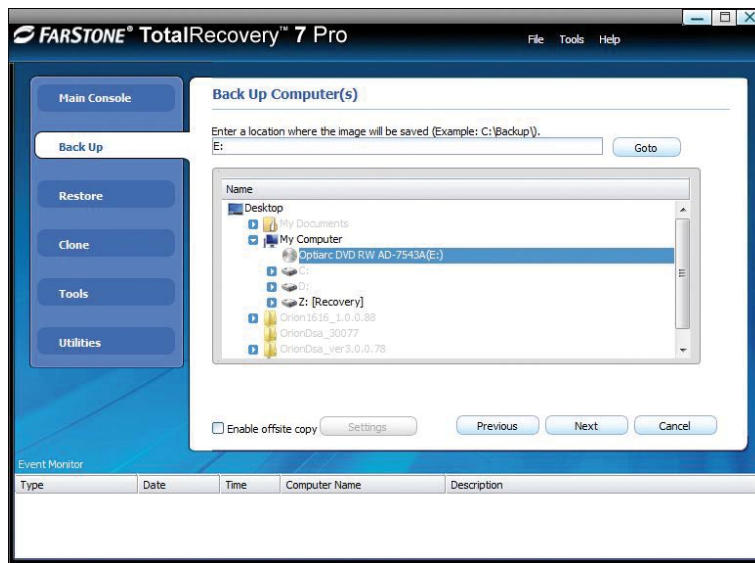


Figure 4: Select location

Place the recovery manager on the media that it's possible to boot from the DVD

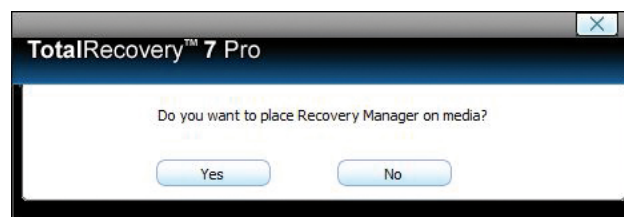


Figure 5: Place recovery manager

Total recovery (backup to recovery drive)

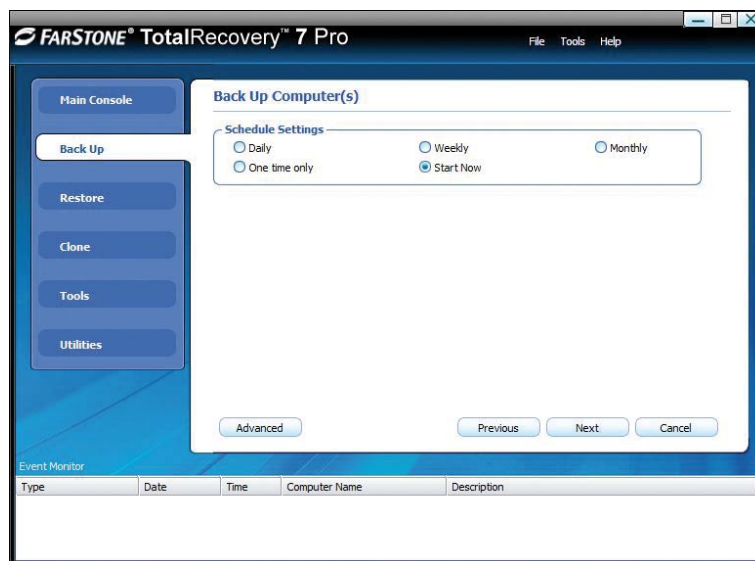


Figure 6: Start back up

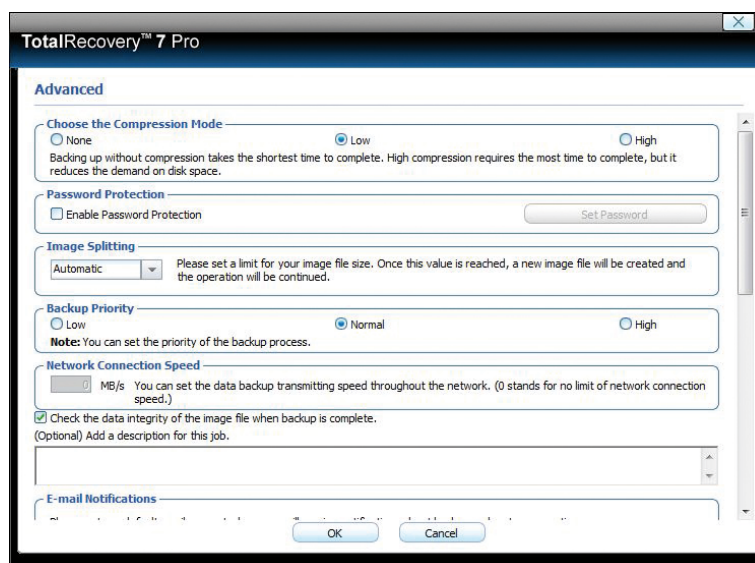


Figure 7: Advanced settings

Note: If the data integrity check is enabled the program checks the DVD after the creation. This might take some extra time to create a DVD (~ 1 hour).

Total recovery (backup to recovery drive)

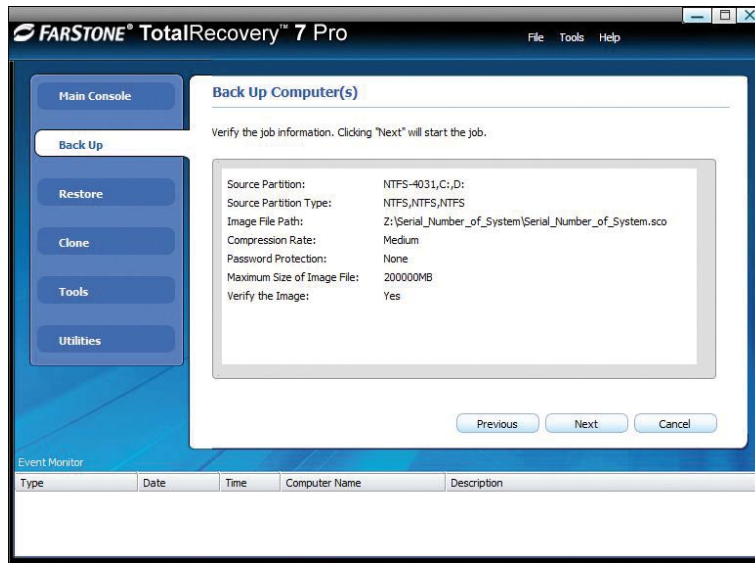


Figure 8: Verifying job information

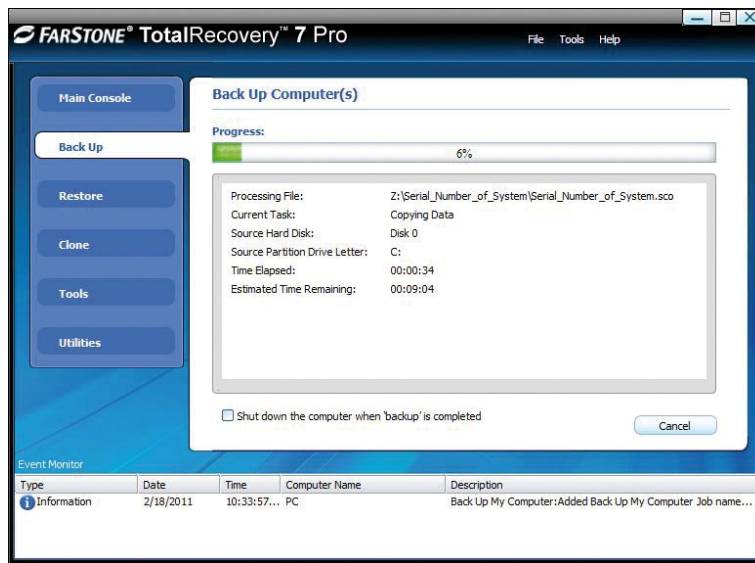


Figure 9: backup progress