



Automotive
Energy & Power Analysis
Aerospace & Defense
Transportation
General Test & Measurement

Total recovery (SATADOM)

Software reference manual



Re-inventing Data Acquisition



Copyright © DEWETRON elektronische Messgeraete Ges.m.b.H.

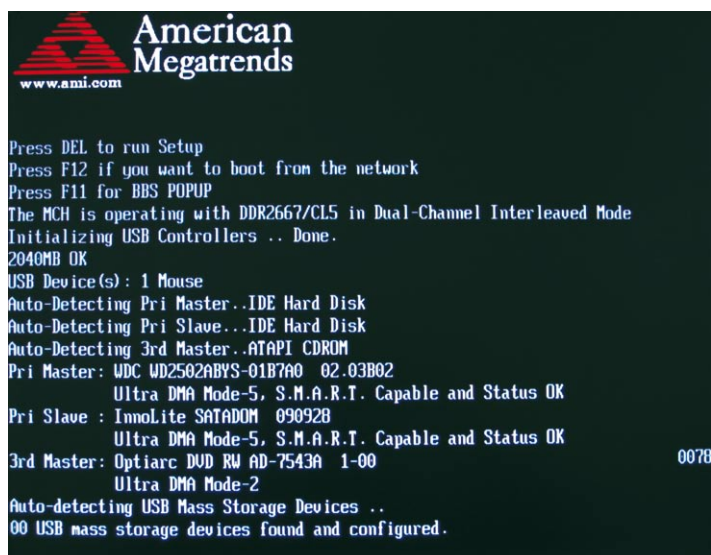
This document contains information which is protected by copyright. All rights are reserved. Reproduction, adaptation, or translation without prior written permission is prohibited, except as allowed under the copyright laws.

All trademarks and registered trademarks are acknowledged to be the property of their owners.

Total recovery (SATADOM)

In this software reference manual you will find a step-by-step instruction on how to recover your system with the built-in recovery drive of your DEWE-500x, DEWE-260x, DEWE-80x, DEWE-51x, DEWE-1201, DEWE-211, DEWE-400x.

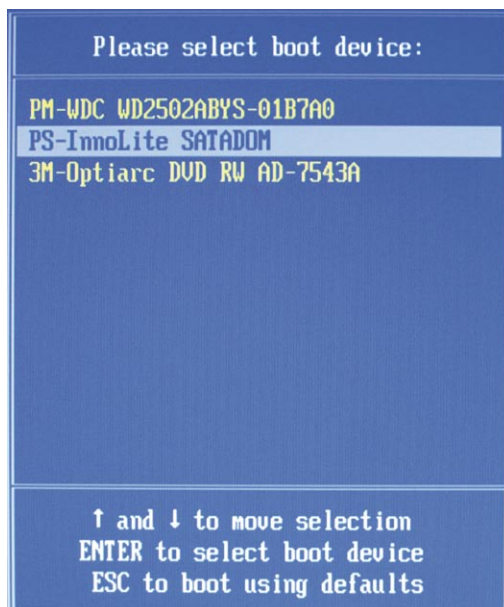
1.) Power on your system and press "F11" to enter the boot selection screen.



```
www.ami.com
American
Megatrends

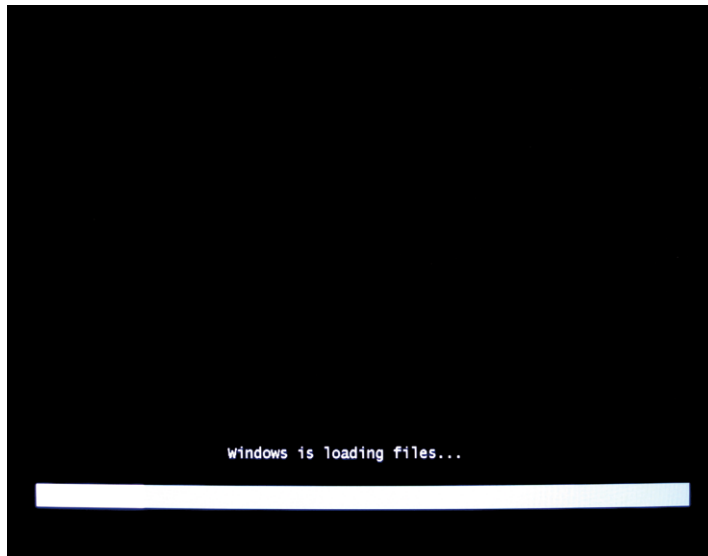
Press DEL to run Setup
Press F12 if you want to boot from the network
Press F11 for BBS POPUP
The MCH is operating with DDR2667/CL5 in Dual-Channel Interleaved Mode
Initializing USB Controllers .. Done.
2040MB OK
USB Device(s): 1 Mouse
Auto-Detecting Pri Master..IDE Hard Disk
Auto-Detecting Pri Slave..IDE Hard Disk
Auto-Detecting 3rd Master..ATAPI CDROM
Pri Master: WDC WD2502ABYS-01B7A0 02.03B02
Ultra DMA Mode-5, S.M.A.R.T. Capable and Status OK
Pri Slave : InnoLite SATADOM 09092B
Ultra DMA Mode-5, S.M.A.R.T. Capable and Status OK
3rd Master: Optiarc DVD RW AD-7543A 1-00
Ultra DMA Mode-2
Auto-detecting USB Mass Storage Devices ..
00 USB mass storage devices found and configured.
```

2.) Choose SATADOM and press "Enter"

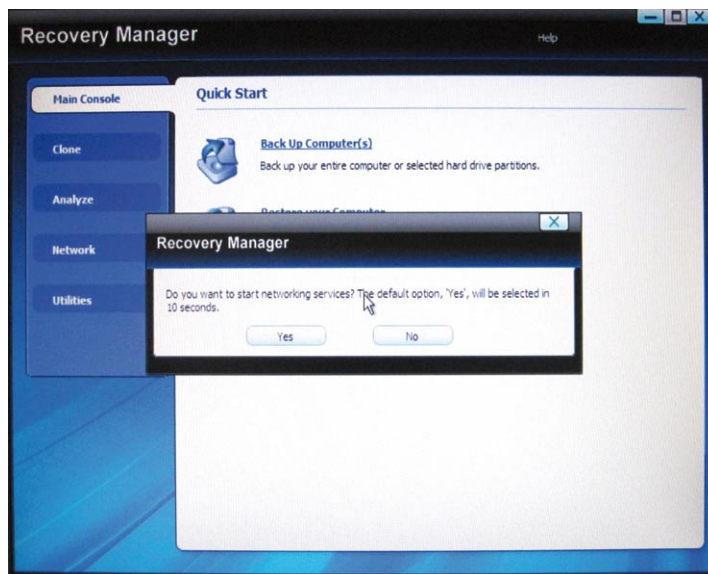


Total recovery (SATADOM)

3.) The system would start now Windows PE and the Total recovery program.

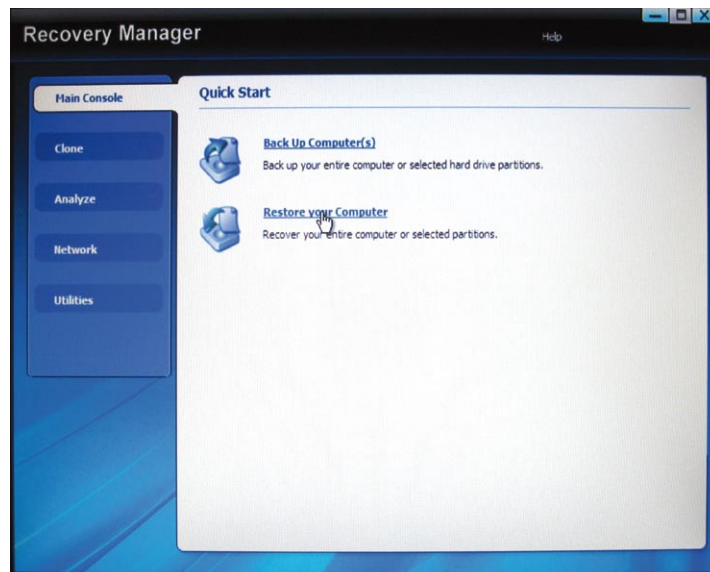


4.) Choose "no" for the network services

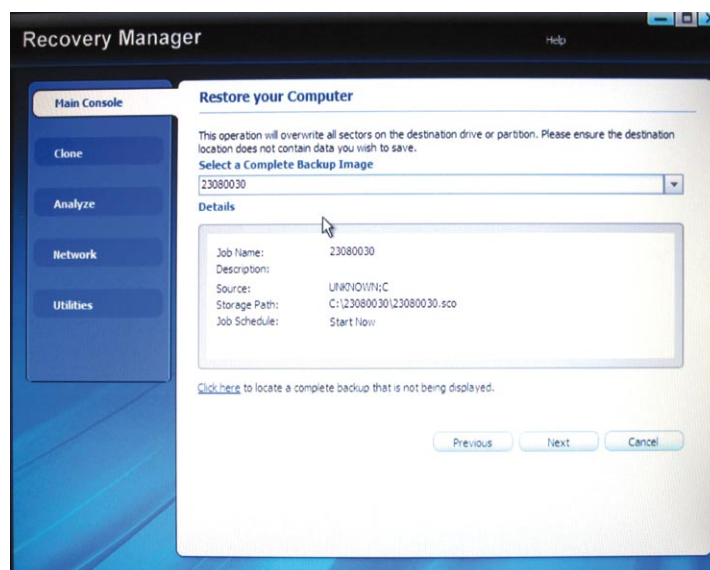


Total recovery (SATADOM)

5.) Choose "restore your computer" to start the restore process.

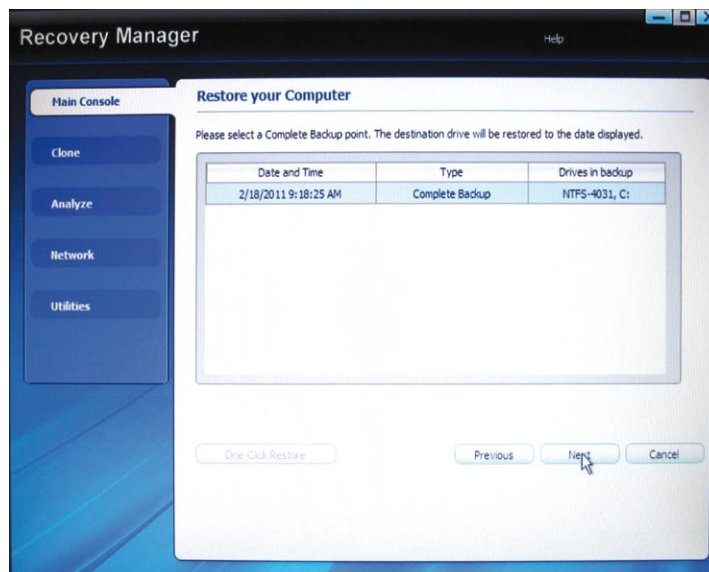


6.) The system would automatically find the recovery image. Press "next" to proceed.

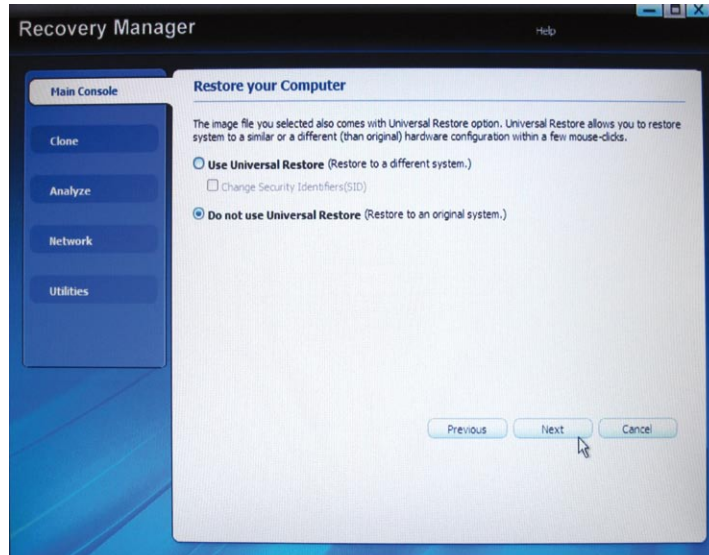


Total recovery (SATADOM)

7.) You would get additional information about the recovery image, press "next".

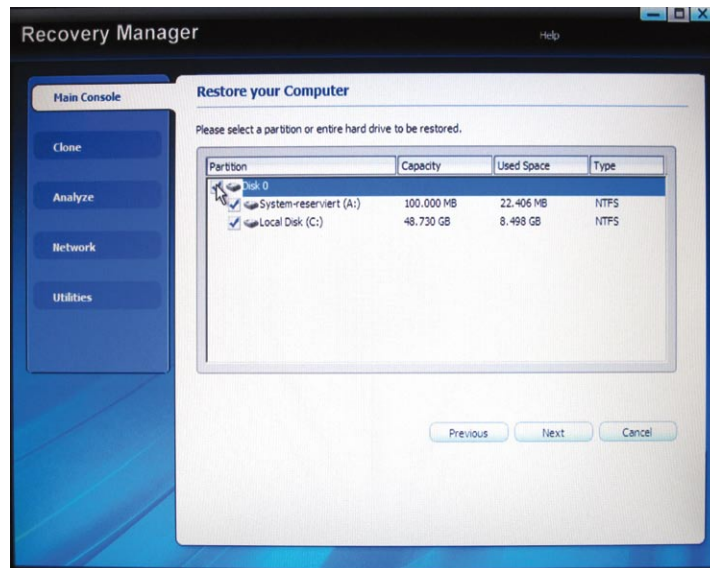


8.) Choose "Do not use universal restore" (Restore to an original system) and press "next".

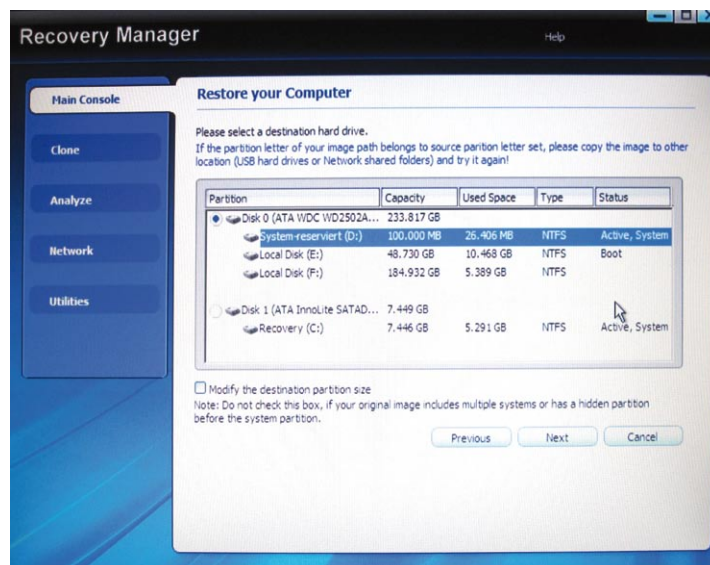


Total recovery (SATADOM)

9.) Select the drive which you want to restore from the image file (complete disk).

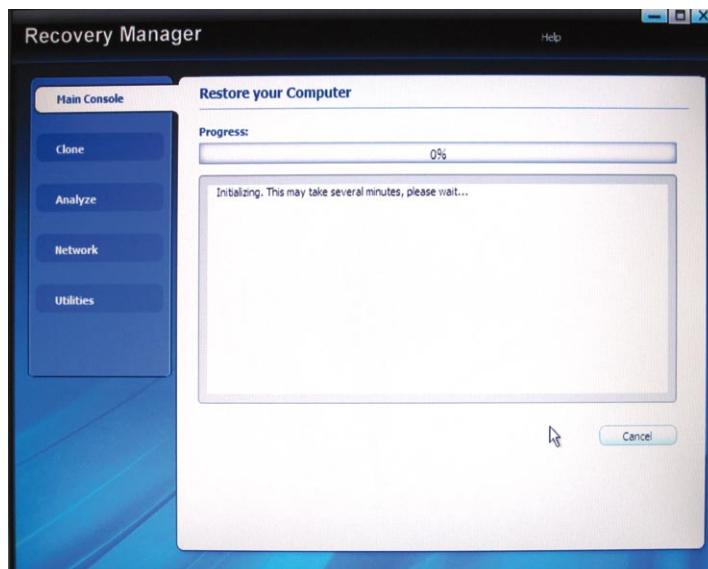
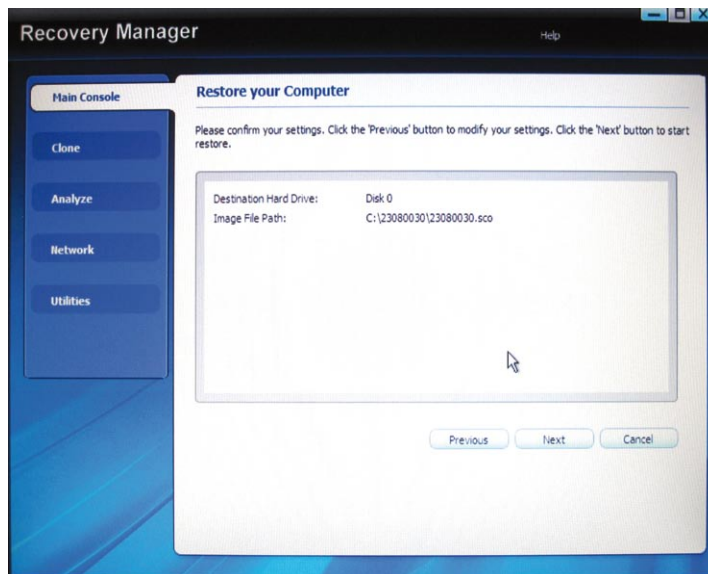


10.) Select the drive where the data from the image should be placed (complete disk).



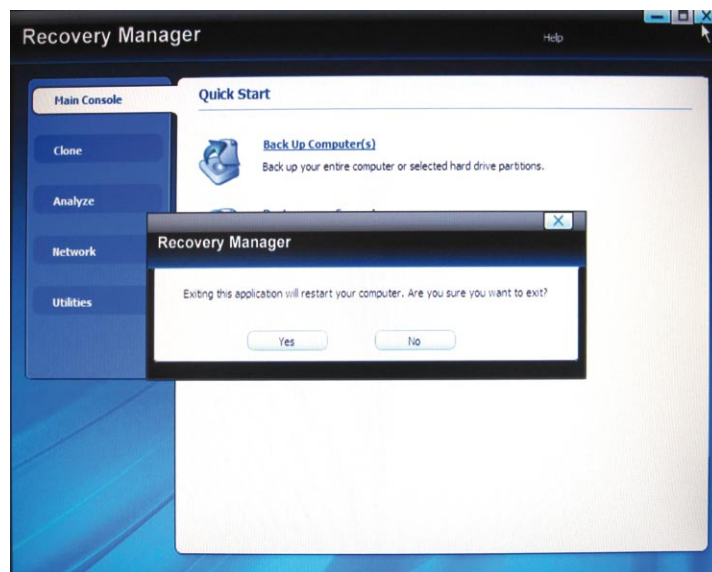
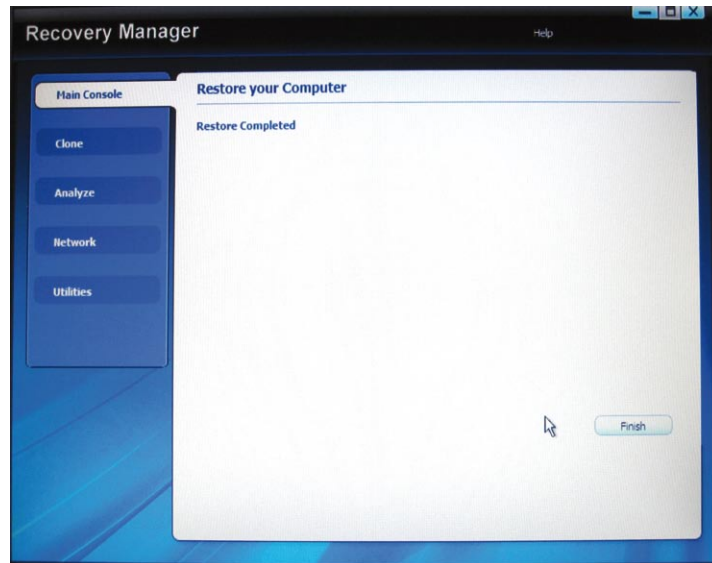
Total recovery (SATADOM)

11.) Press "next" to start the restoring process.



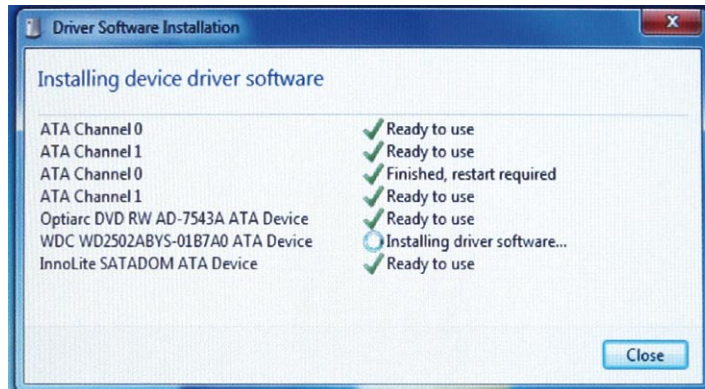
Total recovery (SATADOM)

12.) After the restoring has been finished press "finish" and close the program.

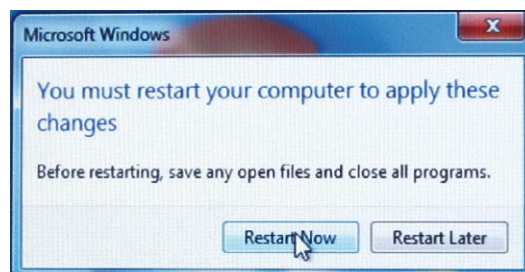


Total recovery (SATADOM)

13.) After Windows is started again it will find all drives again and reallocate the drive letters.



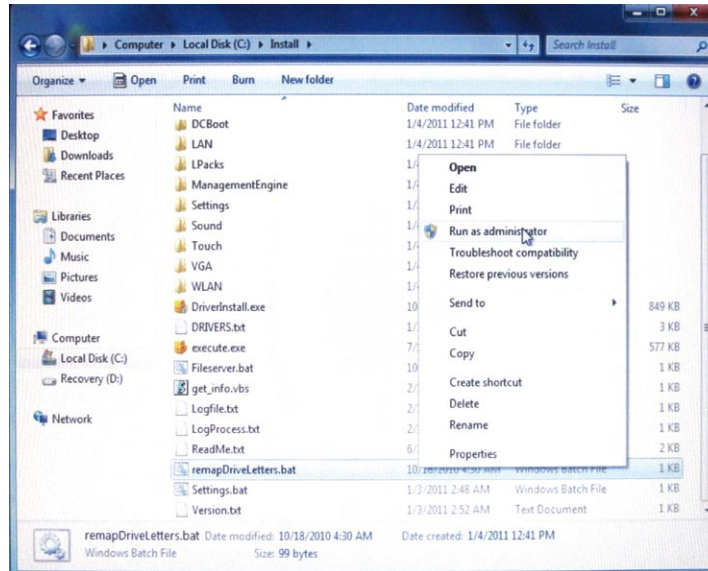
It would also force you to restart the system to complete. Restart windows.



Total recovery (SATADOM)

The drive letters might be wrong now (D:\ might be now E:\) and need to be remapped for DEWESoft to work.

14.) To remap the drive letters navigate to the C:\Install\ folder and start remapdriveletters.bat as administrator (right click the file and select "Run as administrator").



Now the system is restored and all drive letters are remapped.

The system is now set back to original state.

Total recovery (SATADOM)
