

THE MEASURABLE DIFFERENCE.



DEWETRON

# OXYGEN TRAINING > DATA EXPORT



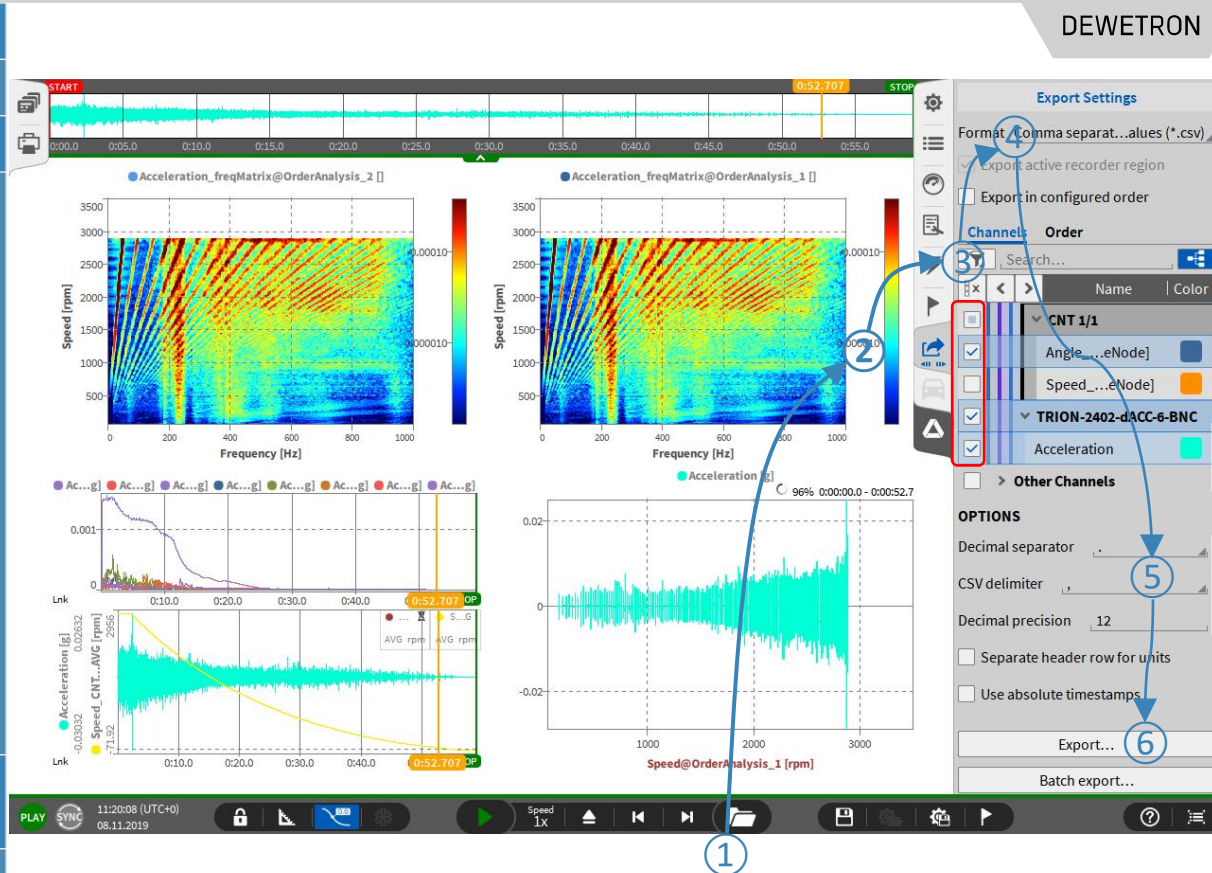


DEWETRON

© DEWETRON GmbH | November 25

# How to export data

- ① Open a data file
- ② Go to the Export menu
- ③ Select the channels to be exported
- ④ Select the export file format:
  - \*.txt,
  - \*.csv
  - \*.mdf4.0/4.1
  - \*.mat
  - \*.xlsx
  - \*.rsp (rpc III)
  - \*.wav
  - \*.dat (DIADDEM)
  - \*.hdf5
  - \*.nt (DynaWorks)
  - \*.uff (uff58 - Binary and ASCII)
  - \*.tdms
  - \*.imc2 (FAMOS)
  - \*.nc (NetCDF)
  - \*.datx-Format (DSPCon)
- ⑤ Choose between different file format dependent options
- ⑥ Press the export button to specify a filename and folder



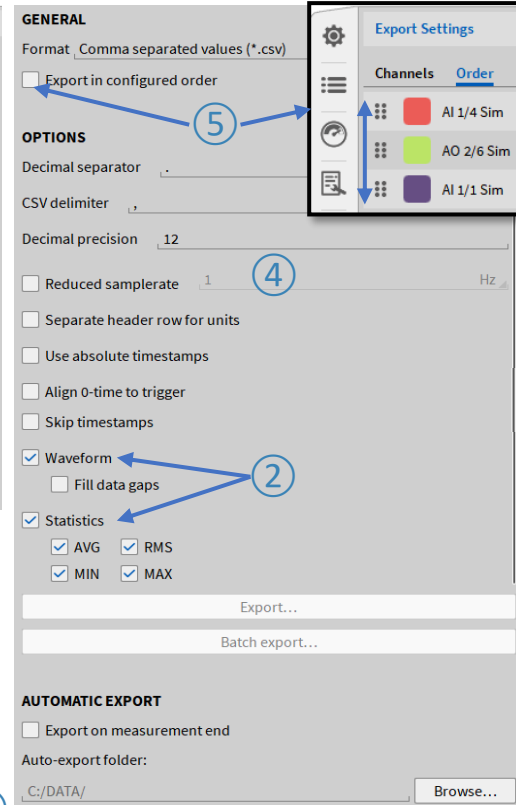
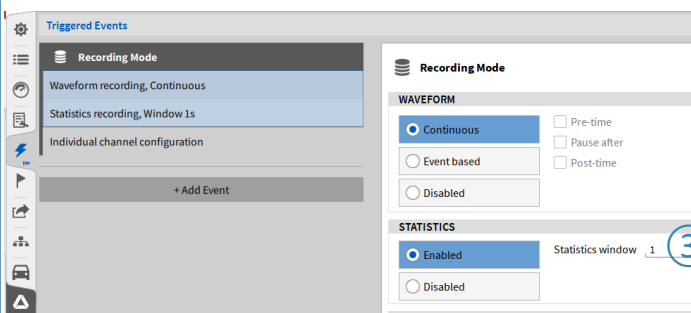
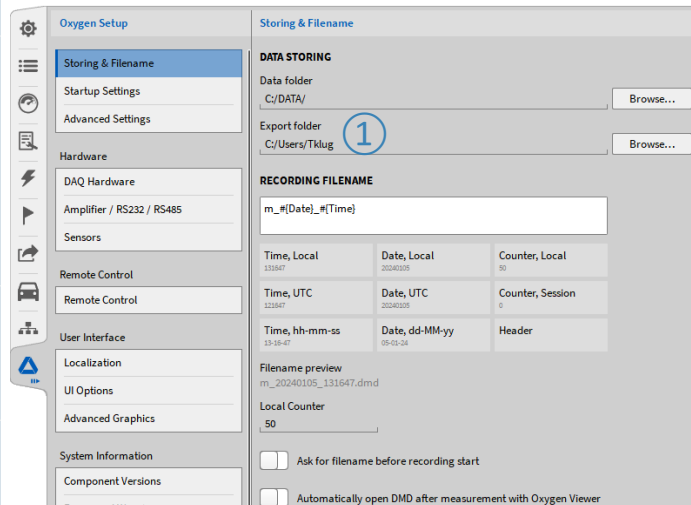


DEWETRON

© DEWETRON GmbH | November 25

# EXPORT OPTIONS

- 1 Default Export folder can be specified in *System Settings* → *Measurement Setup*
- 2 Waveform exports data of selected channels at full sample rate  
Statistics only exports min/max/avg/rms values of each selected channel for a defined window time if activated in Trigger menu (3)
- 4 To export the selected channels with a reduced sample rate. By default this can be chosen between 1 Hz and 10 kHz.
- 5 If a changed channel order is required, the channels can be rearranged in the order tab next to the channels tab





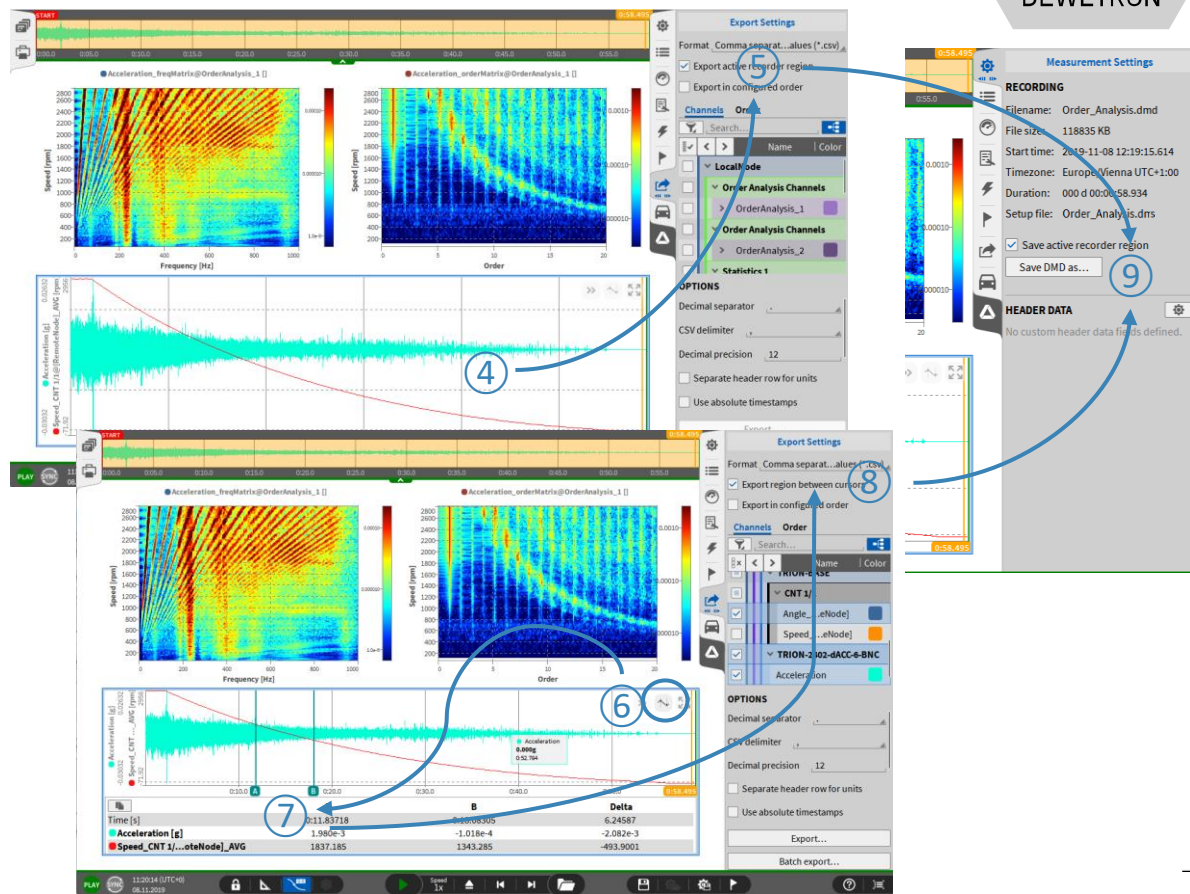


DEWETRON

© DEWETRON GmbH | November 25

# EXPORT OPTIONS

- ④ If a Recorder is selected during export, the selected signals can be exported only for the timespan displayed in the Recorder
- ⑤ *Export active recorder region* must be selected herefor
- ⑥ Cursors can be activated as well
- ⑦ If cursors are activated in the Recorder, the data of the selected signals can be exported only for the timespan between the cursors
- ⑧ *Export region between cursors* must be selected herefor
- ⑨ The dmd export can be used in combination with one of these two possibilities to decrease the file size of dmd files.  
**Dmd export supports no channel selection but exports all available channels**



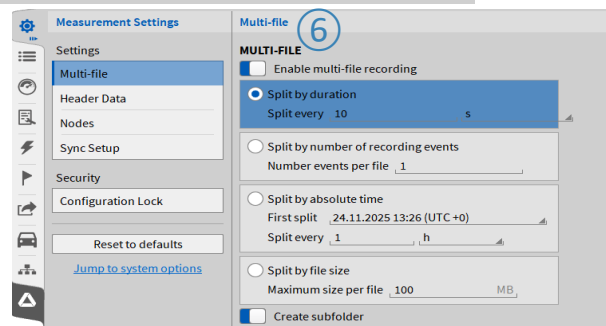
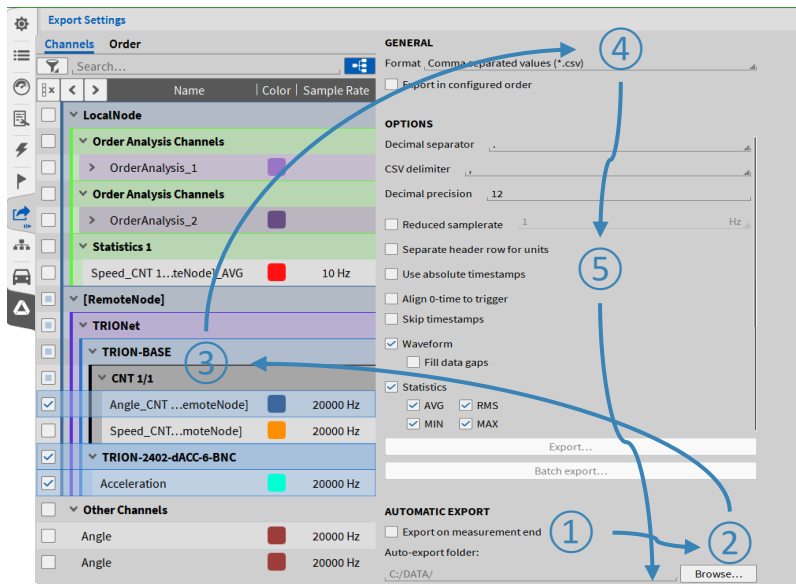


DEWETRON

© DEWETRON GmbH | November 25

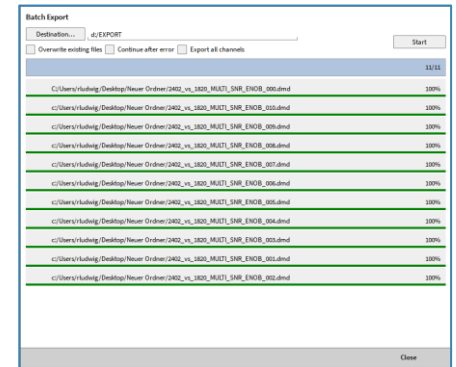
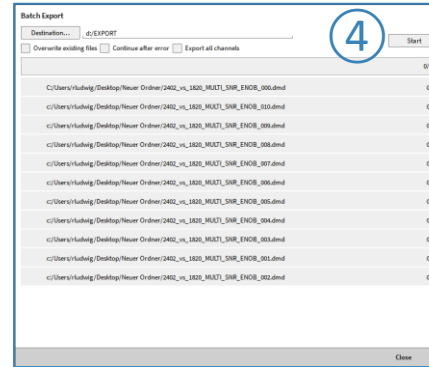
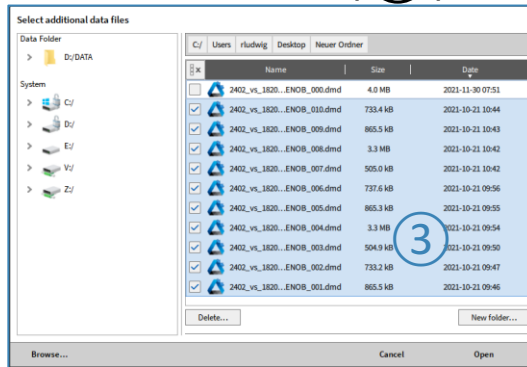
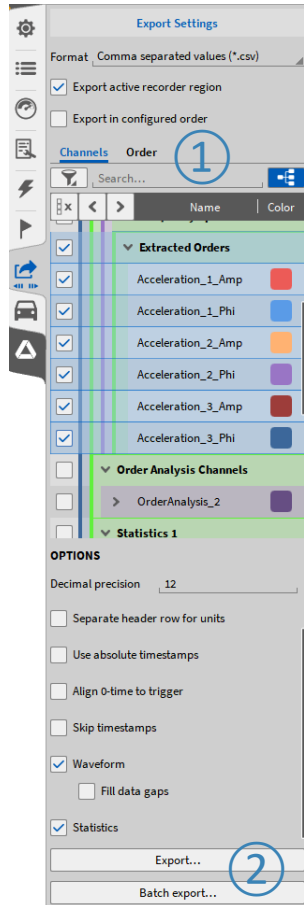
# AUTOMATIC EXPORT

- 1 The Export menu can also be accessed in Live mode during setup generation to activate the option to automatically *Export the data after measurement end*
- 2 A separate export folder can be specified
- 3 Individual channels for export can be selected
- 4 Export format can be specified
- 5 Format dependent options are available
- 6 In case of Multi-File recording, data since recording start will be exported to one single file but not be split up in individual files



# BATCH EXPORT

- > Possibility to export data of several \*.dmd-files successively
- > How to...
  - > Load one file and set the export options (①)
  - > Press Batch Export (②)
  - > Select additional \*.dmd-files (③)
  - > Press Start (④)



# BATCH EXPORT

- > Requirements: Selected channels (Channel Names) need to be included in all \*.dmd-files
  - > Good to know:
    - > Possibility to export all channels (⑤)
      - Batch export with files including different channel names
    - > Data export from Rec start to end
      - Active Recorder / Cursor region will be ignored
    - > Batch export stops when error occurs
- Errors might be:
- > Channel not found
  - > File not accessible
  - > Export file already exists - can be overwritten automatically (⑥)
  - > Possibility to continue after error (⑦)

